

ENCO Lathe

GEAR HEAD

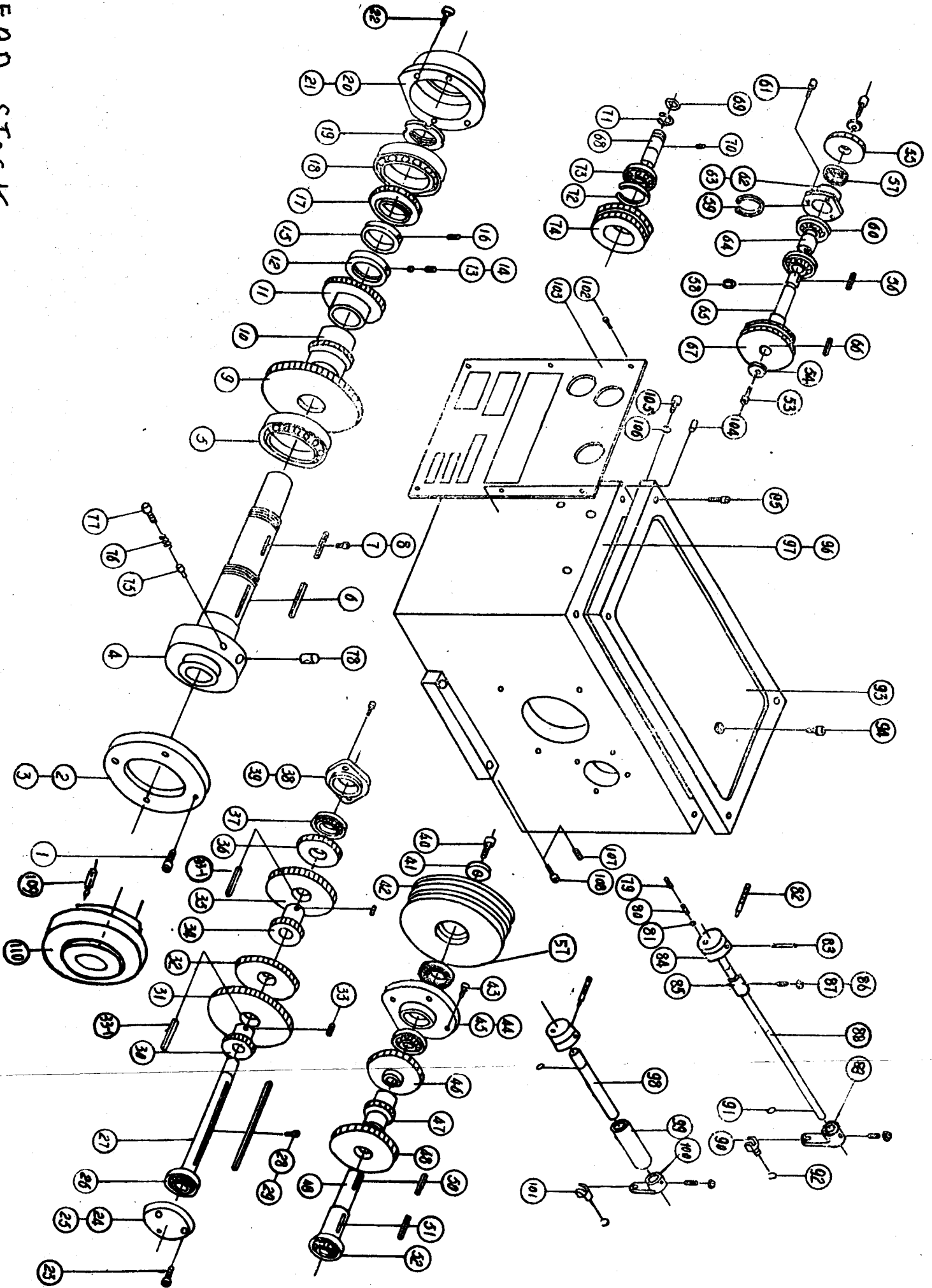
GAP BED

110-1351

SWING OVER BED 13 X 40 inch Distance Between Centers

PARTS LIST

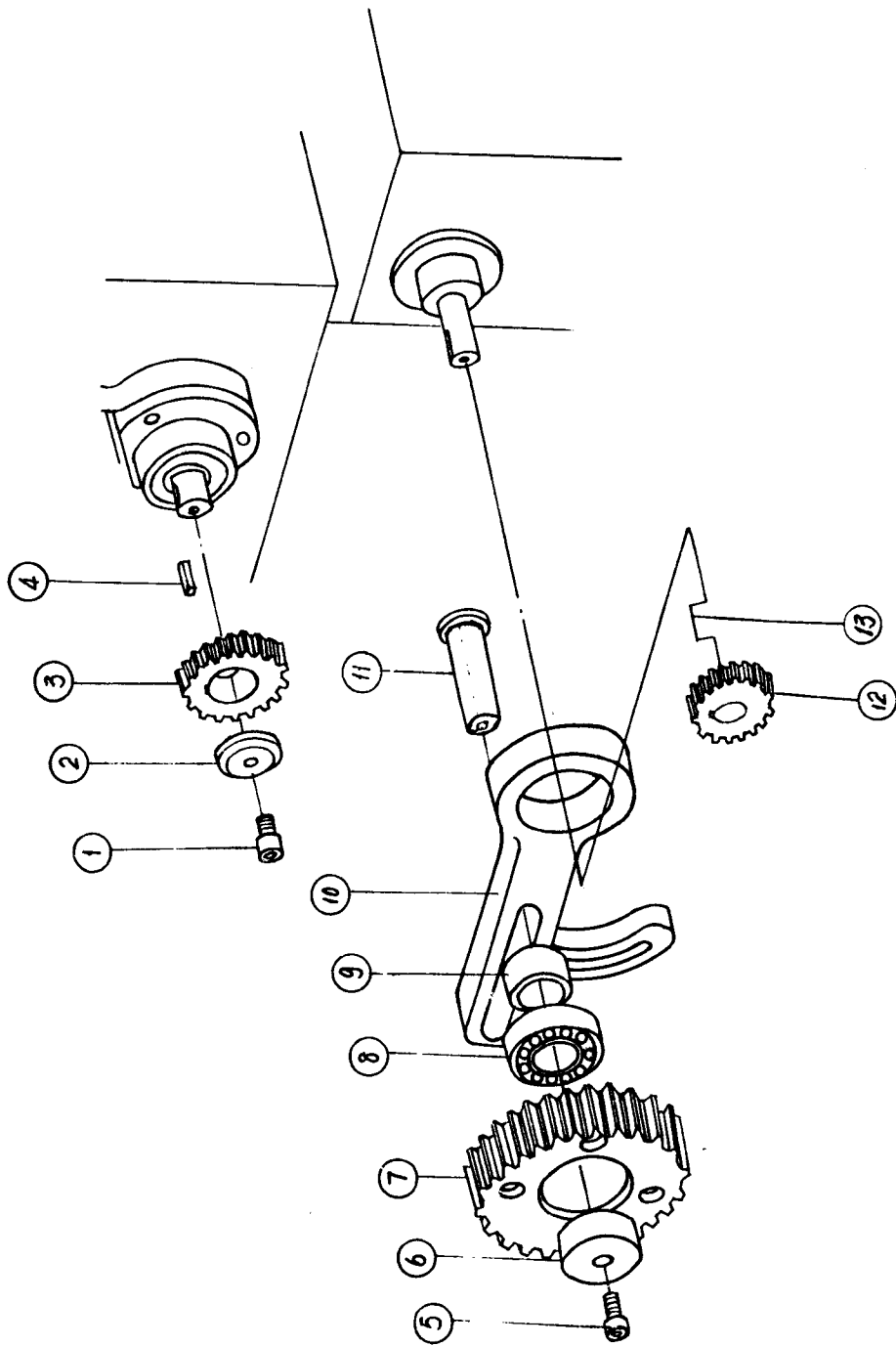
HEAD STOCK	1
CHANGE GEAR	4
GEAR BOX.....	6
APRON	8
SADDLE	10
TOOL POST	12
TAIL STOCK.....	14
BED AND DRIVE ASSEMBLY	16
CONTROL SWITCH ASSEMBLY.....	18
BED ASSEMBLY	20



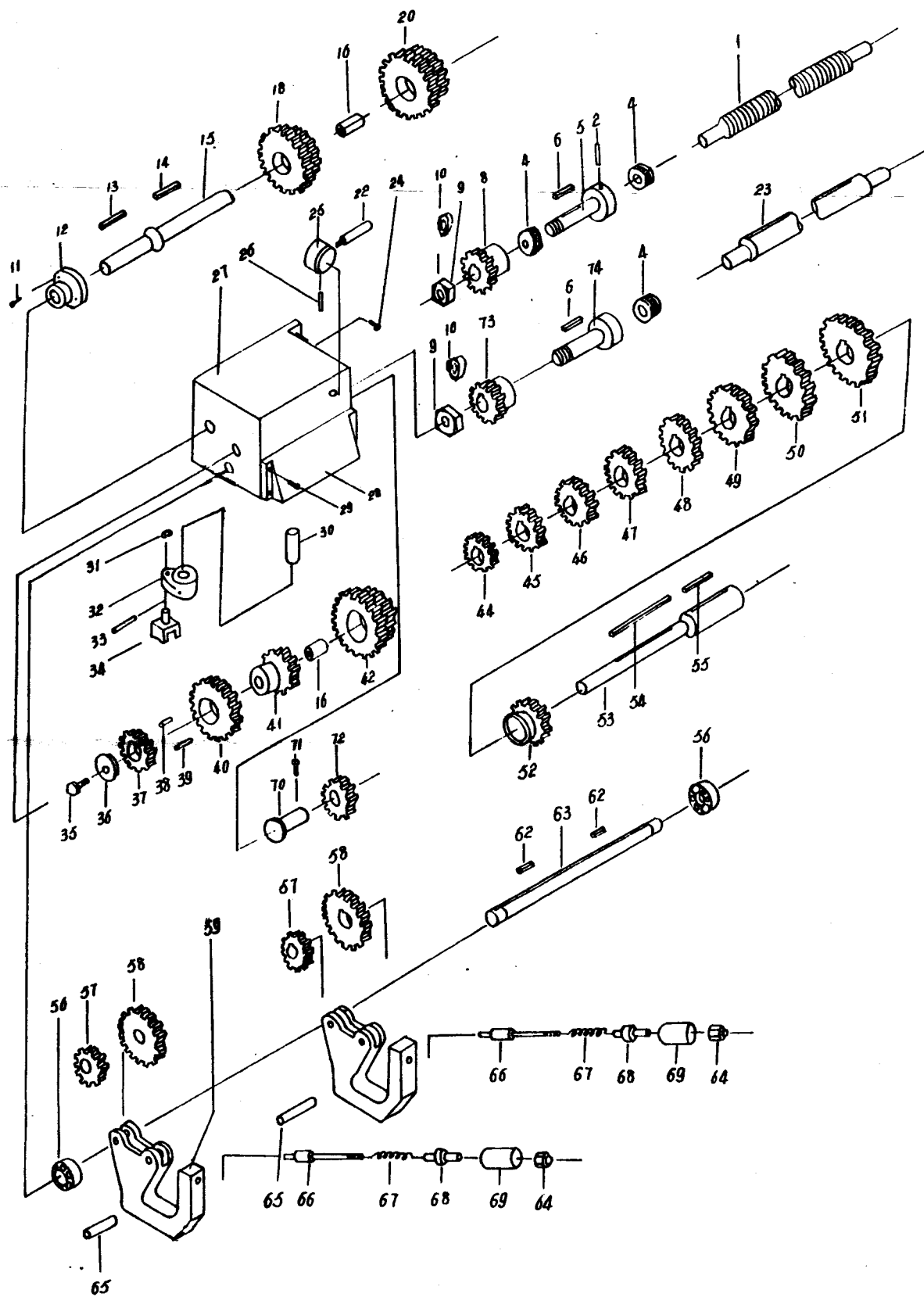
No.	DESCRIP- TION	Q'TY	PART NO.	Specific- ation	No.	DESCRIP- TION	Q'TY	PART NO.	Specific- ation
1	Screw	4		M8 × 25	36	Gear	1	1019	
2	Cover	1	1037		37	Bearing	1		60104
3	Oil Seal	1		$\delta=0.5\text{mm}$	38	Oil Seal	1		$\delta=0.5\text{mm}$
4	Spindle	1	1036		39	Cover	1	1007	
5	Bearing	1		7212	40	Screw	1		M8 × 20
6	Key	1		8 × 82	41	Washer	1	1009	
7	Key	1		8 × 45	42	Pulley	1	1012	
8	Screw	2		M3 × 8	43	Screw	4		M6 × 12
9	Gear	1	1030		44	Cover	1	1010	
10	Gear	1	1029		45	Oil Seal	1		$\delta=0.5\text{mm}$
11	Gear	1	1028		46	Gear	1	1011	
12	Nut	1	1022		47	Gear	1	1016	
13	Washer	2	1023		48	Gear	1	1017	
14	Screw	2		M8 × 8	49	Shaft	1	1008	
15	Collar	1	1021		50	Key	1		5 × 30
16	Screw	1		M8 × 8	51	Key	1		5 × 80
17	Gear	1	1006		52	Bearing	1		104
18	Bearing	1		7211	53	Screw	2		M6 × 12
19	Nut	2	1005		54	Washer	2	1024	
20	Oil Seal	1		$\delta=0.5\text{mm}$	55	Gear	2	1002	
21	Cover	1	1004		56	Key	1		5 × 8
22	Screw	4		M8 × 16	57	Oil Seal	1		PD20 × 45
23	Screw	5		M6 × 16			2		× 10
24	Cover	1	1039		58	Circlip			20
25	Oil Seal	1		$\delta=0.5\text{mm}$	59	Circlip	1		42
26	Bearing	1		60304	60	Bearing	1		104
27	Shaft	1	1038		61	Screw	2		M6 × 16
28	Key	1		8 × 180	62	Oil Seal	3		$\delta=0.5\text{mm}$
29	Screw	2		M3 × 8	63	Cover	1	1003	
30	Gear	1	1015		64	Collar	1	1027	
31	Gear	1	1013		65	Shaft	1	1026	
32	Gear	1	1014		66	Key	1		5 × 20
33	Screw	4		M5 × 6	67	Gear	1	1025	
33-1	Key	2		5 × 20	68	Shaft	1	1001	
34	Gear	1	1020		69	Oil Seal	1		22 × 2.4
35	Gear	1	1018		70	Screw	1		M8 × 6

No.	DESCRIP- TION	Q'TY	PART NO.	Specific- ation	No.	DESCRIP- TION	Q'TY	PART NO.	Specific- ation
71	Circlip	1		20	93	Cover	1	1042	
72	Circlip	2		47	94	Screw	1	1043	
73	Bearing	1		204	95	Screw	6		M6×25
74	Gear	1	1031		96	Oil Seal	1		$\delta = 0.5\text{mm}$
75	Lock Pin	3	1033		97	Headstock	1	1032	
76	Spring	3	1034		98	Shaft	1	1049	
77	Screw	3		M8×16	99	Collar	1	1050	
78	Eccentric Shaft	3	1035		100	Shifter Arm	1	1051	
79	Screw	6		M8×8	101	Shifter	1	1052	
80	Spring	6	1048		102	Rivet	6		2×6
81	Ball	6		Φ6	103	Signboard	1	1054	
82	Handle	3	1046		104	Oil Window	1		12A
83	Pin	3		5×40	105	Screw	1	1053	
84	Boss	3	1047		106	Oil Seal	1		14×2.4
85	Collar	1	1045		107	Screw	2		M8×30
86	Nut	6		M8	108	Screw	2		M8×35
87	Screw	6		M8×12	109	Rod	9	F3004	
88	Shaft	2	1044		110-1	Face Plate	1	F3001	
89	Shifter Arm	2	1041		110-2	Flange For 3-jaw Chuck	1	F3002	
90	Shifter	2	1040		110-3	Flange For 4-jaw Chuck	1	F3003	
91	Oil Seal	5		16×2.4					
92	Circlip	3		12					

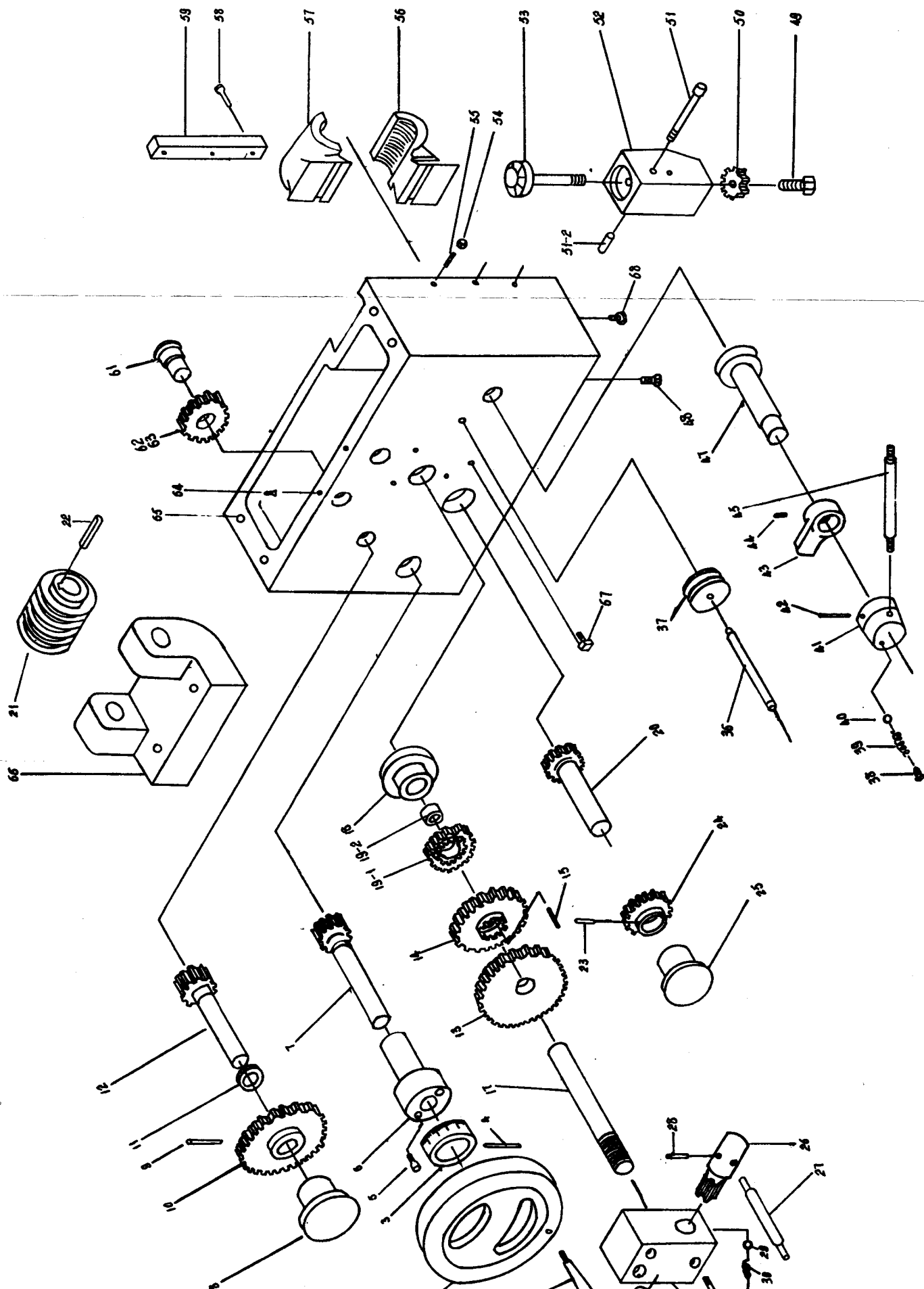
CHANGE GEAR



No.	DESCRIPTION	Q'TY	PART No.	Specification
1	Screw	1		M6 × 12
2	Washer	1	2007	
3	Gear	1	1002	
4	Key	1		5 × 8
5	Screw	1		M6 × 12
6	Washer	1	2004	
7	Gear	1	2013	
8	Bearing	1		80202
9	Collar	1	2005	
10	Quadrant	1	2016	
11	Shaft	1	2006	
12	Gear	1	2015	
13	Key	1		A5 × 23

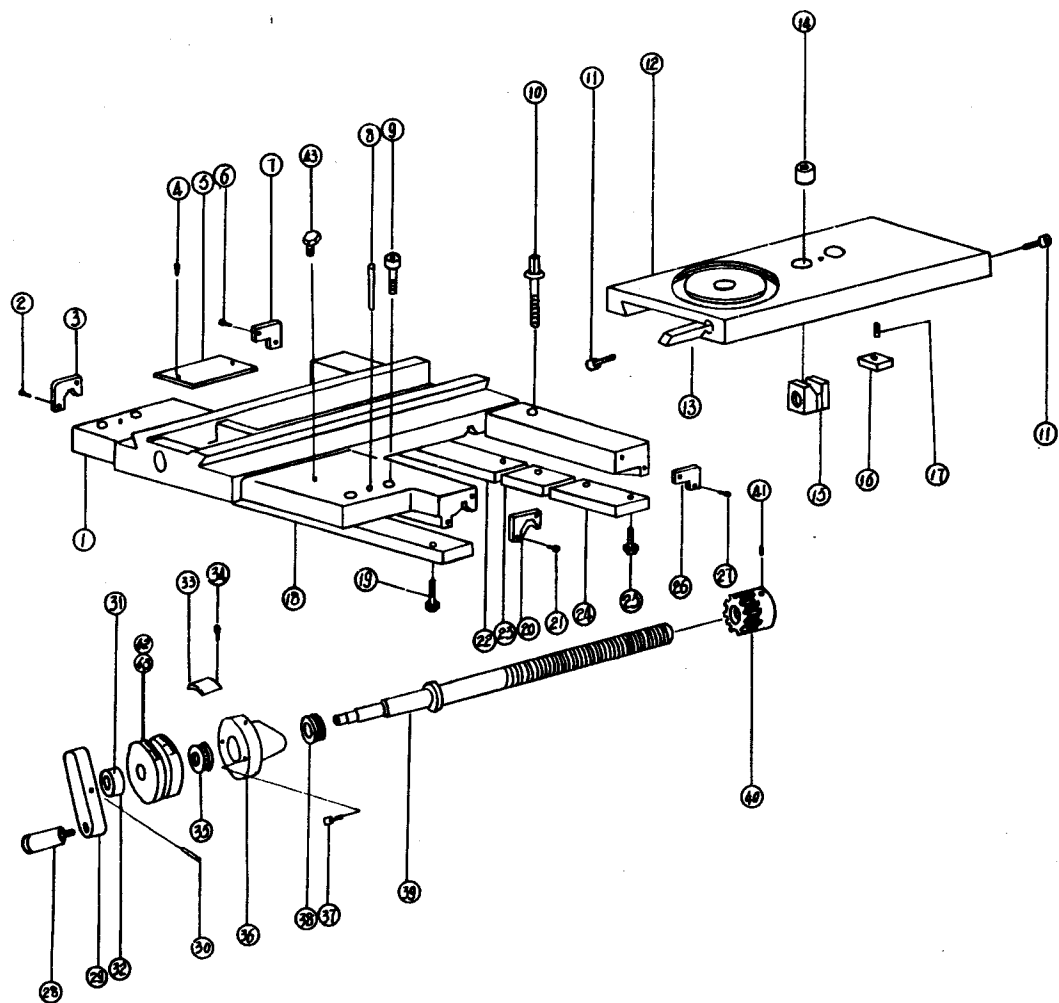


No.	DESCRIP- TION	Q'TY	PART NO.	Specific- ation	No.	DESCRIP- TION	Q'TY	PART NO.	Specific- ation
1	Lead Screw	1	7008		38	Pin	1		3 × 3
2	Pin	2		5 × 35	39	Pin	1		3 × 3
4	Bearing	3		8103	40	Gear	1	3021	
5	Shaft	1	3037		41	Gear	1	3022	
6	Key	2		A5 × 15	42	Gear	2	3020-1	
8	Gear	1	3044-1		44	Gear	1	3029	
9	Nut	4		M12	45	Gear	1	3030	
10	Washer	2	3046		46	Gear	1	3031	
11	Screw	3		M6 × 16	47	Gear	1	3032	
12	Cover	1	3025		48	Gear	1	3033	
13	Key	1		A5 × 23	49	Gear	1	3034	
14	Key	1		C5 × 9	50	Gear	1	3035	
15	Shaft	1	3027		51	Gear	1	3036	
16	Bushing	2	3020-2		52	Gear	1	3040	
18	Gear	1	3026		53	Shaft	1	3028	
20	Gear	1	3020-1		54	Key	1		A5 × 75
22	Lever	1	1046		55	Key	1	3038	
23	Feed Rod	1	7009		56	Bearing	2		7000102
24	Screw	2		M10 × 30	57	Gear	2	3016	
25	Boss	1	1047		58	Gear	2	3047	
26	Pin			5 × 40	59	Shift Lever	2	3003	
27	Gear Box	1	3001		62	Key	2	3018	
	Housing	1			63	Shaft	1	3017	
28	Plate	1	3002		64	Nut	2	3049	
29	Screw	4		M6 × 16	65	Shaft	2	3048	
30	Shaft	1	3012		66	Shaft	2	3006	
31	Circlip	1		12	67	Spring	2	3005	
32	Shift Pivot	1	3013		68	Sleeve	2	3007	
33	Pin	1		4 × 30	69	Housing	2	3004	
34	Shift Yoke	1	3014		70	Shaft	1	3041	
35	Screw	1		M6 × 12	71	Screw	2		M8 × 8
36	Washer	1	3024		71-1	Pin	1	3015	
37	Gear(sleeve)	1	3023-1		72	Gear	1	3042	
			3023-2		73	Gear	1	3044	
					74	Shaft	1	3045	



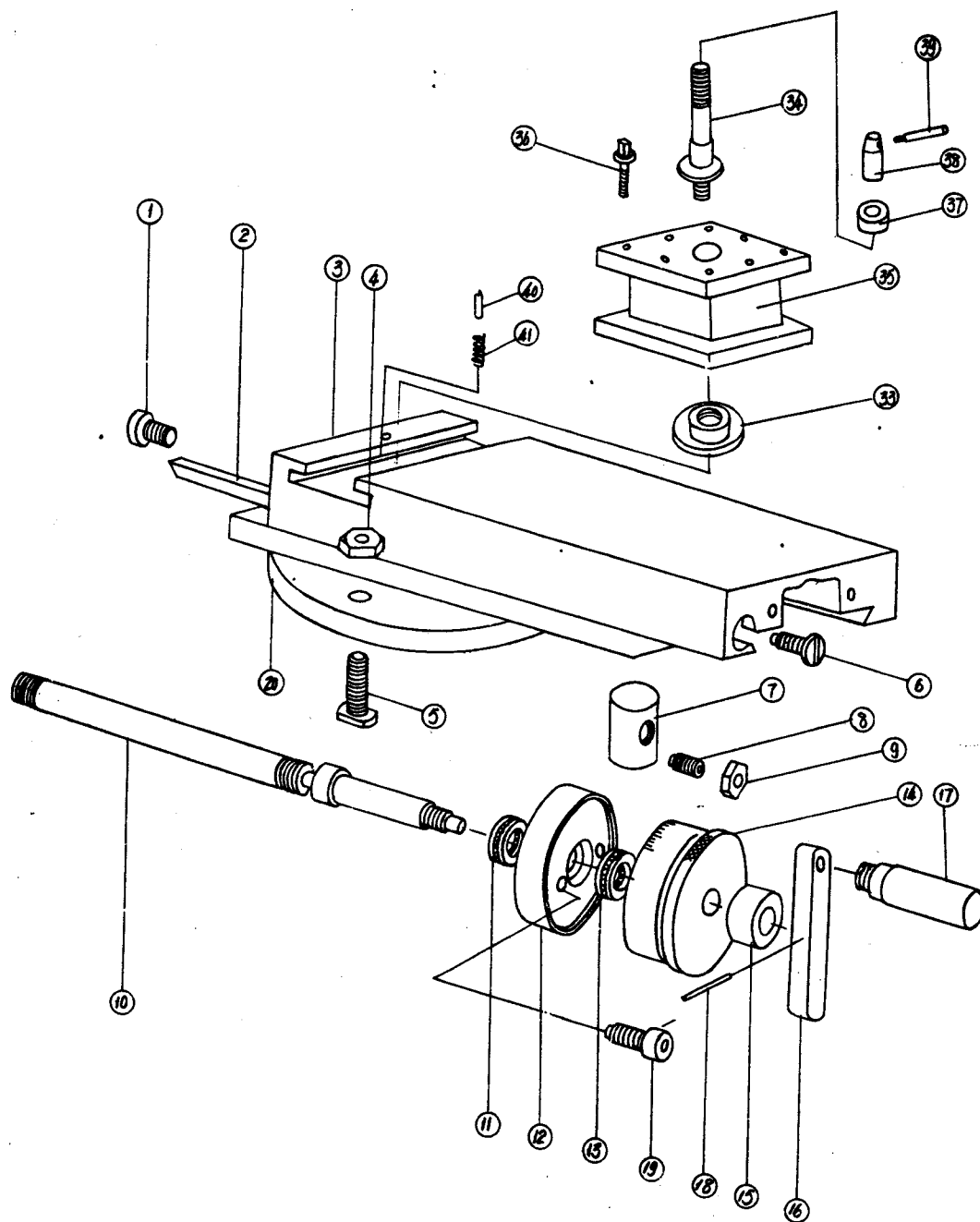
No.	DESCRIP- TION	Q'TY	PART NO.	Specific- ation	No.	DESCRIP- TION	Q'TY	PART NO.	Specific- ation
1	Handle	1	4001	5 × 50 M6 × 20	35	Screw	1		M6 × 12
2	Hand Wheel	1	4002		36	Shaft	1	4023	
3	Index Ring	1	4003		37	Safty Shifter	1	4027	
4	Pin	1			38	Screw	1		M8 × 8
5	Screw	2			39	Spring	1	(4045)	Φ6 × 1 × 16
6	Bracket	1	4004		40	Ball	1		Φ6
7	Gear Shaft	1	4006	5 × 30	41	Boss	1	4030	
8	Bushing	1	4007		42	Pin	1		5 × 40
9	Pin	1			43	Dog	1	4028	
10	Gear	1	4010		44	Screw	1		M5 × 8
11	Washer	2	4011		45	Lever	1	4031	
12	Gear Shaft	1	4009		47	Shaft	1	4029	
13	Gear	1	4034	5 × 33	47-1	Pin	1		5 × 10
14	Gear	1	4033		47-2	Pin	1		4 × 30
15	Pin	3			47-3	Screw	2		M5 × 6
17	Shaft	1	4039		48	Screw	2		M8 × 35
18	Bushing	1	4017		49	Screw	1		M6 × 16
18-1	Screw	2			50	Gear	1	4022	
19-1	Gear	1	4032	M5 × 8	51-1	Screw	1		M6 × 65
19-2	Sleeve	2	4038		52	Housing	1	4021	
20	Shaft	1	4015		51-2	Sleeve	1	4020	
20-1	Worm Gear	1	4013		53	Thread Dial	1	4019	
20-2	Screw	1			54	Nut	3		M6
21	Worm	1	4014		55	Screw	3		M6 × 12
22	Flat Key	1		5 × 38	56	Half Nut	1	4024	
23	Pin	1		5 × 25	57	Half Nut	1	4025	
24	Gear	1	4008	5 × 25 Φ6		Housing	1		
25	Bushing	1	4016		58	Screw	1		M6 × 25
26	Gear Shaft	1	4036		59	Gib	1	4026	
27	Lever	1	4037		61	Shaft	1	4042	
28	Pin	1			62	Gear	1	4044	
29	Ball	1			63	Bushing	1	4043	
30	Spring	1	(4045)	Φ6 × 1 × 16	64	Screw	1		M6 × 6
31	Screw	1		M8 × 12	65	Apron Case	1	4005	
32	Screw	3		M6 × 45	66	Worm Frame	1	4012	
33	Boss	1	4040		67	Limit Block	1	4035	
34	Washer	1	4041		68	Screw	2	4018	

SADDLE



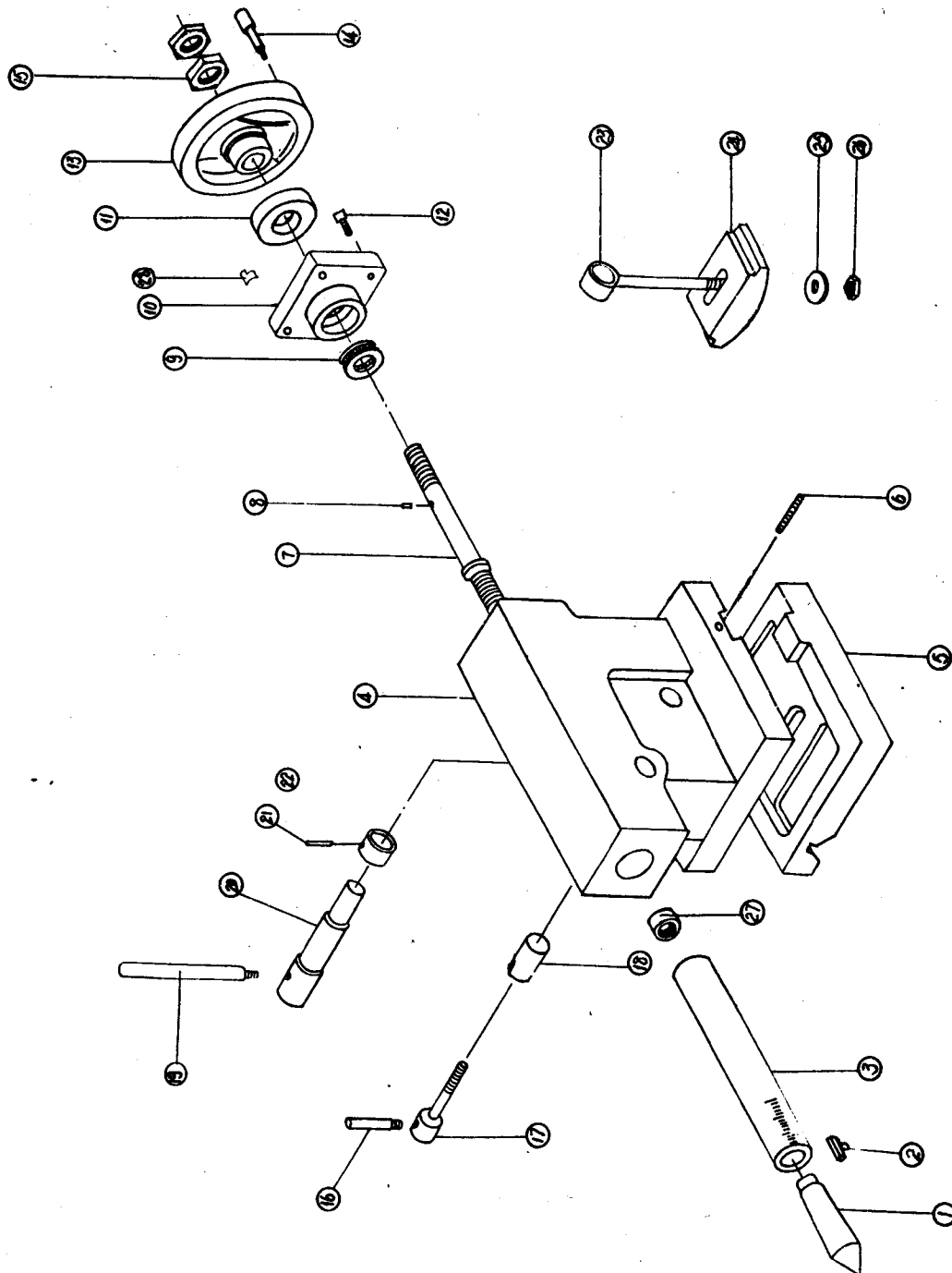
No.	DESCRIP- TION	Q'TY	PART NO.	Specific- ation	No.	DESCRIP- TION	Q'TY	PART NO.	Specific- ation
1	Saddle	1	5005		22	Slide Plate	1	5002	
2	Screw	2		M5 × 10	23	Slide Plate	1	5003	
3	Wiper	1	5010		24	Slide Plate	1	5004	
4	Screw	2		M5 × 5	25	Screw	4		M8 × 25
5	Cover	1	5012		27	Screw	2		M5 × 10
6	Screw	2		M5 × 5	28	Handle	1	5020、 5021、 5052、5023	
7	Wiper	2	5001						
8	Pin	2		5 × 45					
9	Screw	4		M10 × 30	29	Bracket	1	5019	
10	Screw	1	5050		30	Pin	1		4 × 20
11	Screw	2	5041		31	Screw	1		M6 × 6
12	Tool Post	1	5024		31-1	Washer	1	5017	
	Slide				32	Nut	1	5018	
13	Gib	1	5040		33	Signboard	1	5052	
14	Bushing	2	5007		34	Rivet	2		2 × 6
14-1	Screw	2		M6 × 16	35	Bearing	1		8102
15	Nut	2	5008		36	Bracket	1	5015	
16	Wedge	1	5009		37	Screw	1		M6 × 30
	aduster				38	Bearing	2		8102
17	Screw	1		M6 × 16	39	Screw	1	5006	
18	Slide Plate	1	5011		40	Gear	1	5013	
19	Screw	2		M8 × 25	41	Screw	1		M6 × 6
20	Wiper	1	5051		42	Dial	1	5016	
21	Screw	2		M5 × 10	43	Screw	1	5053	

TOOL POST



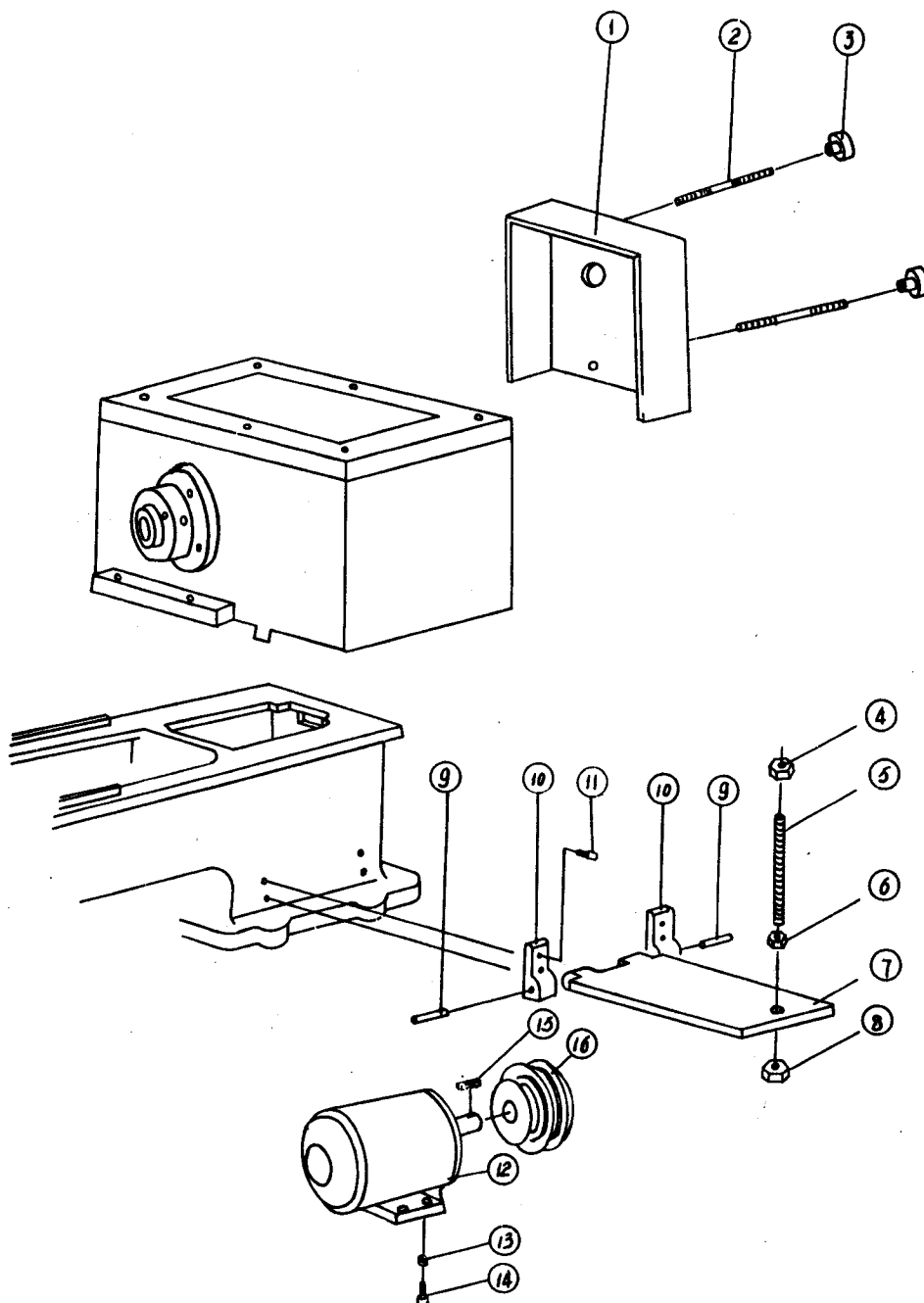
No.	DESCRIPTION	Q'TY	PART No.	Specification
1	Screw	1	5029	M10
2	Gib	1	5028	
3	Compound Slide	1	5030	
4	Nut	2		
5	Screw	2	5025	
6	Screw	1	5029	
7	Nut	1	5042	M6 × 12
8	Screw	1		
9	Nut	1		
10	Screw	1	5043	M6
11	Bearing	1		8101
12	Bracket	1	5044	8101
13	Bearing	1		
14	Index Ring	1	5045	
15	Nut	1	5046	
16	Bracket	1	5047	
17	Handle	1	5048, 5049	
18	Pin	1		3 × 16
19	Screw	1		M6 × 25
20	Compound Rest	1	5026	
33	Nut	1	5031	
34	Shaft	1	5032	
35	Tool Post	1	5033	
36	Screw	8	5034	
37	Collar	1	5035	
38	Boss	1	5036	
39	Handle	1	5037	
40	Pin	1	5038	
41	Spring	1	5039	

TAIL STOCK



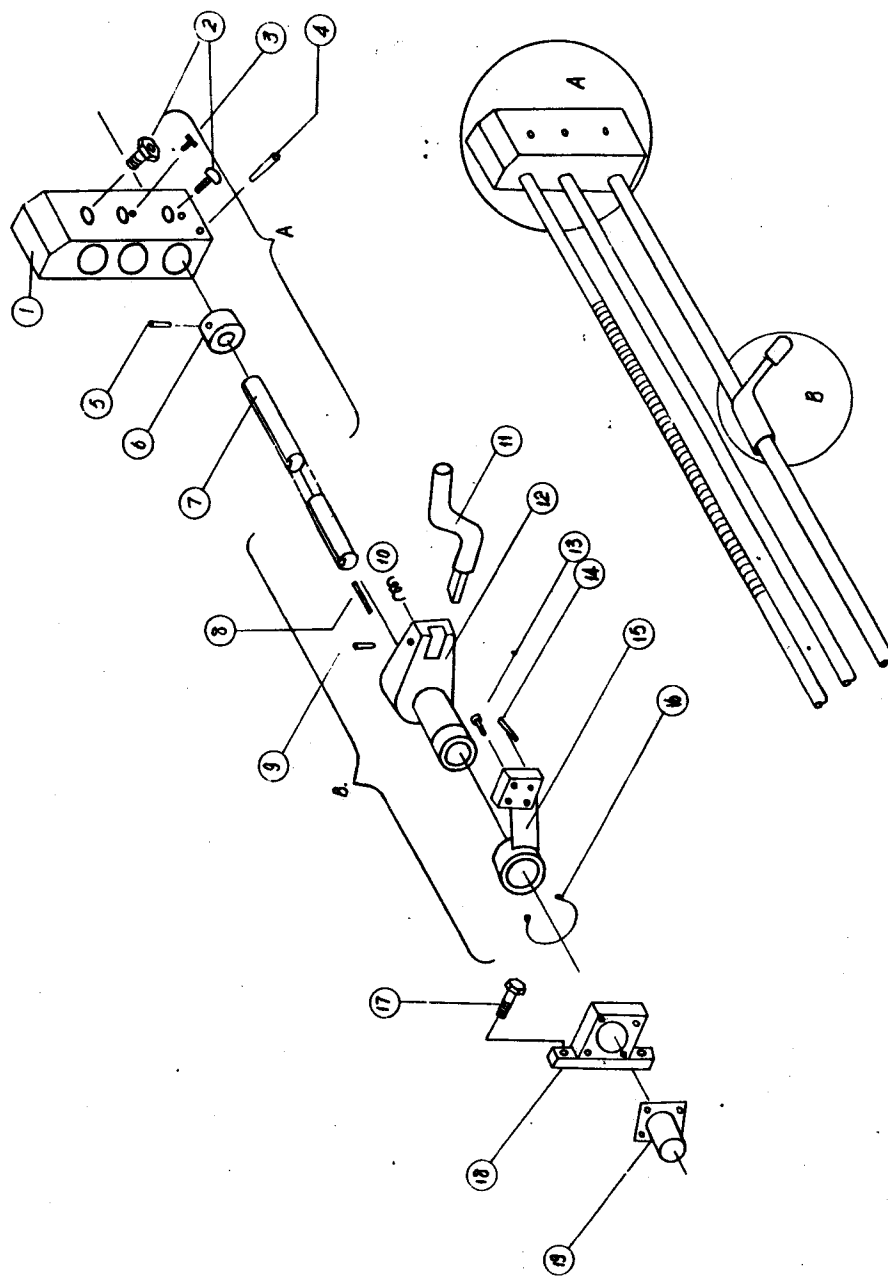
No.	DESCRIPTION	Q'TY	PART No.	Specification
1	Center	1	8019	
2	Key	1	8012	
3	Quill	1	8010	
4	Tail Stock	1	8001	
5	Base	1	8002	
6	Screw	2	8018	
7	Screw	1	8009	
8	Pin	1		4 × 8
9	Bearing	1		8101
10	Bracket	1	8006	
11	Index Ring	1	8007	
12	Screw	4		M6 × 20
13	Hand Wheel	1	8005	
14	Handle	1	5020	
			5021	
			5022	
15	Nut	2		M10
16	Handle	1	8014	
17	Lock Screw	1	8013	
18	Lock Shaft	1	8011	
19	Handle	1	8004	
20	Shaft	1	8017	
21	Pin	1		5 × 30
22	Collar	1	8016	
23	Shaft	1	8015	
24	Bass Shoe Block	1	8020	
25	Washer	1	8022	12
26	Nut	1		M12
27	Nut	1	8008	
28	Index Piece	1	8021	

BED AND DRIVE ASSEMBLY



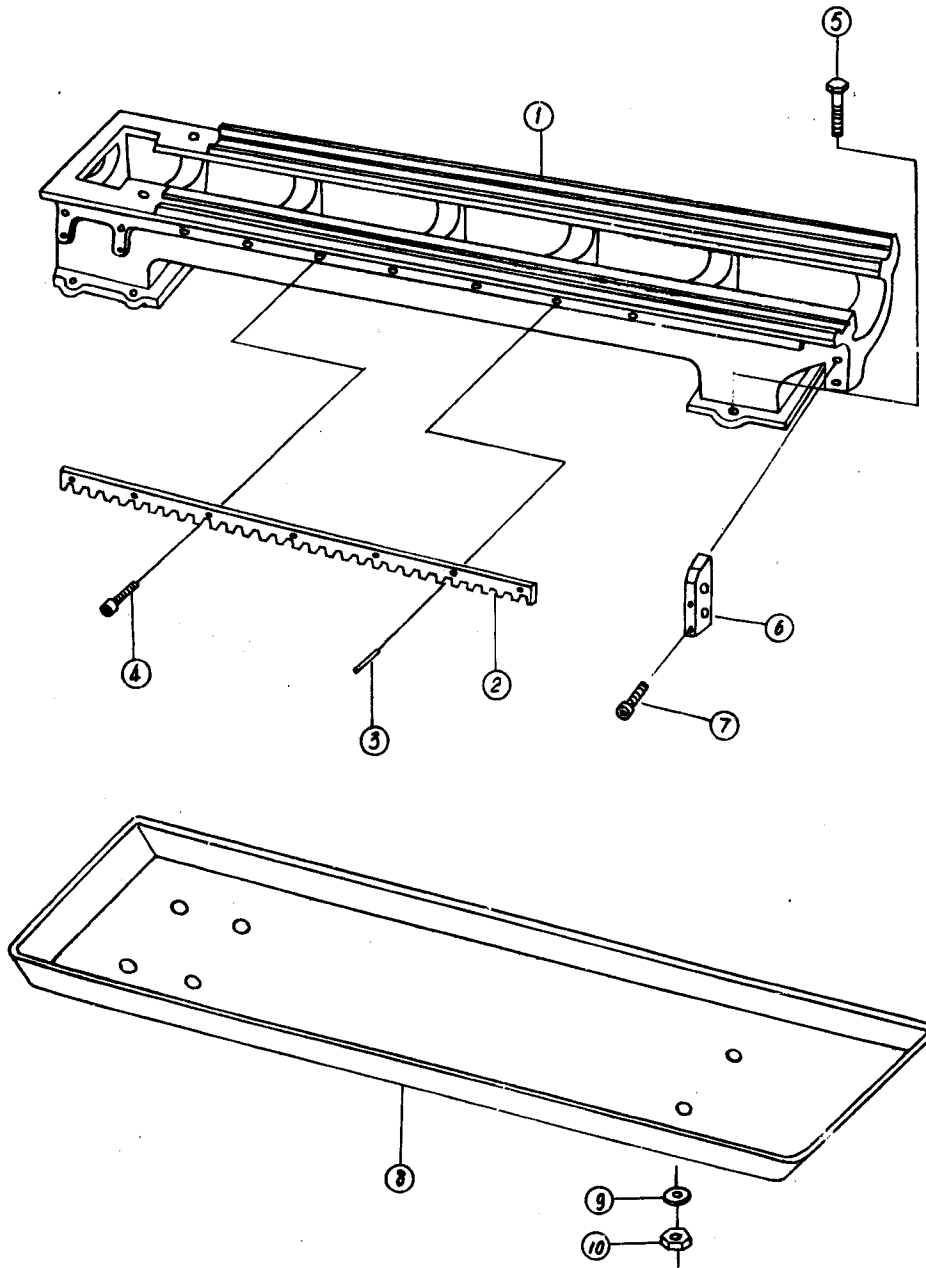
No.	DESCRIPTION	Q'TY	PART No.	Specification
1	Cover	1	2003	
2	Screw	2	2002	
3	Nut	2	2001	
4	Nut	1		M10
5	Screw	1	7013	
6	Nut	2		M12
7	Plate	1	7018	
8	Washer	2		12
9	Shaft	2	7017	
10	Bracket	2	7016	
11	Screw	4		M8 × 25
12	Motor	1		1.1KW
13	Nut	4		M10
13-1	Washer	1		10
14	Screw	4		M10 × 40
15	Key	1		8 × 40
16	Pulley	1	7001	

CONTROL SWITCH ASSEMBLY



No.	DESCRIPTION	Q'TY	PART No.	Specification
1	Bracket	1	7011	
2	Screw	2		M10 × 60
3	Oil Cup	2		Φ 6
4	Pin	2		6 × 55
5	Pin	1		4 × 30
6	Collar	1	7026	
7	Rod	1	7010	
8	Key	1		5 × 38
9	Pin	1		4 × 20
10	Spring	1	7020	
11	Handle	1	7015	
12	Bracket	1	7019	
13	Screw	2		M6 × 20
14	Pin	2		5 × 20
15	Bracket	1	7014	
16	Circlip	1		32
17	Screw	1		M8 × 25
18	Bracket	1	7021	
19	Switch	1		H25B - 10/2D009

BED ASSEMBLY



No.	DESCRIPTION	Q'TY	PART No.	Specification
1	Lathe Bed	1	7004	
2	Rack Gear	1	7005, 7007	
3	Pin	6		5 × 18
4	Screw	6		M6 × 16
5	Screw	6		M10 × 35
6	Bracket	1	7011	
7	Screw	2		M10 × 60
8	Chip Pan	1	7023	
9	Washer	6		10
10	Nut	6		M10

END