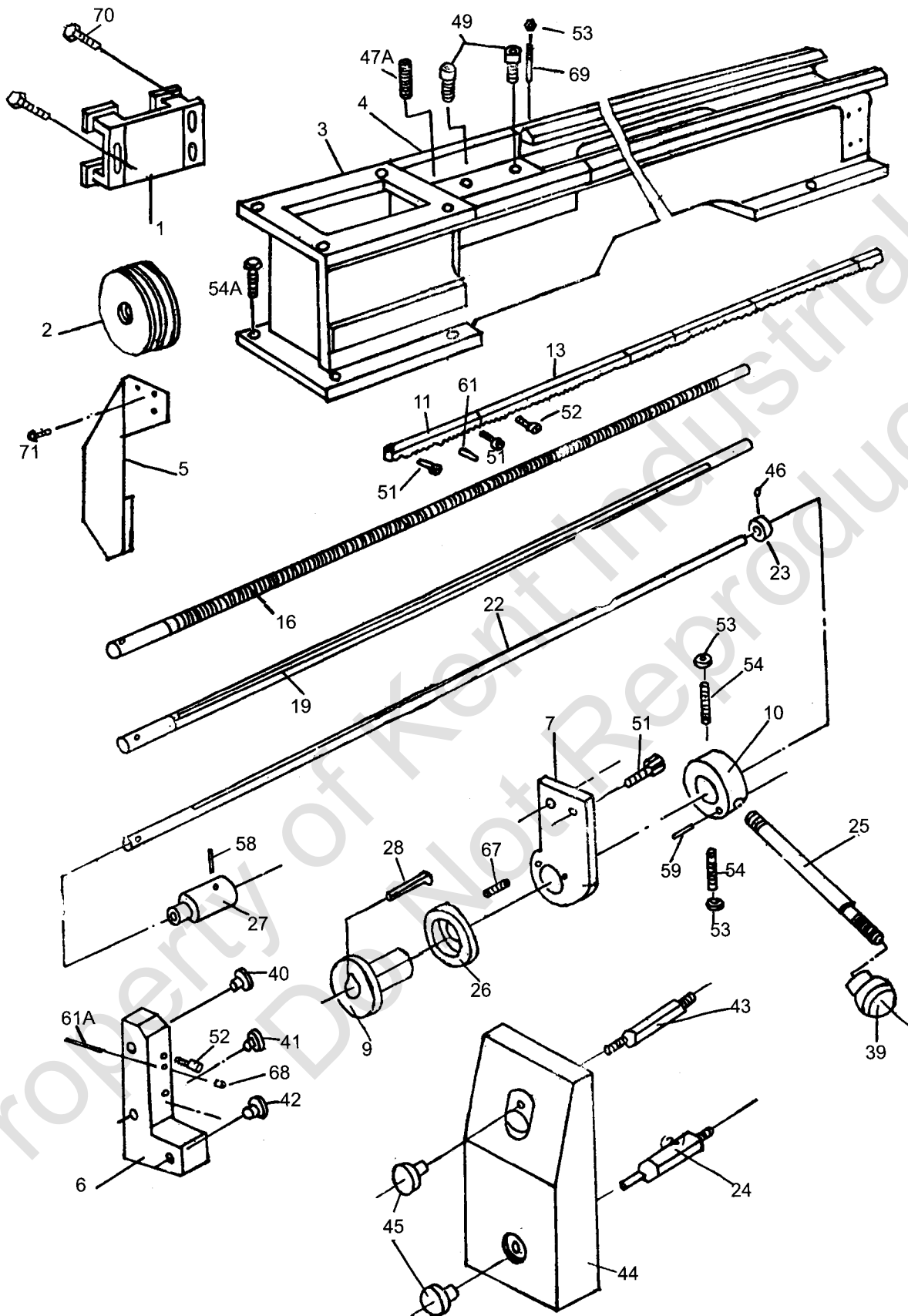


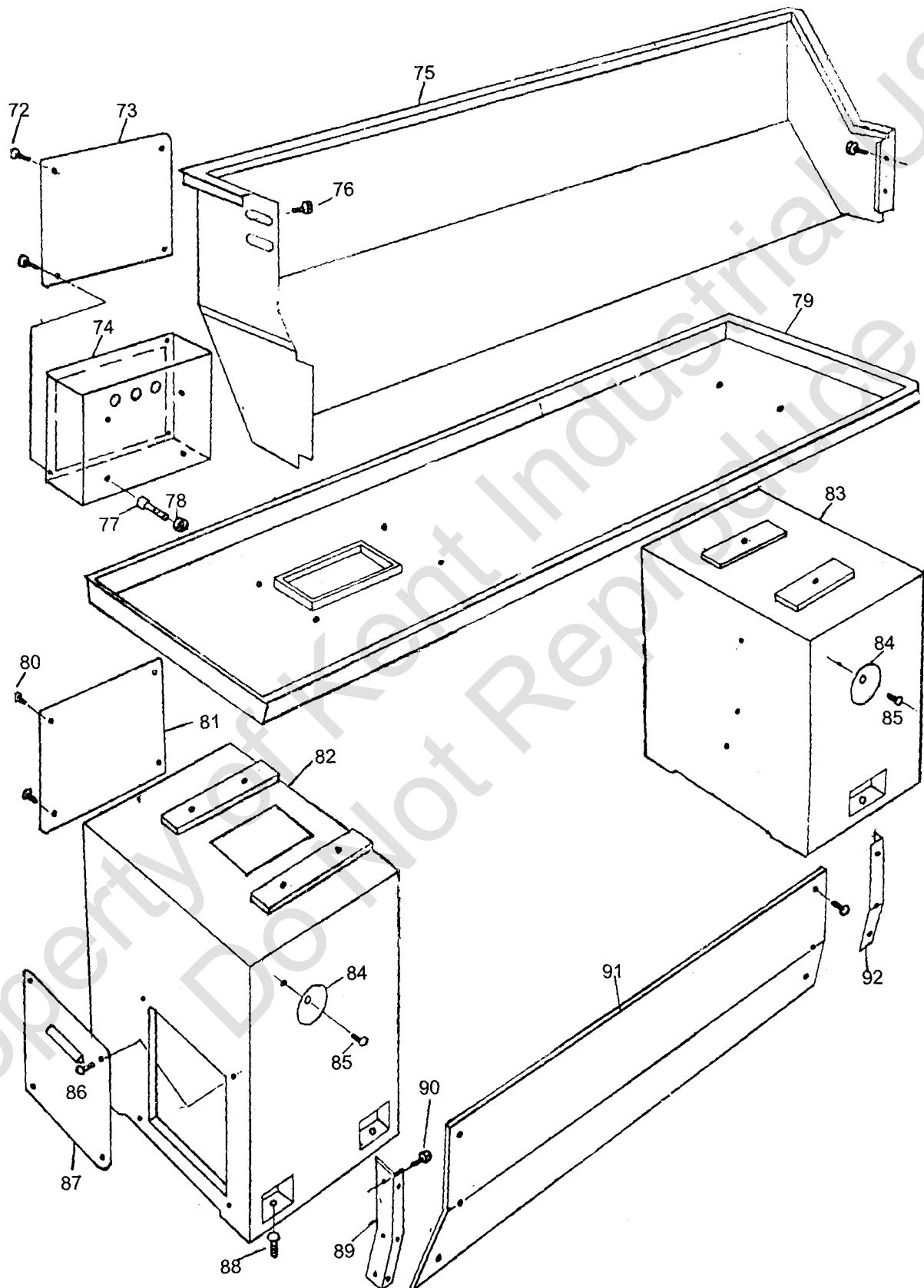
## Table of Contents

Table of Contents .....	1
Bed Assembly .....	2-6
Headstock Assembly .....	7-12
Gear Box Assembly.....	13-18
Apron Assembly .....	19-23
Top Slide Toolpost Saddle and Cross Slide .....	24-27
Saddle and Cross Slide Assembly (Telescoping Lead Screw) .....	28-29
Tailstock Assembly .....	30-32
Follow Rest .....	33
Steady Rest .....	34-35
Quick Change Collet Assembly.....	36-37

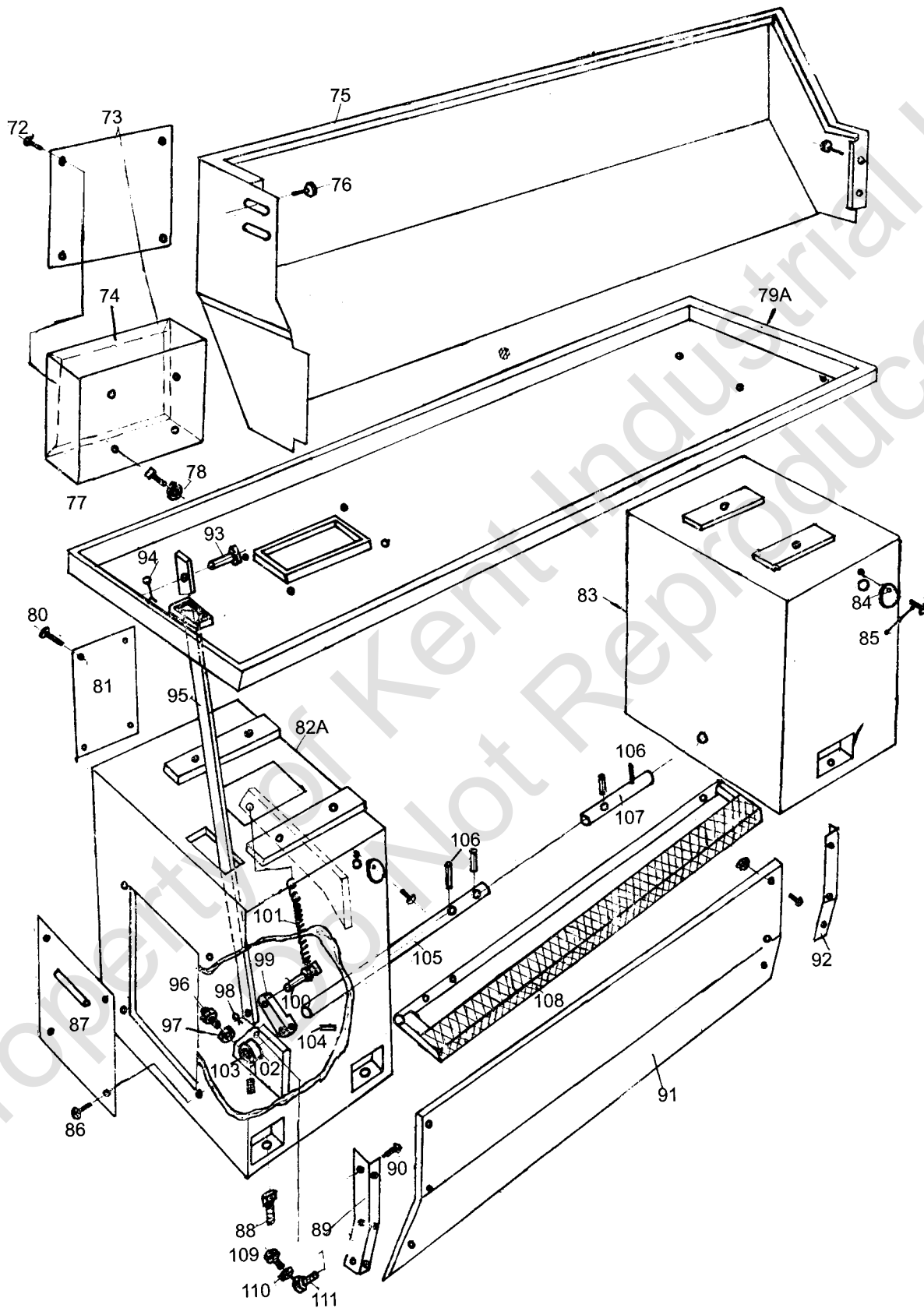
# Bed Assembly



# Bed Assembly



# Bed Assembly

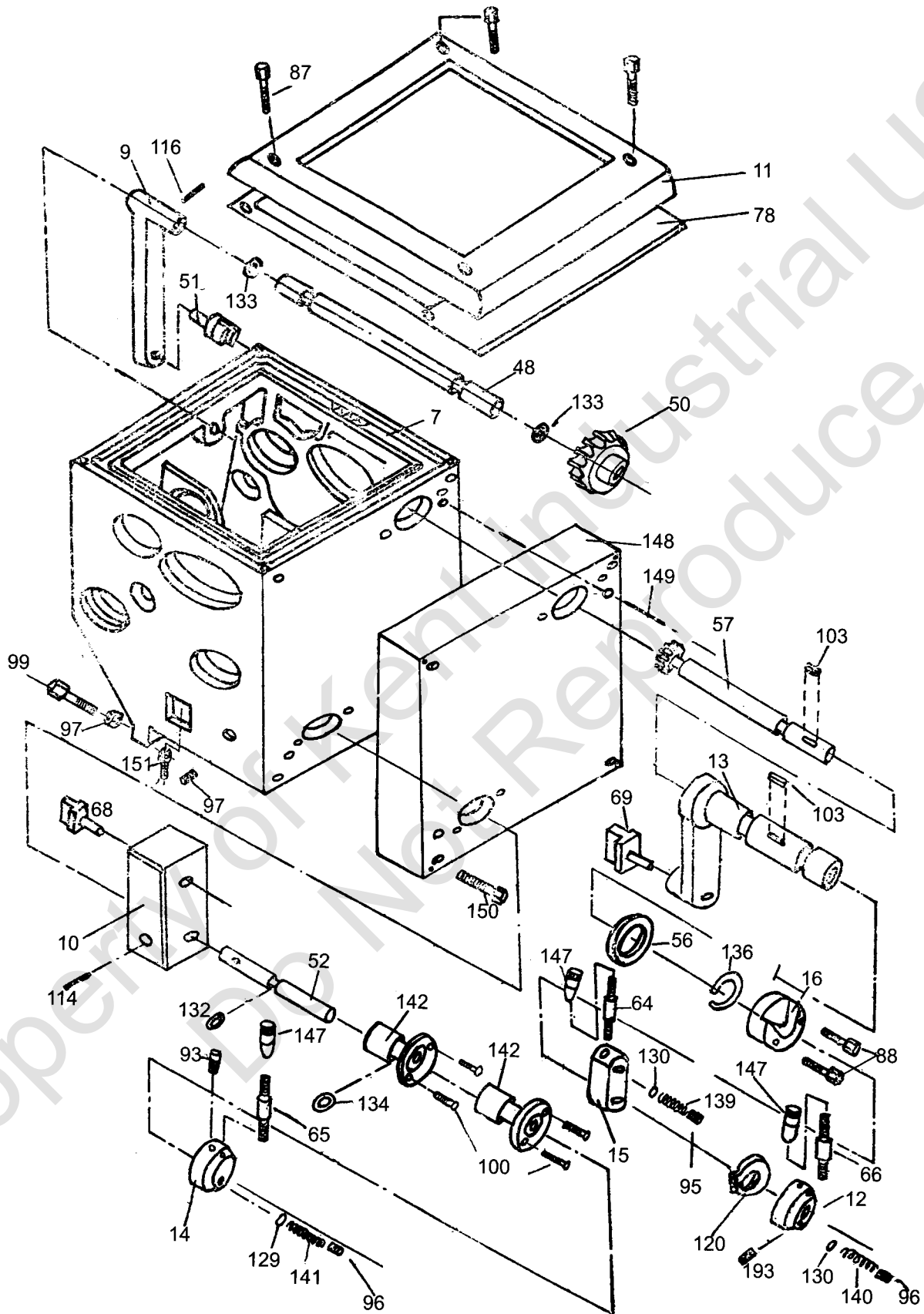


## Bed Assembly

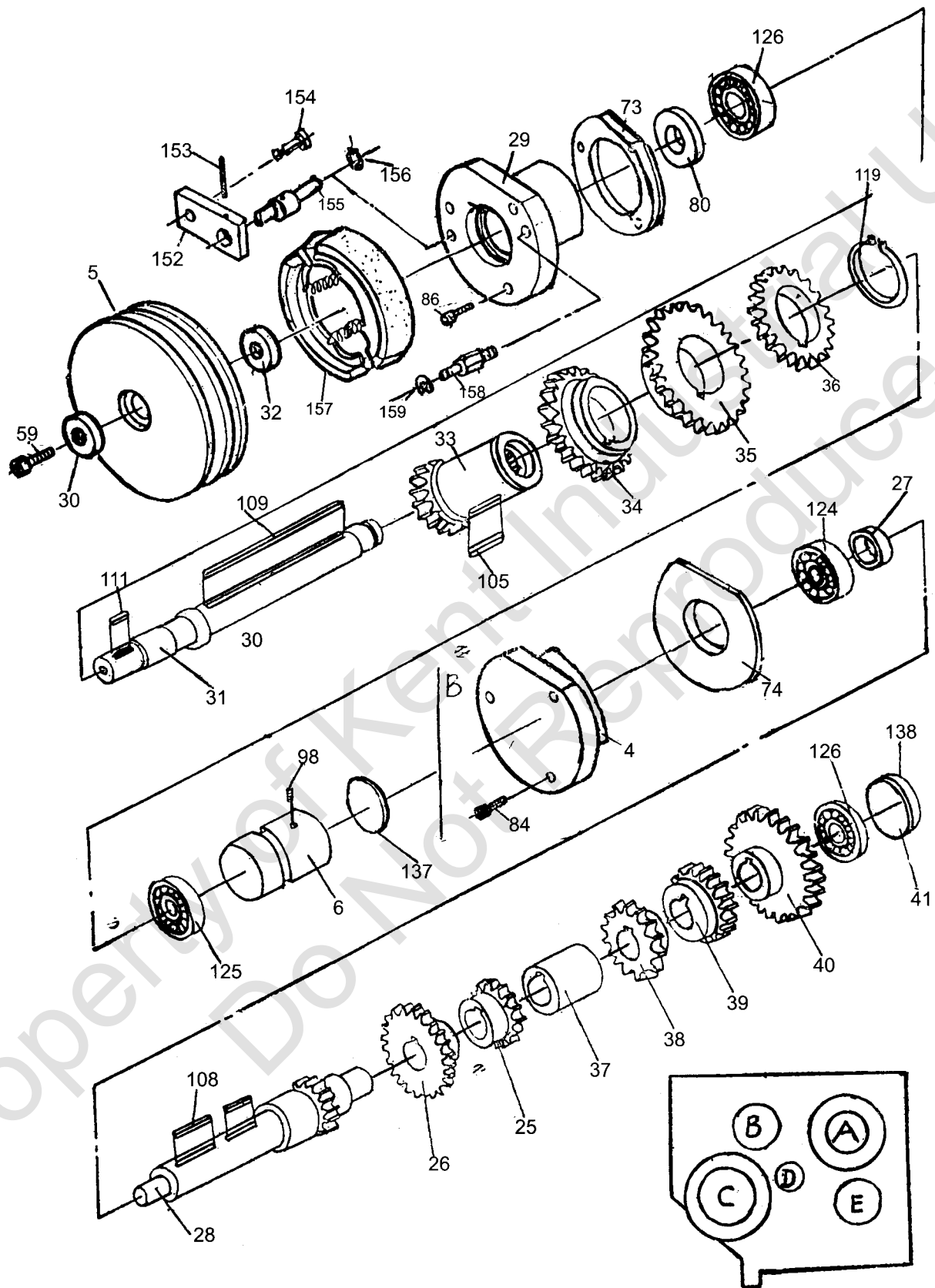
Index No.	Part No.	Description	Size	Qty
1	.....01110	Motor Base		1
2	.....01106	Pulley		1
3	.....01101	Bed		1
4	.....01102	Gap		1
5	.....01215	End Cover		1
6	.....01104	Bracket		1
7	.....01105	Bracket		1
9	.....01201	Collar		1
10	.....01202	Handle		1
11	.....01203	Rack		1
13	.....01204-2	Rack		1
16	.....01205-3	Lead Screw		1
19	.....01206-3	Feed Rod		1
22	.....01207-3	Shaft		1
23	.....01208	Collar		1
24	.....01209	Shaft		1
25	.....01210	Handle		1
26	.....01211	Brake Ring		1
27	.....01212	Collar		1
28	.....01213	Key		1
	.....01214-3	Oil Pan (not shown)		1
39	.....01501	Knob		1
40	.....01502	Plug		1
41	.....01503	Plug		1
42	.....01504	Plug		1
43	.....04244	Screw		2
44	.....04510	Cover		1
45	.....04247	Lock Nut		2
46	.....TS-1522021	Set Screw	M5X8	1
47A	.....TS-1523051	Set Screw	M6X16	1
49	.....TS-1505061	Hex Socket Cap Screw	M10X40	4
51	.....TS-1503051	Hex Socket Cap Screw	M6X20	3
52	.....TS-1540061	Hex Socket Cap Screw	M8X55	2
53	.....TS-1540061	Hex Nut	M8	4
54	.....GHB1340-54B	Screw	M8X28	2
54A	.....TS-1492061	Hex Cap Bolt	M12X60	6
58	.....GHB1340-58B	Pin	3X25	1
59	.....GHB1340-59B	Pin	8n6X25	1
61	.....GHB1340-61B	Pin	6X28	1
61A	.....GHB1340-61AB	Pin	6X55	1
67	.....GHB1340-67B	Spring	1 X 7.5 X 25	3

68	GHB1340-68B	Oil Ball	8	2
69	GHB1340-69B	Pin	8X60	2
70	GHB1340A-70B	Hex Cap Bolt	M10X35	3
71	GHB1340A-71B	Screw	M6X8	2
72	GHB1340A-72B	Screw	M5X6	4
73	18702	Cover		1
74	18701	Electrical Box		1
75	12701	Splash Guard		1
76	GHB1340A-76B	Screw	M6X10	4
77	GHB1340A-77B	Screw	M6X20	4
78	GHB1340A-78B	Nut	M6	4
79	12702	Oil Plate		1
79A	12702A	Oil Plate		1
80	GHB1340A-80B	Screw	M6X10	4
81	01720/11	Cover		1
82	01707	Left Bed Stand		1
82A	01707A	Right Bed Stand		1
83	01708	Bed Stand		1
84	01708A	Cover		2
85	GHB1340A-85B	Screw	M6X10	2
86	GHB1340A-86B	Screw	M6X10	4
87	01720/9	Cover		1
88	GHB1340A-88B	Screw	M12X50	6
89	01722	Bracket		1
90	GHB1340A-90B	Screw	M6X10	6
91	01724	Plate		1
92	01723	Bracket		1
93	22709G	Break Shaft		1
94	GHB1340A-94B	Split Pin	2x12	1
95	22705	Brake Pull Rod		1
96	22713	Cap-Shape Screw		1
97	GHB1340A-97B	Nut	M6	1
98	GHB1340A-98B	Split Pin	2X12	1
99	22101G	Pedal Arm		1
100	22703	Connecting Shaft		1
101	22704	Draw Spring		1
102	22705G	Switch Block		1
103	GHB1340A-103B	Screw	M8X8	1
104	GHB1340A-104B	Pin	5X40	1
105	22704	Drving Shaft-Longer		1
106	GHB1340A-106B	Spring Pin	5X30	3
107	22707G	Drving Shaft		1
108	22712G	Pedal		1
109	GHB1340A-109B	Screw	M10X60	1
110	GHB1340A-110B	Nut	M10	1
111	22702	Butt Rod Support		1

# Headstock Assembly

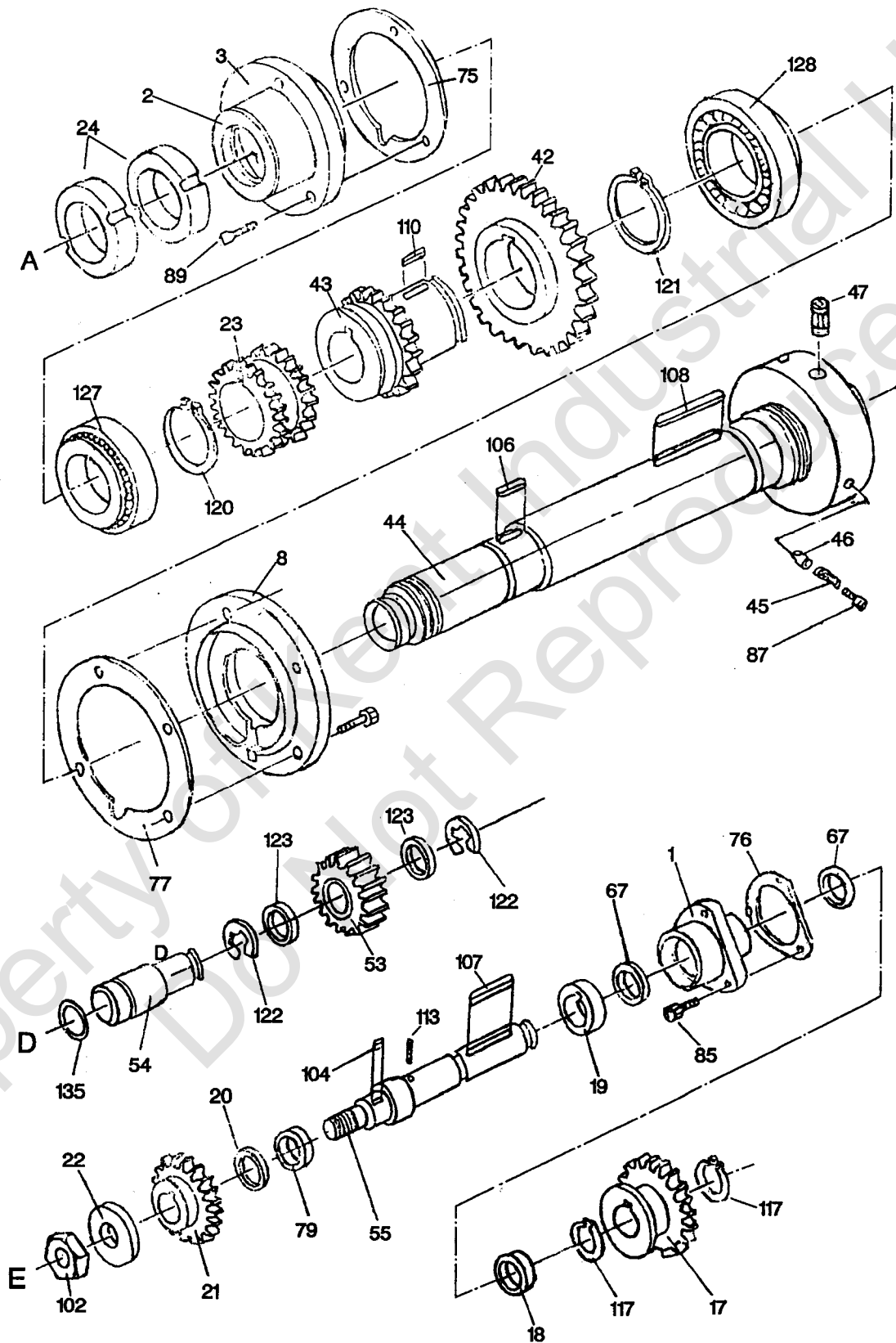


# Headstock Assembly





# Headstock Assembly



## Headstock Assembly

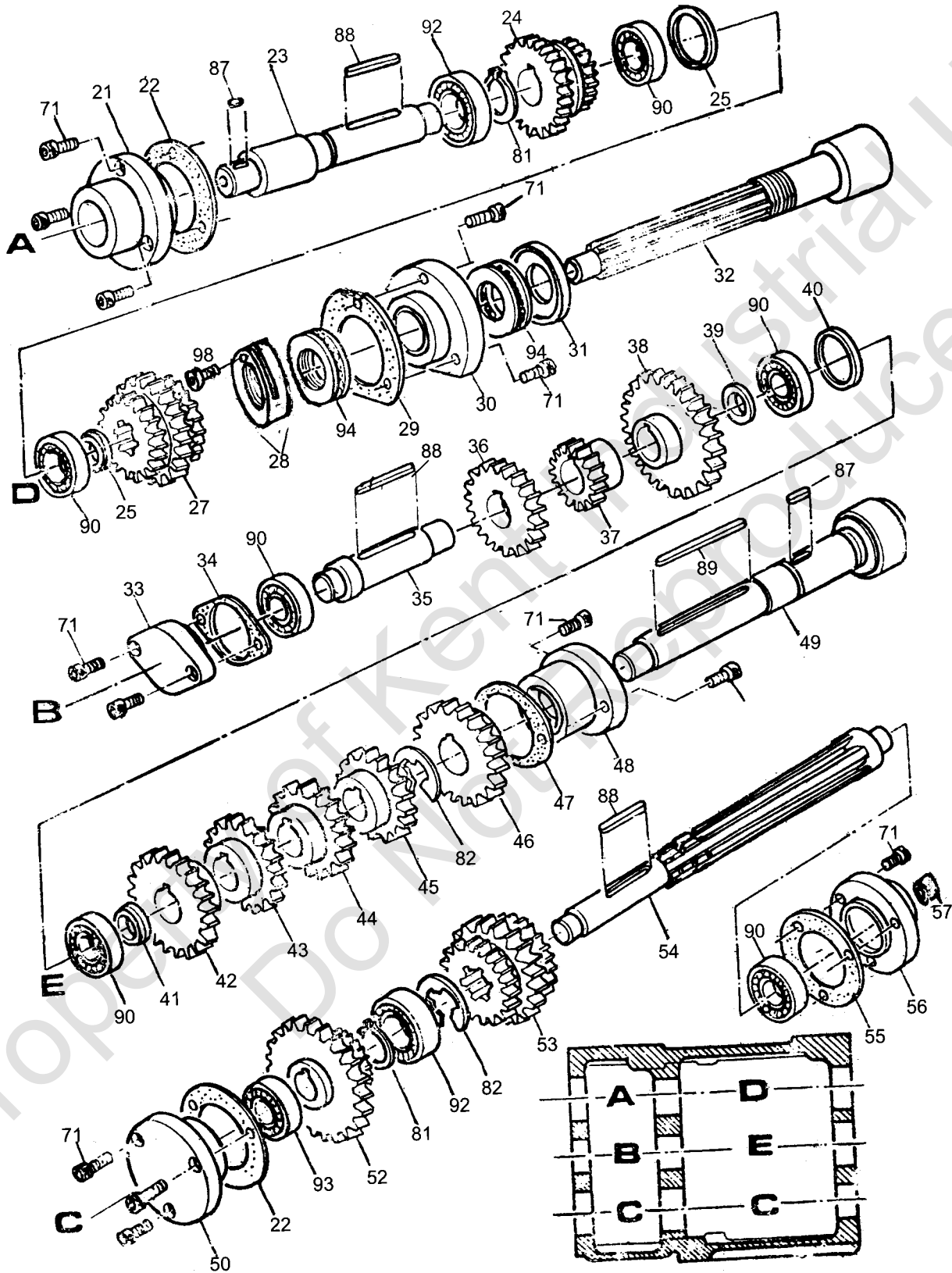
Index No.	Part No.	Description	Size	Qty.
1.....	04101	Collar		1
2.....	04102	Collar		2
3.....	04103	Rear Cover		3
4.....	04104Z	Rear Cover		4
5.....	04105	Pulley		1
6.....	04106	Plug		1
7.....	04107Z	Main Casting		1
8.....	04108Z	Front Cover		1
9.....	04109	Shift Lever		1
10.....	04111	Shaft Housing		1
11.....	04112	Cover		1
12.....	04117	Handle Body		1
13.....	04121	Shaft Collar		1
14.....	04120	Handle Body		1
15.....	04119	Handle Block		1
16.....	04118	Hub		1
17.....	04201	Gear	37T	1
18.....	04202Z	Washer		2
19.....	04203Z	Washer		1
20.....	04204	Washer		1
21.....	04205	Gear	40T	1
22.....	04206	Washer		1
23.....	04207	Gear	37T	1
24.....	04208	Lock Nut		2
25.....	04209	Gear	43T	1
26.....	04210	Gear	51T	1
27.....	04211	Washer		1
28.....	04212	Gear Shaft	16T	1
29.....	04213	Cover		1
30.....	04214Z	Washer		1
31.....	04215	Shaft		1
32.....	04216	Washer		1
33.....	04217	Collar w/Gear	21T	1
34.....	04218	Gear	29T	1
35.....	04219	Gear	46T	1
36.....	04220	Gear	38T	1
37.....	04221	Collar		1
38.....	04222	Gear	26T	1
39.....	04223	Gear	34T	1
40.....	04224	Gear	53T	1
41.....	04225	Plug		1
42.....	04226	Gear	74T	1
43.....	04227	Gear	37T	1
44.....	04228Z	Spindle		1

45	04229	Spring		3
46	04230	Pin		3
47	04231	Cam		3
48	04232	Shaft		1
50	04234	Gear	51T	1
51	04235	Collar		1
52	04250	Shaft		1
53	04237	Gear	30T	1
54	04238	Shaft		1
55	04239	Shaft		1
56	04240	Washer		1
57	04241	Gear Shaft	17T	1
59	04243 Z	Screw		2
64	04248	Handle		2
65	04248-1	Handle		1
66	04249	Handle		1
67	04401	Collar		2
68	04402	Shift Fork		1
69	04403	Shift Fork		1
73	04501	Gasket		1
74	04502	Gasket		1
75	04503	Gasket		1
76	04504	Gasket		1
77	04505	Gasket		1
78	04506	Gasket		1
79	04507	Oil Seal		1
80	04508	Oil Seal		1
	04511	Oil Sight Glass (not shown)		1
84	TS-1501041	Hex Socket Cap Screw	M4×12	3
85	TS-1502041	Hex Socket Cap Screw	M5×16	3
86	TS-1503031	Hex Socket Cap Screw	M6×16	3
87	TS-1504041	Hex Socket Cap Screw	M8×20	4
88	TS-1523051	Hex Socket Cap Screw	M6×20	4
89	TS-1523061	Hex Socket Cap Screw	M6×25	10
93	TS-1523041	Set Screw	M6×12	2
95	TS-1524011	Set Screw	M8×8	1
96	TS-1524021	Set Screw	M8×10	2
97	TS-1524031	Set Screw	M8×12	2
98	TS-1524041	Set Screw	M8×16	1
99	GHB1340-99	Screw	M8×40	2
100	GHB1340-100	Screw	M4×8	4
102	TS-1540081	Hex Nut	M12	1
103	GHB1340-103	Key	5×15	2
104	GHB1340-104	Key	5×18	1
105	GHB1340-105	Key	5×50	1
106	GHB1340-106	Key	6×40	1

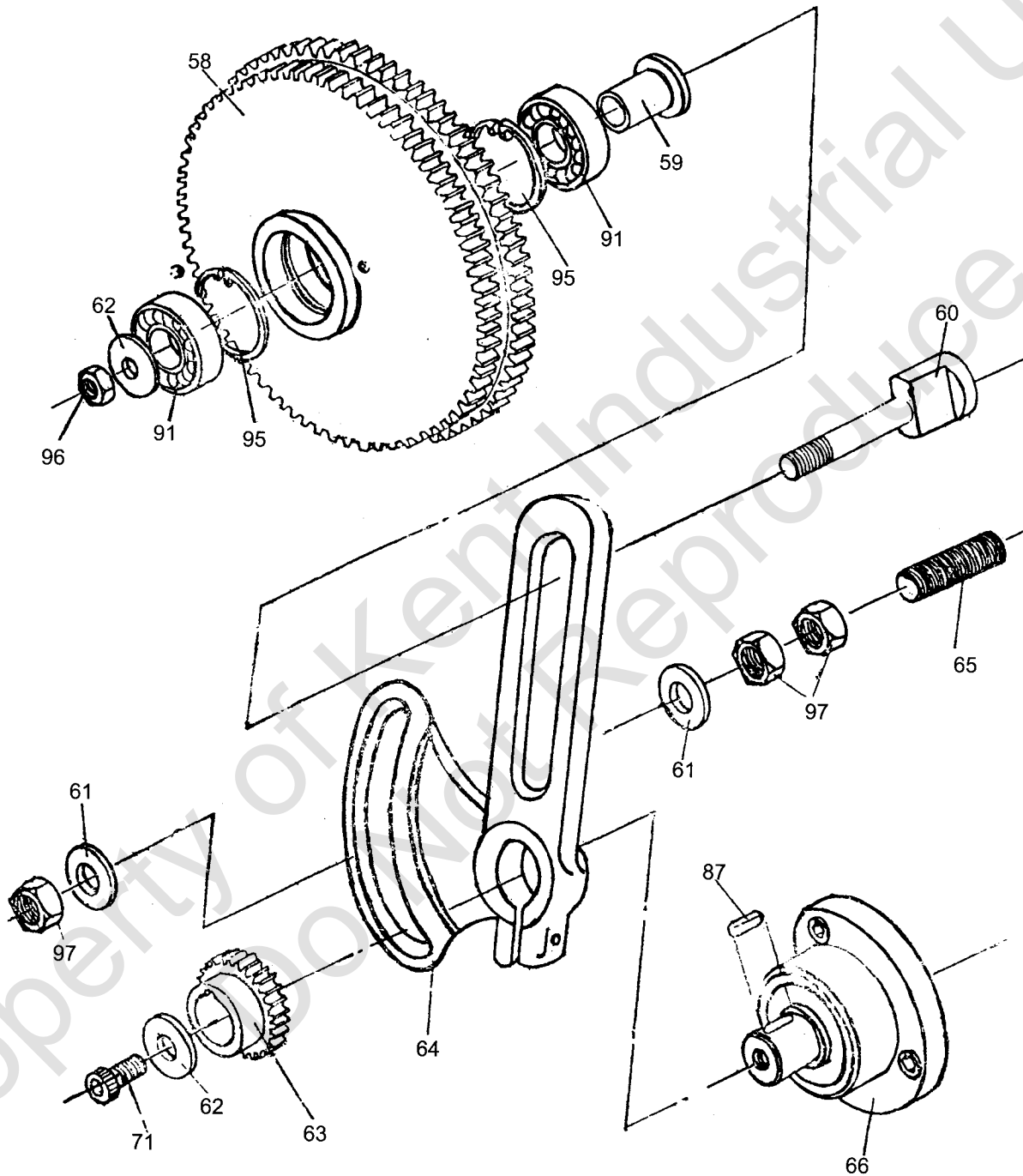
107	GHB1340-107	Key	6×55	2
108	GHB1340-108	Key	6×120	1
109	GHB1340-109	Key	6×120	1
110	GHB1340-110	Key	8×18	1
111	GHB1340-111	Key	5×20	1
113	GHB1340-113	Pin	3×10	1
114	GHB1340-114	Pin	4×18	1
116	GHB1340-116	Pin	5×32	1
117	GHB1340-117	C-Clip	20	3
119	GHB1340-119	C-Clip	35	1
120	GHB1340-120	C-Clip	50	2
121	GHB1340-121	C-Clip	72	1
122	GHB1340-122	C-Clip	42	2
123	GHB1340-123	Bearing	700104E	2
124	GHB1340-124	Bearing	240E	1
125	GHB1340-125	Bearing	203	2
126	GHB1340-126	Bearing	204D	2
127	GHB1340-127	Bearing	7210E	1
128	GHB1340-128	Bearing	7212D	1
129	GHB1340-129	Steel Ball	5	1
130	GHB1340-130	Steel Ball	6	2
133	GHB1340-133	O-Ring	2.4×14	2
134	GHB1340-134	O-Ring	2.4×20	1
135	GHB1340-135	O-Ring	2.4×25	1
136	GHB1340-136	O-Ring	3.1×30	1
137	GHB1340-137	O-Ring	3.1×40	1
138	GHB1340-138	O-Ring	3.1×47	1
139	GHB1340-139	Spring	1×6×7	1
140	GHB1340-140	Spring	1×6×25	1
141	GHB1340-141	Spring	0.9×4.4×19	4
142	04235A	Shift Hub		2
	GHB1340-143	Brass Pipe(not shown)	8×1×30	2
147	GHB1340-147	Lever	Sleeve	3
	VB-A32	V-Belt (not shown)		2
148	04125	Frame		1
149	GHB1340-149	Pin	6×60	2
150	GHB1340-150	Screw	M6×50	4
151	GHB1340-151	Hex Socket Cap Screw	M10×35	2
152	22708G	Connecting Board		1
153	GHB1340A-153	Pin	5 X25	1
154	22709G	Shaft		1
155	22701	Break Shaft		1
156	GHB1340A-156	Circlip	12	1
157	GHB1340A-157	Break Shoet		1
158	22701G	Positioning Axle		1
159	GHB1340A-159	Circlip	8	1

This exploded view diagram illustrates the assembly of a mechanical device, likely a pump or motor component. The main housing (1) is shown with internal components like the impeller (5) and various fasteners (68, 69, 73). The diagram includes numerous numbered parts (1-86) and their corresponding assembly points, such as the shaft (8), bearings (70), and the final output assembly (17, 18, 85). The diagram is overlaid with a large, diagonal watermark reading 'Copyright of Kent Industrial Produce'.

# **Gearbox Assembly**



# Gearbox Assembly



## Gearbox Assembly

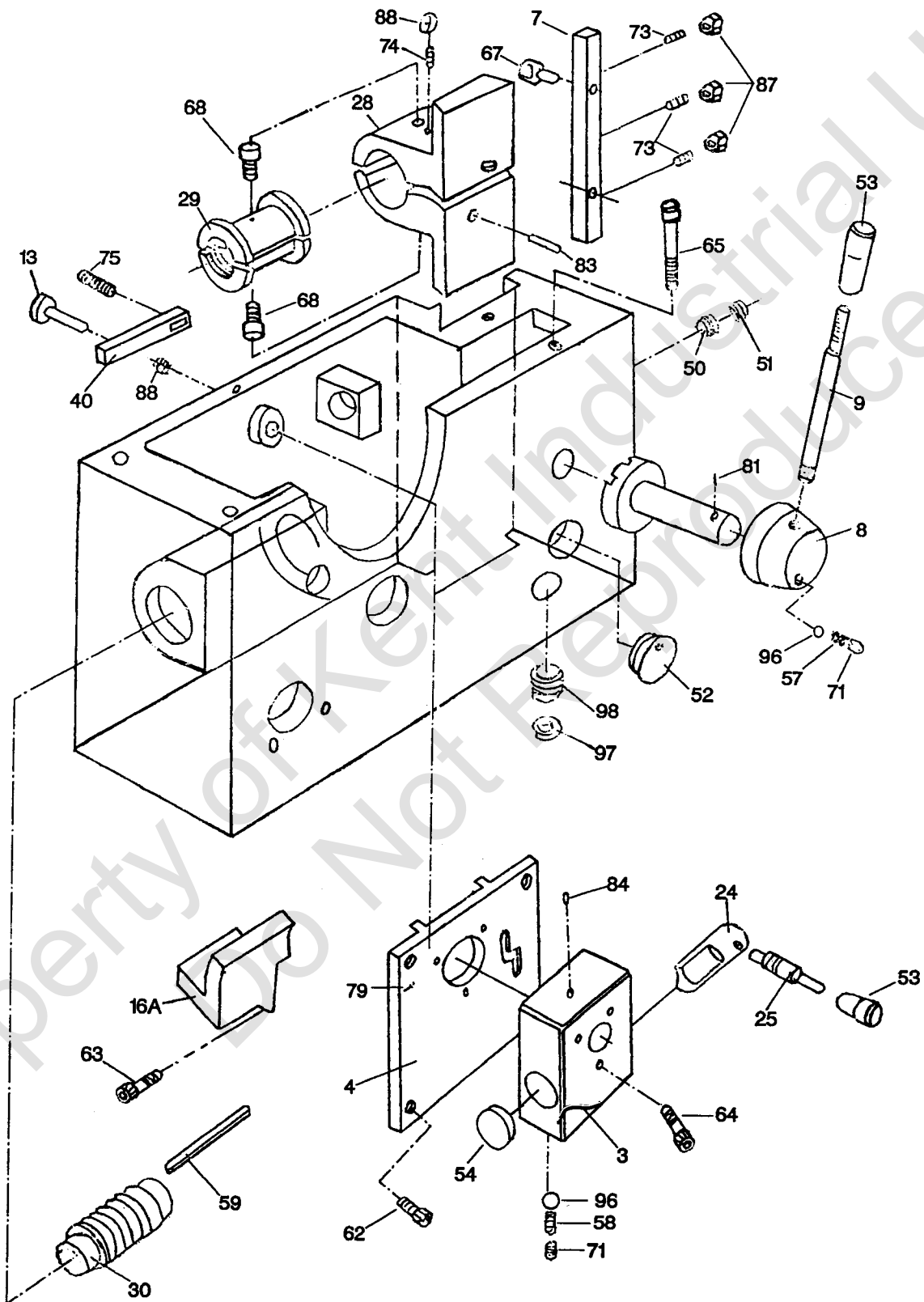
Index No.	Part No.	Description	Size	Qty
1	0511	Casting		1
2	0552	Right cover		1
3	0551	Left cover		1
4	0508	Slipper		3
5	0510	Lever		1
6	0509	Lever		1
7	0553	Slipper		1
8	0504	Shaft		1
9	0503	Handle base		1
10	0501	Lever & ball		2
11	0502	Handle base		1
13	05113	Cover		1
14	0507	Gasket		1
15	0530	Slipper		1
17	0531	Handle		1
18	0449	Plate		2
19	0532	Handle		1
21	0529	Cover		1
22	0525	Gasket		1
23	0539	Shaft		1
24	0538	Gear		1
25	0544	Washer		1
27	0550	Gear		1
28	0546	Nut		1
29	0547	Gasket		1
30	0548	Bush		1
31	0549	Washer		1
32	05271	Shaft		1
33	0528	End cover		1
34	0527	Gasket		1
35	0541	Shaft		1
36	0536	Gear		1
37	0537	Gear		1
38	0540	Gear		1
39	0542	Washer		1
40	0543	Washer		1
41	0544	Washer		2
42	0522	Gear		1
43	0521	Gear		1



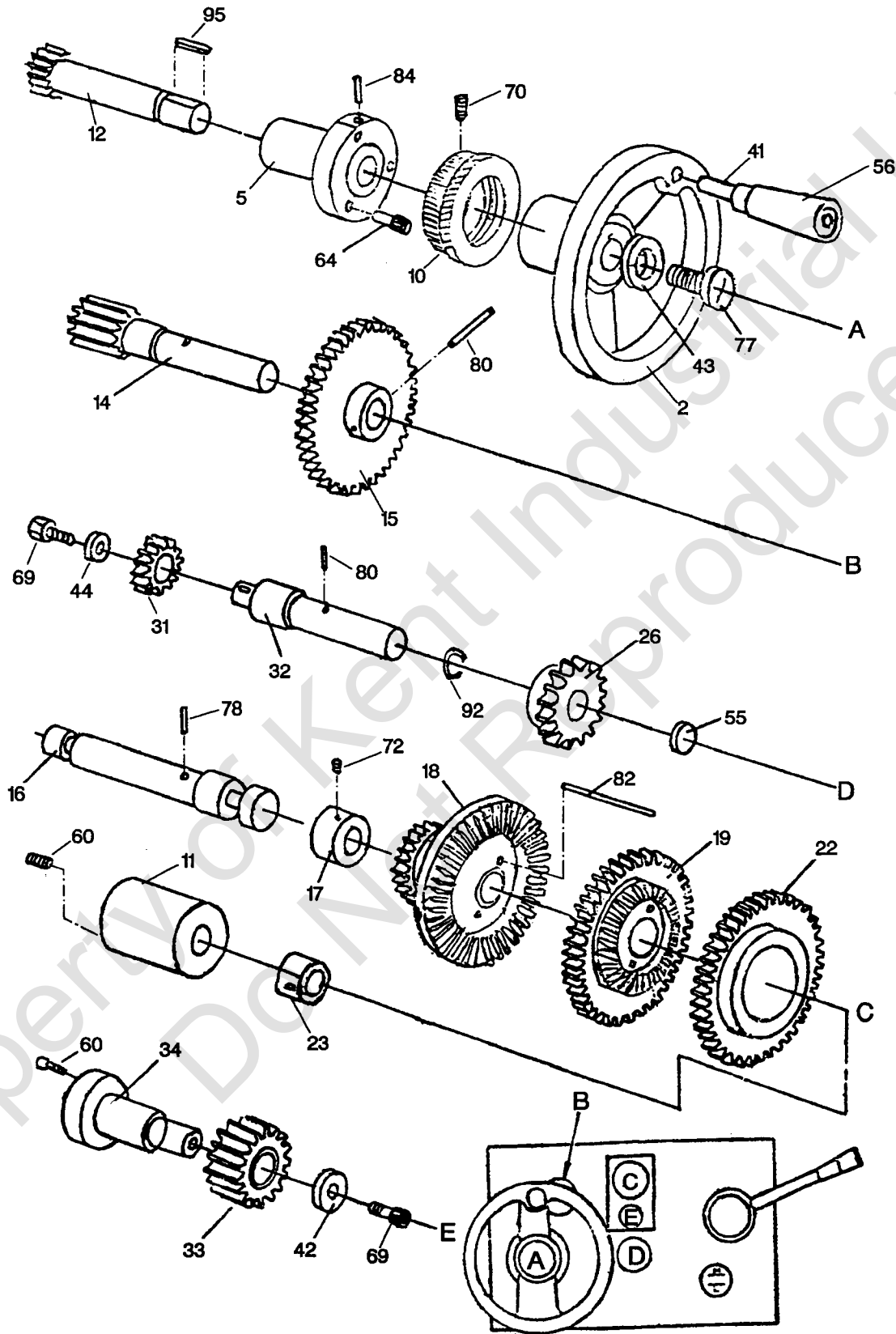
44	.....0519	.....Gear	.....1
45	.....0518	.....Gear	.....1
46	.....0517	.....Gear	.....1
47	.....0516	.....Gasket	.....1
48	.....0514	.....Flange	.....1
49	.....05270	.....Shaft	.....1
50	.....0526	.....End Cover	.....1
52	.....0524	.....Gear	.....1
53	.....0520	.....Gear	.....1
54	.....0523	.....Key Shaft	.....1
56	.....0513	.....Cover	.....1
57	.....0511	.....Copper Sleeve	.....1
58	.....05269	.....Gear	.....1
59	.....05266	.....Collar	.....1
60	.....05268	.....Screw	.....1
61	.....05267	.....Washer	.....2
62	.....0533	.....Washer	.....2
63	.....05258	.....Gear	.....1
64	.....05112	.....Gear Frame	.....1
65	.....05249	.....Screw rod	.....1
66	.....0529	.....Cover	.....1
67	.....GHB1340A-G67	.....Screw	.....M4X8.....8
68	.....GHB1340A -G68	.....Nut	.....ZG3/8".....2
69	.....GHB1340A -G69	.....Screw	.....M8x65.....3
70	.....GHB1340A -G70	.....Screw	.....M6X20.....7
71	.....GHB1340A -G71	.....Screw	.....M6X14.....17
72	.....GHB1340A -G72	.....Pin	.....5x20.....1
73	.....GHB1340A -G73	.....Pin	.....5x40.....2
74	.....GHB1340A -G74	.....Pin	.....5x50.....1
75	.....GHB1340A -G75	.....Cover	.....M10X50.....2
76	.....GHB1340A -G76	.....Spring	.....0.8x5x15.....2
77	.....GHB1340A -G77	.....Spring	.....0.8x5x25.....2
78	.....GHB1340A -G78	.....Screw	.....M8x6.....4
79	.....GHB1340A -G79	.....Ball Steel	.....Φ 6.5.....4
80	.....GHB1340A -G80	.....Circlip	.....40.....2
81	.....GHB1340A -G81	.....Circlip	.....20.....2
82	.....GHB1340A -G82	.....Circlip	.....22.....2
83	.....GHB1340A -G83	.....O-Ring	.....34.5x2.6.....1
84	.....GHB1340A -G84	.....O-Ring	.....25x2.6.....1
85	.....GHB1340A -G85	.....Screw	.....M3x8.....4
86	.....GHB1340A -G86	.....Key	.....5x8.....1
87	.....GHB1340A -G87	.....Key	.....5x14.....3
88	.....GHB1340A -G88	.....Key	.....5x50.....3
89	.....GHB1340A -G89	.....Key	.....5x80.....1

90	.....GHB1340A -G90	.....Thrust	.....202	.....6
91	.....GHB1340A -G91	.....Thrust	.....103	.....2
92	.....GHB1340A -G92	.....Thrust	.....104	.....2
93	.....GHB1340A -G93	.....Thrust	.....302	.....1
94	.....GHB1340A -G94	.....Thrust	.....8105	.....2
95	.....GHB1340A -G95	.....Circlip	.....35	.....2
96	.....GHB1340A -G96	.....Nut	.....M10	.....1
97	.....GHB1340A -G97	.....Nut	.....M10	.....3
98	.....GHB1340A -G98	.....Screw	.....M4x8	.....1

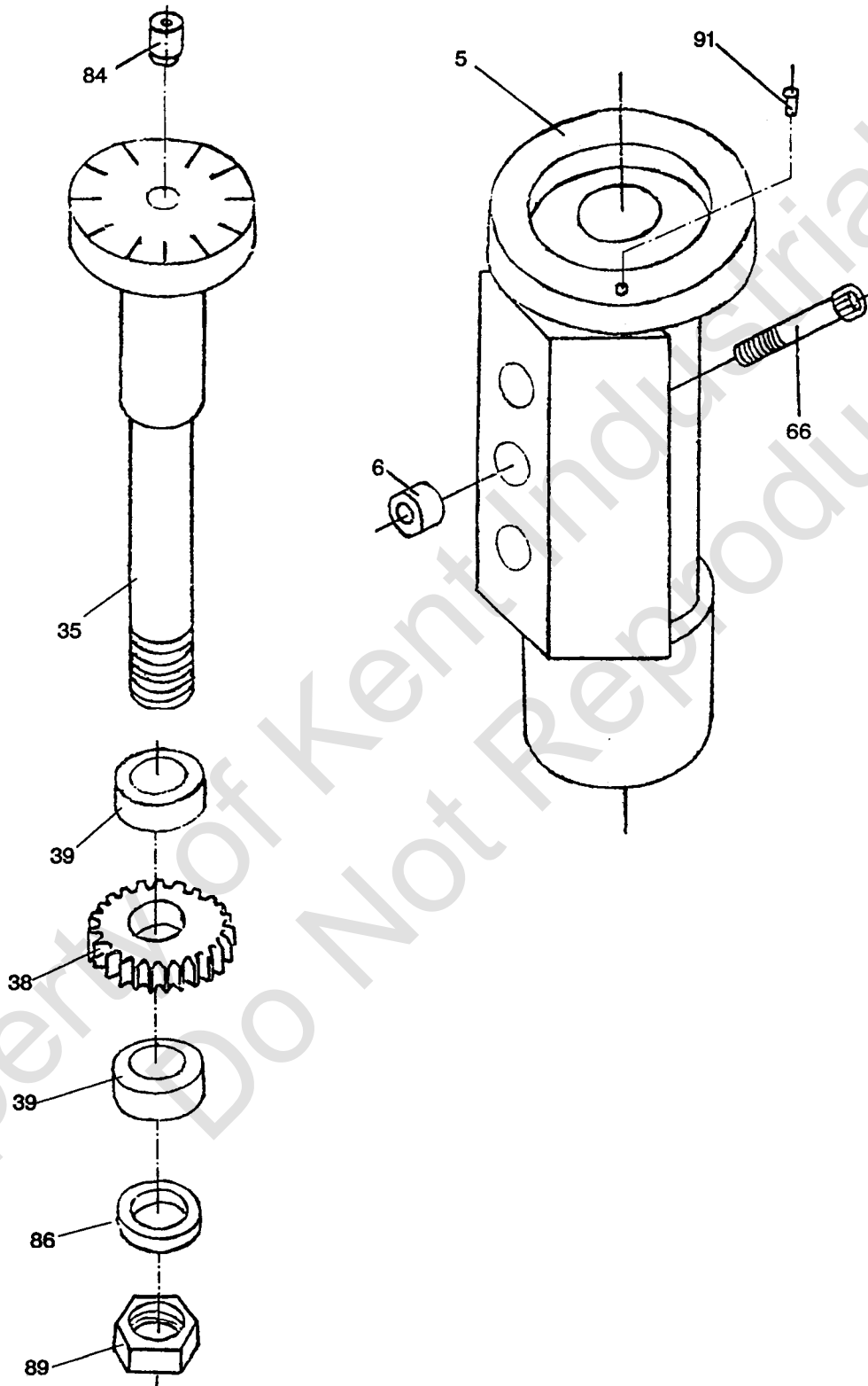
# Apron Assembly



# Apron Assembly



# Apron Assembly

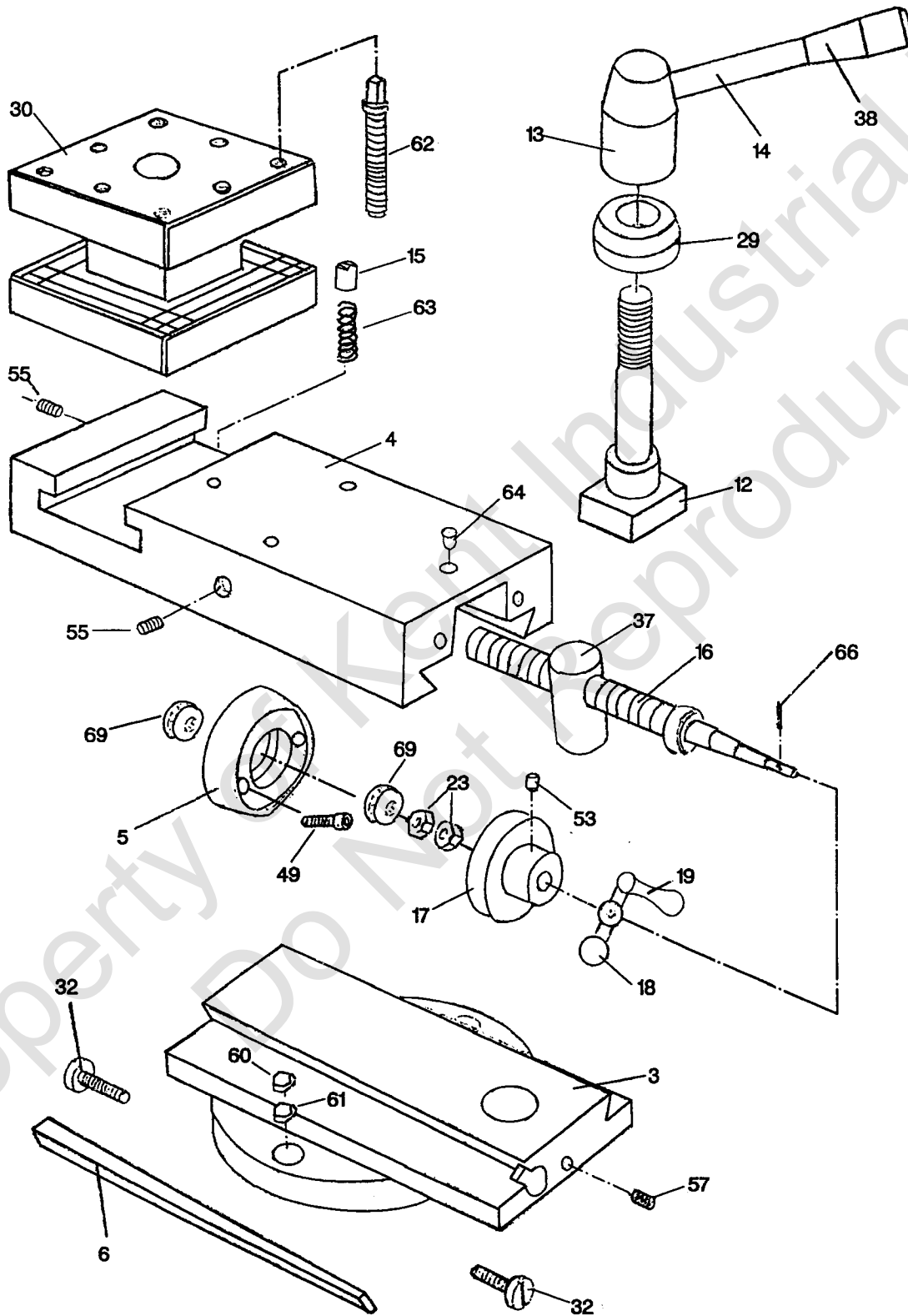


## Apron Assembly

Index No.	Part No.	Description	Size	Qty.
1.....	06101	Casting .....		1
2.....	06102	Handwheel .....		2
3.....	06103	Box .....		1
4.....	06104	Cover .....		1
5.....	06105	Threading Dial Body .....		1
5A.....	06105A	Hub .....		1
6.....	06206	Washer .....		1
7.....	06107	Gib .....		1
8.....	06208	Handle .....		1
9.....	06209	Handle .....		1
10.....	06510	Index Ring .....		1
11.....	06111	Cover .....		1
12.....	06212	Shaft .....		1
13.....	06213	Gear Pin .....	60T	1
14.....	06214	Gear Shaft .....	18T	1
15.....	06215	Gear .....		1
16.....	06216	Shaft .....		1
16A.....	06415	Bracket .....		1
17.....	06417	Cover .....		1
18.....	06218	Gear .....	30T	1
19.....	06219	Gear .....	46T	1
22.....	06220	Gear .....	63T	1
23.....	06421	Shift Fork .....		1
24.....	06222	Shift Lever .....		1
25.....	06223	Shift Handle .....		1
26.....	06224	Gear .....	40T	1
28.....	06126	Bracket .....		1
29.....	06427	Half Nut .....		1
30.....	06228	Worm .....		1
31.....	06429	Gear .....	22T	1
32.....	06230	Shaft .....		1
33.....	06231	Gear .....	18T	1
34.....	06232	Shaft .....		1
35.....	06233	Threading Dial Shaft .....		1
38.....	06236	Gear .....	32T	1
39.....	06237	Washer .....		2
40.....	06238	Bar .....		1
41.....	06239	Screw .....		1
42.....	06240	Washer .....		1
43.....	06241	Washer .....		1
44.....	06242	Washer .....		1
50.....	06548	Oil Sight Collar .....		1
51.....	06459	Oil Sight Collar .....		1
52.....	06551	Oil Sight .....		1
53.....	06553	Knob .....		2
54.....	06554	Plug"A" .....		1
55.....	06555	Plug"B" .....		1
56.....	06556	Handle .....		1

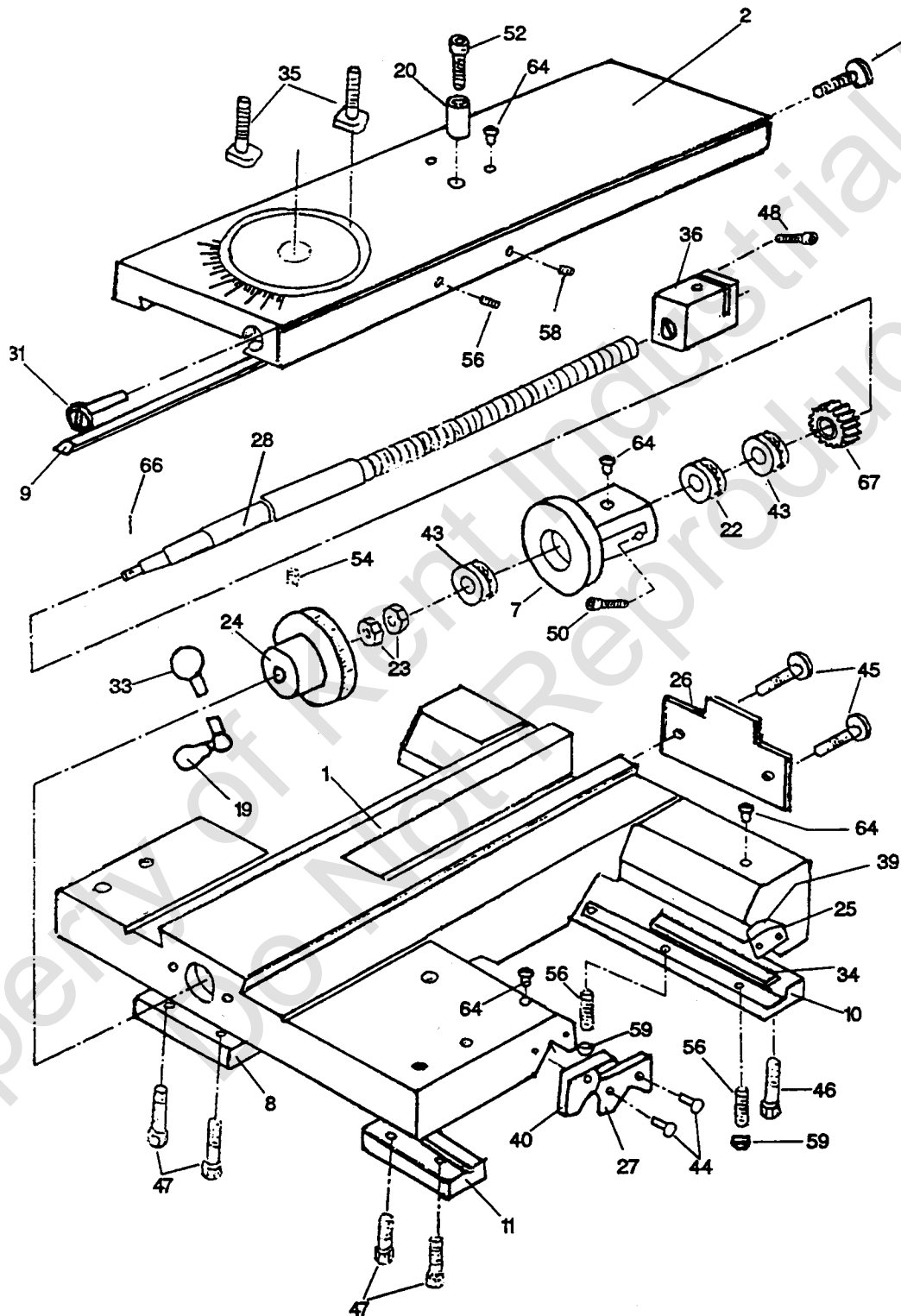
57.....	06257 .....	Spring .....	1
58.....	06258 .....	Spring .....	1
59.....	06260 .....	Key .....	1
60.....	TS-1502031 .....	Hex Socket Cap Screw .....	M5X12 .....2
62.....	TS-1503031 .....	Hex Socket Cap Screw .....	M6X12 .....4
63.....	TS-1503041 .....	Hex Socket Cap Screw .....	M6X16 .....1
64.....	TS-1503061 .....	Hex Socket Cap Screw .....	M6×25.....3
65.....	TS-1504061 .....	Hex Socket Cap Screw .....	M8×30 .....4
66.....	TS-1504101 .....	Hex Socket Cap Screw .....	M8×50 .....1
67.....	GHB1340-A67 .....	Screw .....	M5×16 .....3
68.....	GHB1340-A68 .....	Screw .....	M6×12 .....2
69.....	GHB1340-A69 .....	Screw .....	M6×10 .....2
70.....	TS-1522011 .....	Set Screw .....	M5×6 .....1
71.....	TS-1523011 .....	Set Screw .....	M6×6 .....3
72.....	TS-1523031 .....	Set Screw .....	M6×10 .....1
73.....	TS-1522051 .....	Set Screw .....	M5×16 .....3
74.....	GHB1340-A74 .....	Set Screw .....	M6×35 .....1
75.....	TS-1523031 .....	Set Screw .....	M6×10 .....1
77.....	GHB1340-A77 .....	Screw .....	M6×12 .....1
78.....	GHB1340-A78 .....	Pin .....	3×25 .....1
79.....	GHB1340-A79 .....	Pin .....	5×20 .....2
80.....	GHB1340-A80 .....	Pin .....	5×30 .....2
81.....	GHB1340-A81 .....	Pin .....	5×32 .....1
82.....	GHB1340-A82 .....	Pin .....	5×25 .....3
83.....	GHB1340-A83 .....	Pin .....	8n6×12 .....2
84.....	GHB1340-A84 .....	Oiler .....	8 .....3
85.....	GHB1340-A85 .....	Washer .....	8×1.6×2.5 .....1
86.....	GHB1340-A86 .....	Lock Washer .....	1 .....1
87.....	TS-1540031 .....	Hex Nut .....	M5 .....3
88.....	TS-1540041 .....	Hex Nut .....	M6 .....2
89.....	TS-1540061 .....	Hex Nut .....	M8 .....1
90.....	GHB1340-A90 .....	Rivet .....	2×5 .....8
91.....	GHB1340-A91 .....	Rivet .....	3×8 .....1
92.....	GHB1340-A92 .....	O-Ring .....	20×2.4 .....1
95.....	GHB1340-A95 .....	Key .....	A5×18 .....1
96.....	GHB1340-A96 .....	Steel Ball .....	.....2
97.....	GHB1340-A97 .....	Washer .....	10 .....1
98.....	GHB1340-A98 .....	Plug .....	M10×1 .....1

# Top Slide, Tool Post, Saddle, and Cross Slide





# Top Slide, Tool Post, Saddle, and Cross Slide

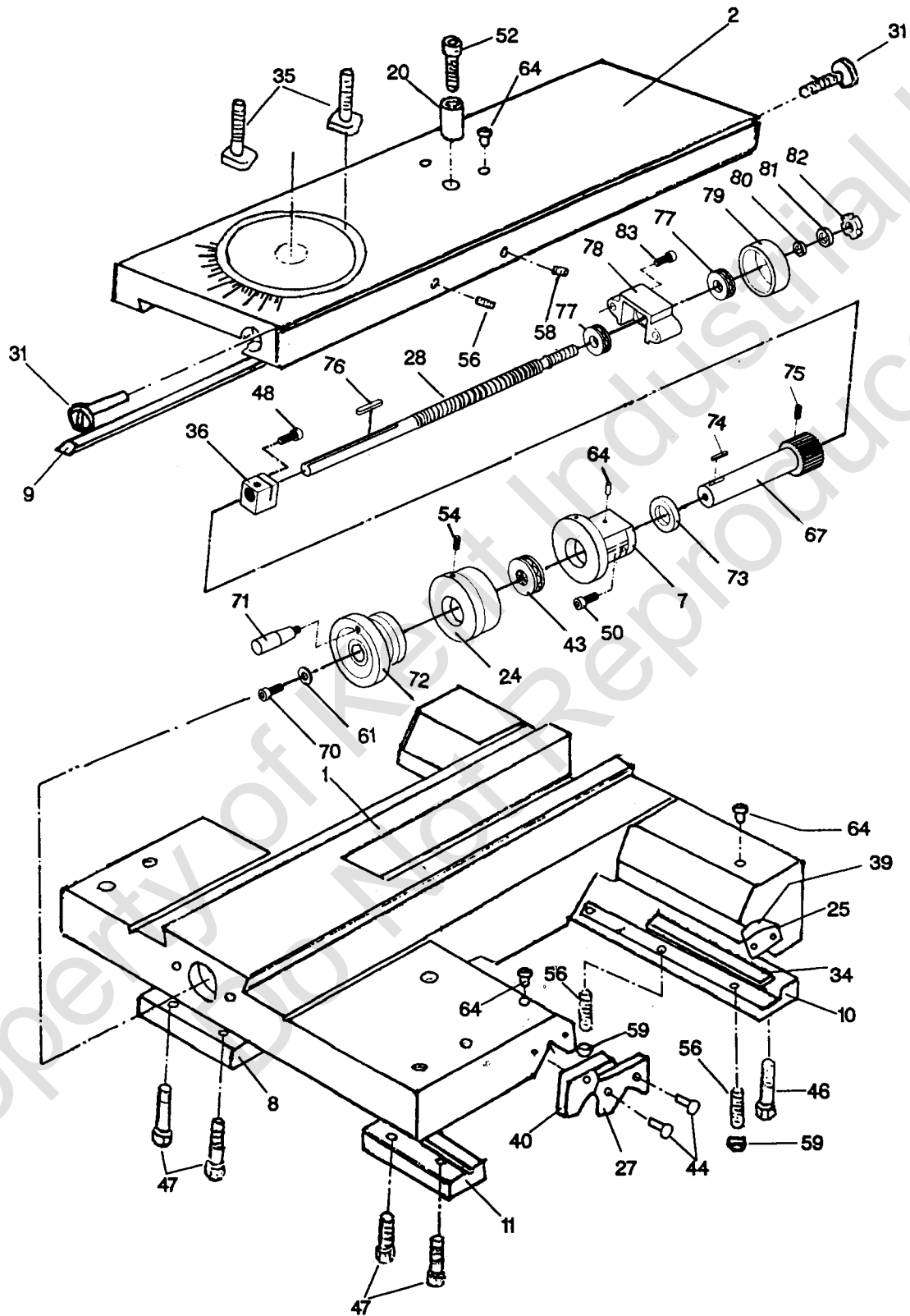


## Top Slide, Tool Post, Saddle, and Cross Slide

Index No.	Part No.	Description	Size	Qty.
1.....	07101	Saddle .....		1
2.....	07102	Cross Slide .....		1
3.....	07103	Swivel Slide .....		1
4.....	07104	Top Slide .....		1
5.....	07111	Collar .....		1
6.....	07117	Gib .....		1
7.....	07120	Hub .....		1
8.....	07123	Strip .....		1
9.....	07131	Gib .....		1
10.....	07132	Strip .....		1
11.....	07141	Front Strip .....		1
12.....	07205	Screw .....		1
13.....	07206	Handle Base .....		1
14.....	07207	Handle Shaft .....		1
15.....	07209	Stop .....		1
16.....	07210	Screw .....		1
17.....	07212	Index Ring .....		1
18.....	07213	Lever .....		1
19.....	07214	Lever .....		2
20.....	07216	Collar .....		1
22.....	07219	Washer .....		1
23.....	07221	Nut .....		4
24.....	07221	Index Ring .....		1
25.....	07224	Plate .....		2
26.....	07225	Plate w/ Wiper .....		1
27.....	07227	Plate .....		2
28.....	07229	Screw .....		1
29.....	07233	Washer .....		1
30.....	07234	Post Base .....		1
31.....	07236	Gib Adjusting Screw .....		2
32.....	07237	Gib Adjusting Screw .....		2
33.....	07238	Lever .....		1
34.....	07239	Gib Strip .....		2
35.....	07240	T-Bolt .....		1
36.....	07415	Block .....		1
37.....	07430	Nut .....		1
38.....	07508	Knob .....		1
39.....	07526	Wiper .....		2
40.....	07528	Wiper .....		1
42.....	GHB1340-42T	Bearing .....	8101 .....	2
43.....	GHB0340-43T	Bearing .....	8102 .....	2
44.....	GHB1340-44T	Screw .....	M4×12 .....	2
45.....	GHB1340-45T	Screw .....	M8×12 .....	2
46.....	GHB1340-46T	Screw .....	M8×20 .....	1
47.....	GHB1340-47T	Screw .....	M8×20 .....	4
48.....	TS-1503041	Hex Socket Cap Screw .....	M6×16 .....	1
49.....	TS-1503051	Hex Socket Cap Screw .....	M6×20 .....	2
50.....	TS-1503061	Hex Socket Cap Screw .....	M6×25 .....	2

52.....	TS-1504031 .....	Hex Socket Cap Screw .....	M8×16 .....	2
53.....	TS-1523011 .....	Set Screw .....	M6×6 .....	1
54.....	TS-1523021 .....	Set Screw .....	M6×8 .....	1
55.....	TS-1523031 .....	Set Screw .....	M6×10 .....	3
56.....	TS-1523051 .....	Set Screw .....	M6×16 .....	5
57.....	TS-1524011 .....	Set Screw .....	M8×8 .....	1
58.....	TS-1524021 .....	Set Screw .....	M8×10 .....	1
59.....	TS-1540041 .....	Hex Nut .....	M6 .....	4
60.....	TS-1540061 .....	Hex Nut .....	M8 .....	2
61.....	GHB1340-61T .....	Washer .....	8 .....	2
62.....	GHB1340-62T .....	Screw .....	M10×40 .....	8
63.....	GHB1340-63T .....	Spring .....	0.6×4×18 .....	1
64.....	GHB1340-64T .....	Oil Ball .....	8 .....	6
66.....	GHB1340-66T .....	Pin .....	3×16 .....	2
67.....	GHB1340-67T .....	Pin .....	3×20 .....	1
69.....	GHB1340-69T .....	Ball Bearing .....	.....	2

# Saddle and Cross Slide Assembly(Telescoping Lead Screw)



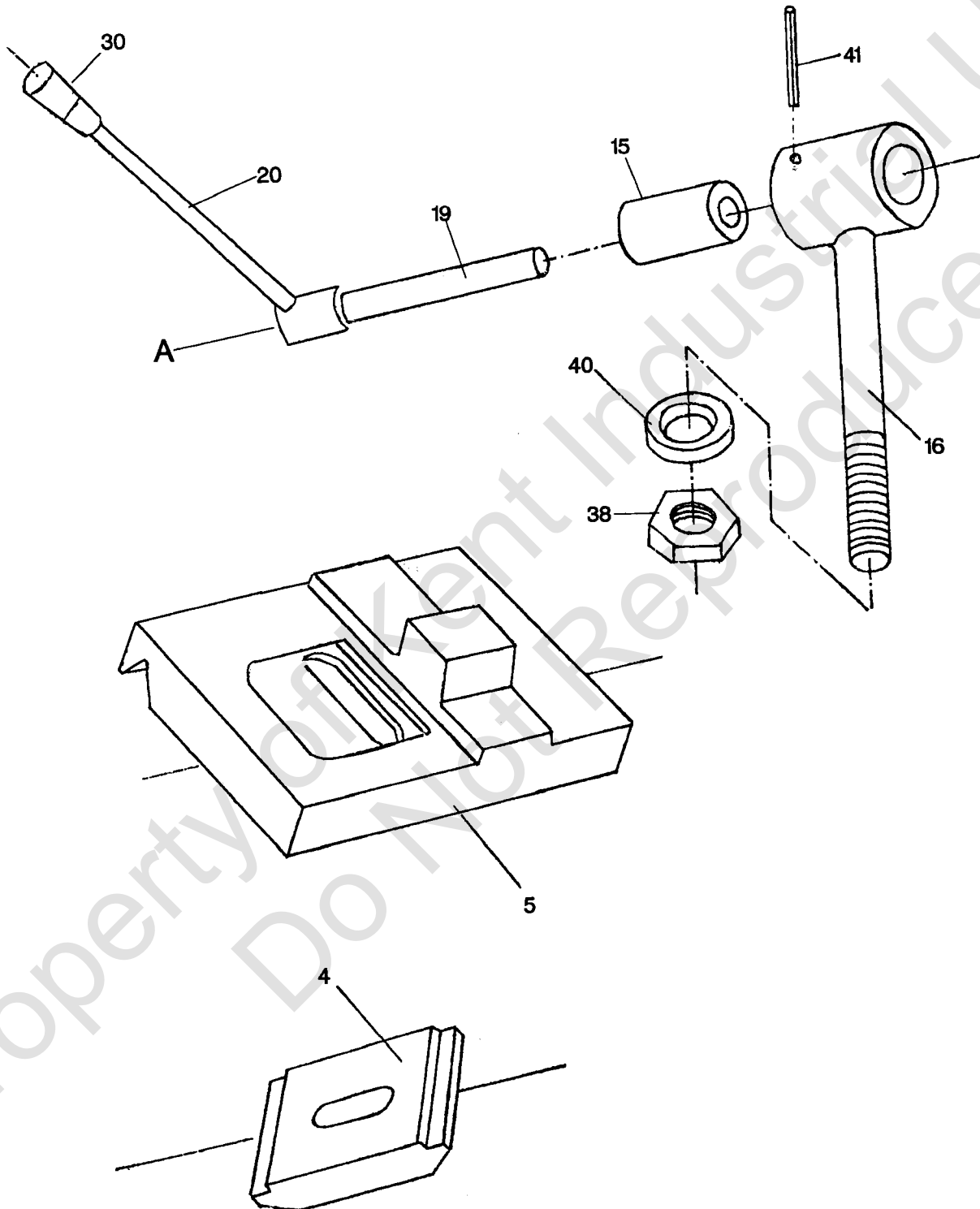
## Saddle and Cross Slide Assembly(Telescoping Lead Screw)

Index No.	Part No.	Description	Size	Qty.
1.....	07101 .....	Saddle .....		1
2.....	07102 .....	Cross Slide .....		1
7.....	07120N .....	Hub .....		1
8.....	07123 .....	Strip .....		1
9.....	07131 .....	Gib .....		1
10.....	07132 .....	Strip .....		1
11.....	07141 .....	Front Strip .....		1
12.....	07205 .....	Screw .....		1
20.....	07216 .....	Collar .....		1
24.....	07222N .....	Index Ring .....		1
25.....	07224 .....	Plate .....		1
27.....	07227 .....	Plate .....		1
28.....	07229N .....	Screw .....		2
31.....	07236 .....	Gib Adjsting Screw .....		1
34.....	07239 .....	Gib Strip .....		1
35.....	07240 .....	T-Bolt .....		1
36.....	07415 .....	Block .....		1
39.....	07526 .....	Wiper .....		1
40.....	07528 .....	Wiper .....		1
43.....	GHB1340-43T .....	Bearing .....	8102 .....	1
44.....	GHB1340-44T .....	Screw .....	M4×12 .....	1
46.....	GHB1340-46T .....	Screw .....	M8×20 .....	1
47.....	GHB1340-47T .....	Screw .....	M8×20 .....	1
48.....	TS-1503041 .....	Hex Socket Cap Screw .....	M6×16 .....	3
50.....	TS-1503061 .....	Hex Socket Cap Screw .....	M6×25 .....	4
52.....	TS-1504031 .....	Hex Socket Cap Screw .....	M8×16 .....	1
54.....	TS-1523021 .....	Set Screw .....	M6×8 .....	1
56.....	TS-1523051 .....	Set Screw .....	M6×16 .....	5
58.....	TS-1524021 .....	Set Screw .....	M8×10 .....	1
59.....	TS-1540041 .....	Hex Nut .....	M6 .....	1
61.....	07529 .....	Washer .....		1
64.....	GHB1340-64T.....	Oil Ball.....	8 .....	6
67.....	07530 .....	Gear Shaft .....		1
70.....	GHB1340-70T .....	Hex Socket Cap Screw .....	M8×16 .....	1
71.....	07531 .....	Lever .....		1
72.....	07532 .....	Compound Handle .....		1
73.....	07533 .....	Spacer .....		1
74.....	GHB1340-74T .....	Key .....	4×4×20.....	1
75.....	GHB1340-75T .....	Screw .....	M3×6 .....	1
76.....	GHB1340-76T .....	Key .....	5×5×30.....	1
77.....	GHB1340-77T .....	Thrust Bearing .....	51101 .....	2
78.....	07538 .....	Bearing Housing .....		1
79.....	07539 .....	Bearing Dust Cover .....		1
80.....	07540 .....	Washer .....		1
81.....	07541 .....	Star Washer .....		1
82.....	07542 .....	Locking Nut .....		1
83.....	GHB1340-83T.....	Hex Socket Cap Screw .....	M8×25.....	2

This technical drawing is an exploded view of a mechanical assembly, likely a pump or a valve. The components are numbered as follows:

- 1**: Main housing or base block.
- 2**: A circular flange or cover plate.
- 3**: A circular component, possibly a diaphragm or a valve seat.
- 4**: A small pin or clip.
- 5**: A small circular component, possibly a seal or a washer.
- 6**: A small pin or clip.
- 7**: A long, threaded rod or screw.
- 8**: A long, threaded rod or screw.
- 9**: A circular component, possibly a diaphragm or a valve seat.
- 10**: A small pin or clip.
- 11**: A small pin or clip.
- 12**: A long, threaded rod or screw.
- 13**: A small pin or clip.
- 14**: A small pin or clip.
- 15**: A small pin or clip.
- 16**: A small pin or clip.
- 17**: A small pin or clip.
- 18**: A small pin or clip.
- 19**: A small pin or clip.
- 20**: A small pin or clip.
- 21**: A small pin or clip.
- 22**: A small pin or clip.
- 23**: A small pin or clip.
- 24**: A small pin or clip.
- 25**: A small pin or clip.
- 26**: A small pin or clip.
- 27**: A small pin or clip.
- 28**: A small pin or clip.
- 29**: A small pin or clip.
- 30**: A small pin or clip.
- 31**: A small pin or clip.
- 32**: A small pin or clip.
- 33**: A small pin or clip.
- 34**: A small pin or clip.
- 35**: A small pin or clip.
- 36**: A small pin or clip.
- 37**: A small pin or clip.
- 38**: A small pin or clip.
- 39**: A small pin or clip.
- 40**: A small pin or clip.
- 41**: A small pin or clip.
- 42**: A small pin or clip.
- 43**: A small pin or clip.
- 44**: A small pin or clip.
- 45**: A small pin or clip.
- 46**: A small pin or clip.

# Tailstock Assembly

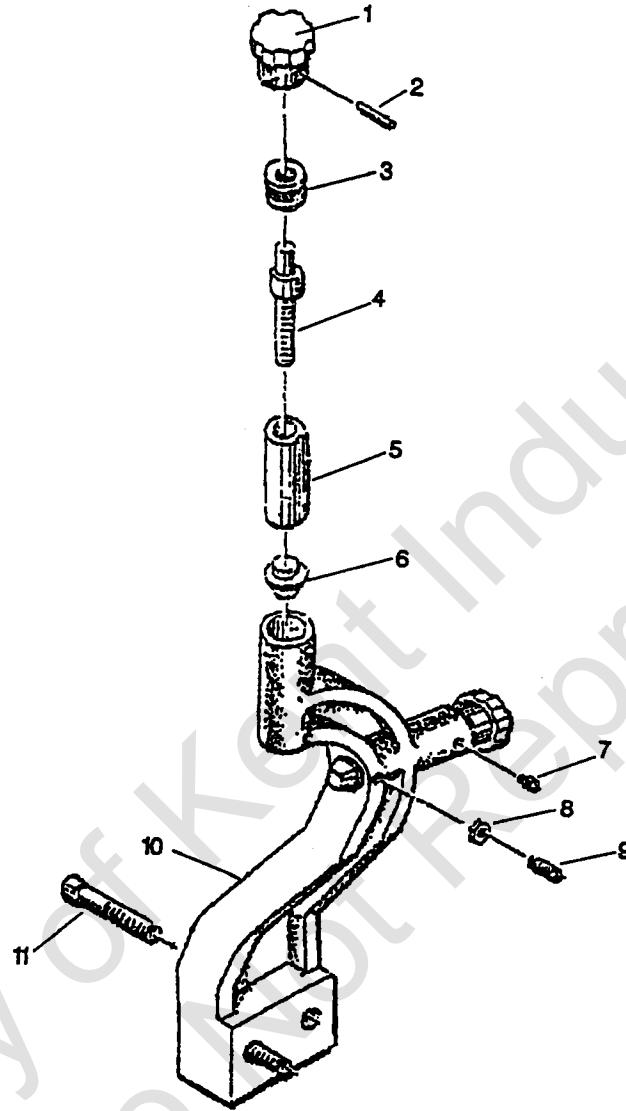


## Tailstock Assembly

Index No.	Part No.	Description	Size	Qty.
1.....	08101 .....	Casting .....		1
2.....	08102 .....	Flange Cover .....		1
3.....	08103 .....	Hanwheel .....		1
4.....	08104 .....	Clamp Plate .....		1
5.....	08105 .....	Base .....		1
	08201 .....	Live Center .....	MT-3	1
7.....	08202 .....	Quill .....		1
8.....	08203 .....	Screw .....		1
9.....	08204 .....	Washer .....		1
10.....	08205 .....	Screw .....		1
11.....	08206 .....	Screw .....		1
12.....	08207 .....	Screw .....		1
13.....	08208 .....	Shaft .....		1
14.....	08209 .....	Screw .....		2
15.....	08211 .....	Collar .....		1
16.....	0812 .....	Screw .....		1
19.....	08213 .....	Shaft .....		1
20.....	08214 .....	Lever .....		1
21.....	08401 .....	Nut .....		1
22.....	08402 .....	Index Ring .....		1
23.....	08403 .....	Pivot Block .....		1
26.....	08501 .....	Handle .....		1
29.....	GHB1340-29TS .....	Knob .....	M8×40	1
30.....	GHB1340-30TS .....	Knob .....	M10×50	1
31.....	TS-1501031 .....	Hex Socket Cap Screw .....	M4×10	3
32.....	TS-1503041 .....	Hex Socket Cap Screw .....	M6×16	4
33.....	TS-1522061 .....	Set Screw .....	M5×20	1
34.....	TS-1523031 .....	Set Screw .....	M6×10	1
35.....	GHB1340-35TS .....	Set Screw .....	M10×45	3
36.....	GHB1340-35TS .....	Screw .....	M8×35	1
37.....	TS-1540061 .....	Hex Nut .....	M8	1
38.....	TS-1540081 .....	Hex Nut .....	M12	1
39.....	GHB1340-39TS .....	Key .....	4×15	1
40.....	GHB1340-40TS .....	Washer .....	B12	1
41.....	GHB1340-41TS .....	Pin .....	5×24	1
42.....	GHB1340-42TS .....	Bearing .....	8102	1
46.....	GHB1340-43TS .....	Oil Ball .....	8	3

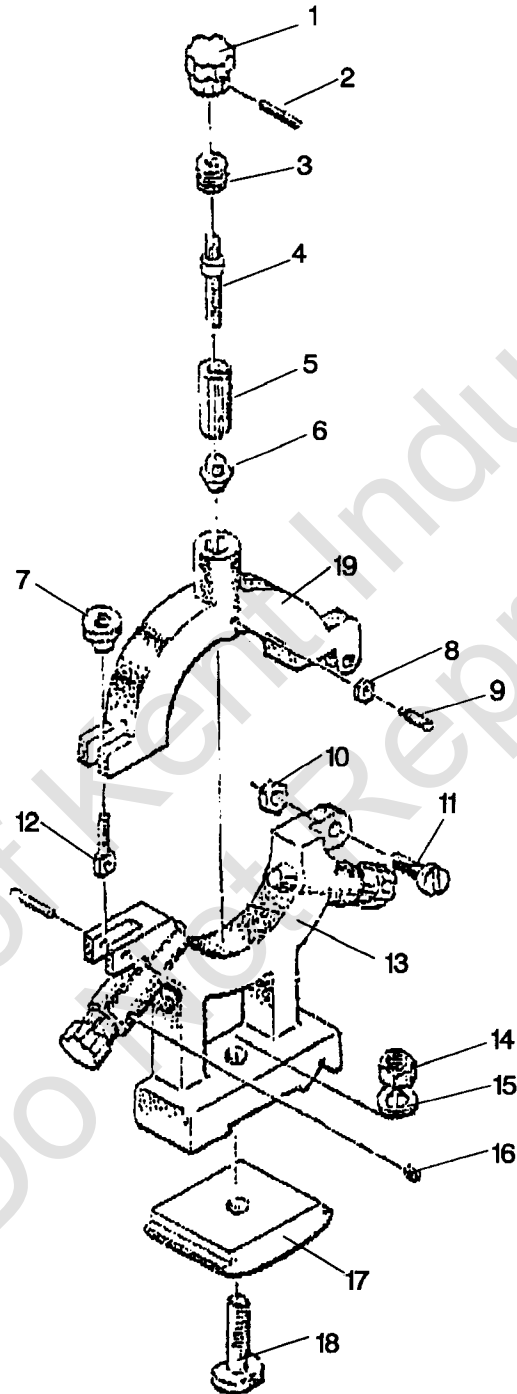


## Follow Rest



1.....	GHB1340-1FR .....	Knob .....	2
2.....	GHB-1340-2FR .....	Pin .....	3×18 .....
3.....	10208 .....	Bushing .....	2
4.....	10204 .....	Screw .....	2
5.....	10201 .....	Sleeve .....	2
6.....	10401 .....	Brass Finger .....	2
7.....	TS-152301 .....	Set Screw .....	M6×6 .....
8.....	TS-1540041 .....	Nut .....	M6 .....
9.....	TS-152306 .....	Set Screw .....	M6×20 .....
10.....	10104 .....	Base Casting .....	1
11.....	TS-150409 .....	Hex Socket Cap Screw .....	M8×45 .....

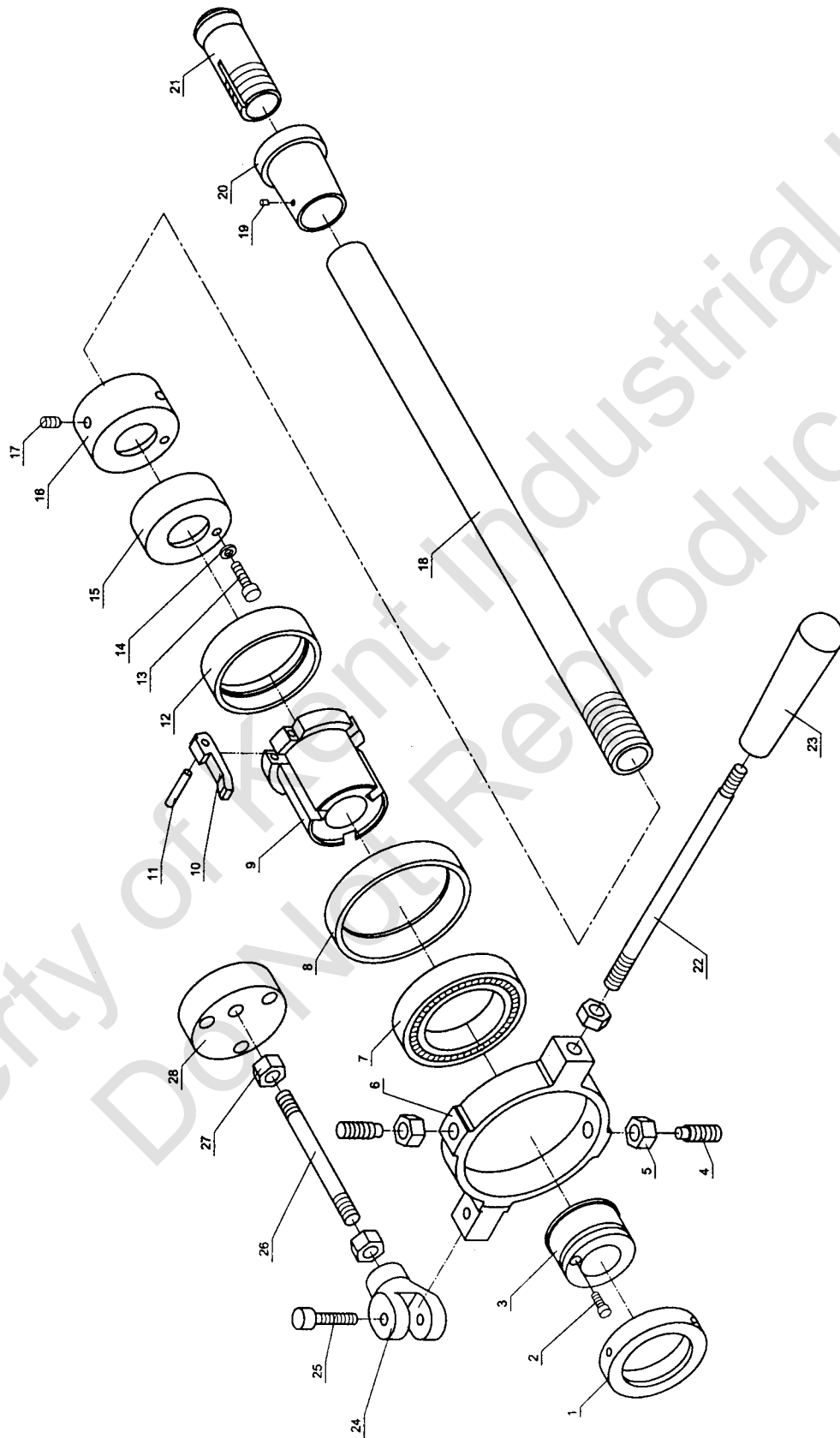
# Steady Rest



## Steady Rest

Index No.	Part No.	Description	Size	Qty.
1.....	GHB1340-1FR .....	Knob .....		3
2.....	GHB-1340-2FR .....	Pin .....	3×18 .....	3
3.....	10203 .....	Bushing .....		3
4.....	10204 .....	Screw .....		3
5.....	10201 .....	Sleeve .....		3
6.....	10401 .....	Brass Finger .....		3
7.....	10205 .....	Lock Knob .....		1
8.....	TS-1540041 .....	Nut .....	M6 .....	3
9.....	TS-152306 .....	Set Screw .....	M6×20 .....	3
10.....	TS-1540041 .....	Nut .....	M6 .....	1
11.....	GHB1340-11SR .....	Bolt .....	M6×30 .....	1
12.....	10206 .....	Pivot Bolt .....		1
13.....	10102 .....	Base Casting .....		1
14.....	TS-1540081 .....	Nut .....	M12 .....	1
15.....	TS-155008 .....	Flat Washer .....	M12 .....	1
16.....	TS-152301 .....	Set Screw .....	M6×6 .....	3
17.....	10103 .....	Clamp Pad .....		1
18.....	GH1340-18SR .....	Clamp Screw .....		1
19.....	10101 .....	Top Casting .....		1

# Quick Chang Collet Assembly



## Quick Chang Collet Assembly

Index No.	Part No.	Description	Size	Qty
1	GH1340A-13702	Lock Nut		1
2	GB70	Hex Socket Cap Screw	M5x20	1
3	GH1340A-13701	Adjusting Nut		1
4	GB79	Set Screw	M12x30	2
5	GB6170	Hex Nut	M12	2
6	GH1340A-13101	Operation Ring		1
7	BB6013Z	Ball Bearing	65X100X18	1
8	GH1340A-13704	Bearing Support		1
9	GH1340A-13703	Sliding Sleeve		1
10	GH1340A-13705A	Pressing Lever		3
11	GB119	Fixed Support	6X40	3
12	GH1340A-13706	Sleeve		1
13	GB70	Hex Socket Cap Screw	M6x35	1
14	GB93	Spring Lock Washer	6	1
15	GH1340A-13707	Connecting Sleeve		1
16	13702	Connecting Sleeve		1
17	GB79	Set Screw	M8X16	3
18	13701	Pulling Rod		1
19	GH1340A-13710	Fixed Support		1
20	GH1340A-13711	Sleeve		1
21	5C	Round Collet		1
22	GH1340A-13712	Lever		1
23	GH1340A-13501	Handle		1
24	GH1340A-13102	Joint Block		1
25	GB70	Hex Socket Cap Screw	M8X45	1
26	13703	Stud		1
27	GB6170	Nut	M12	3
28	02748	Rear Cover		1