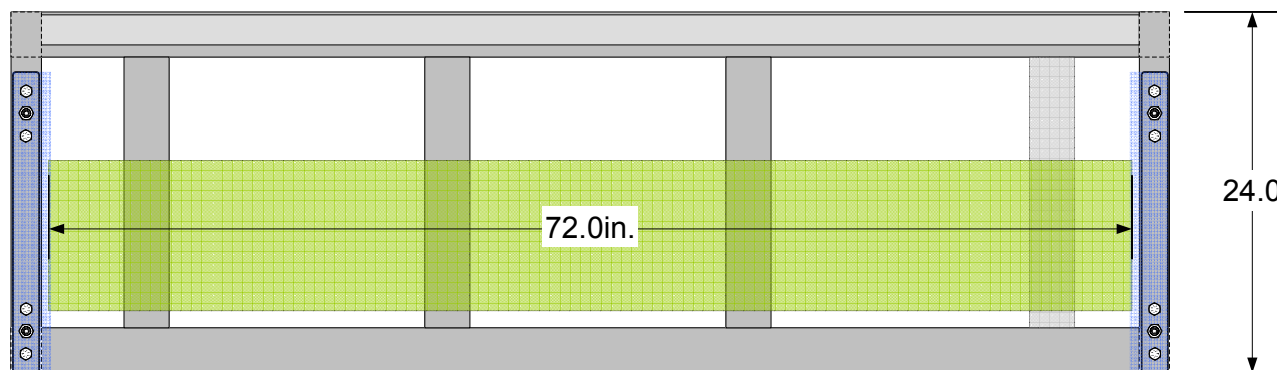


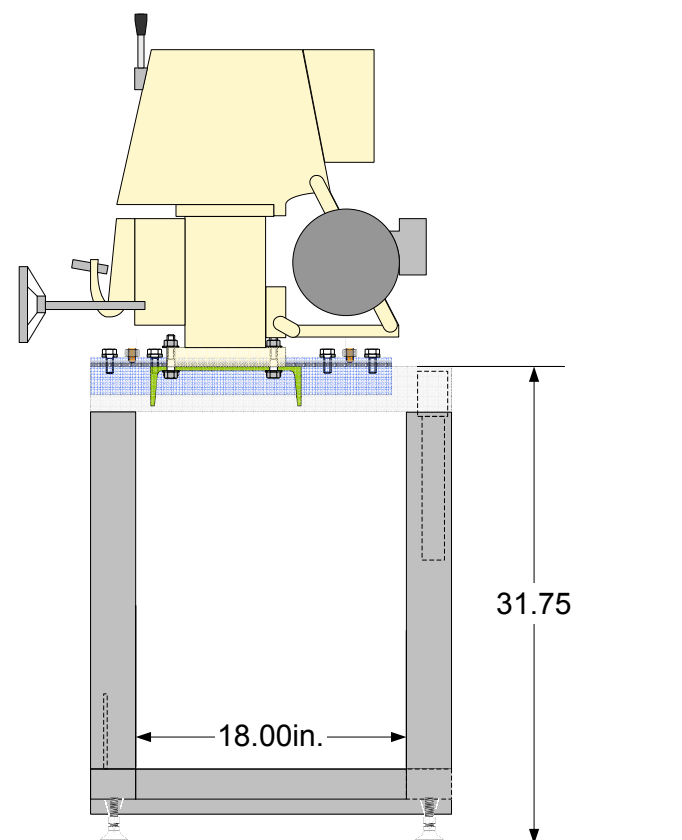
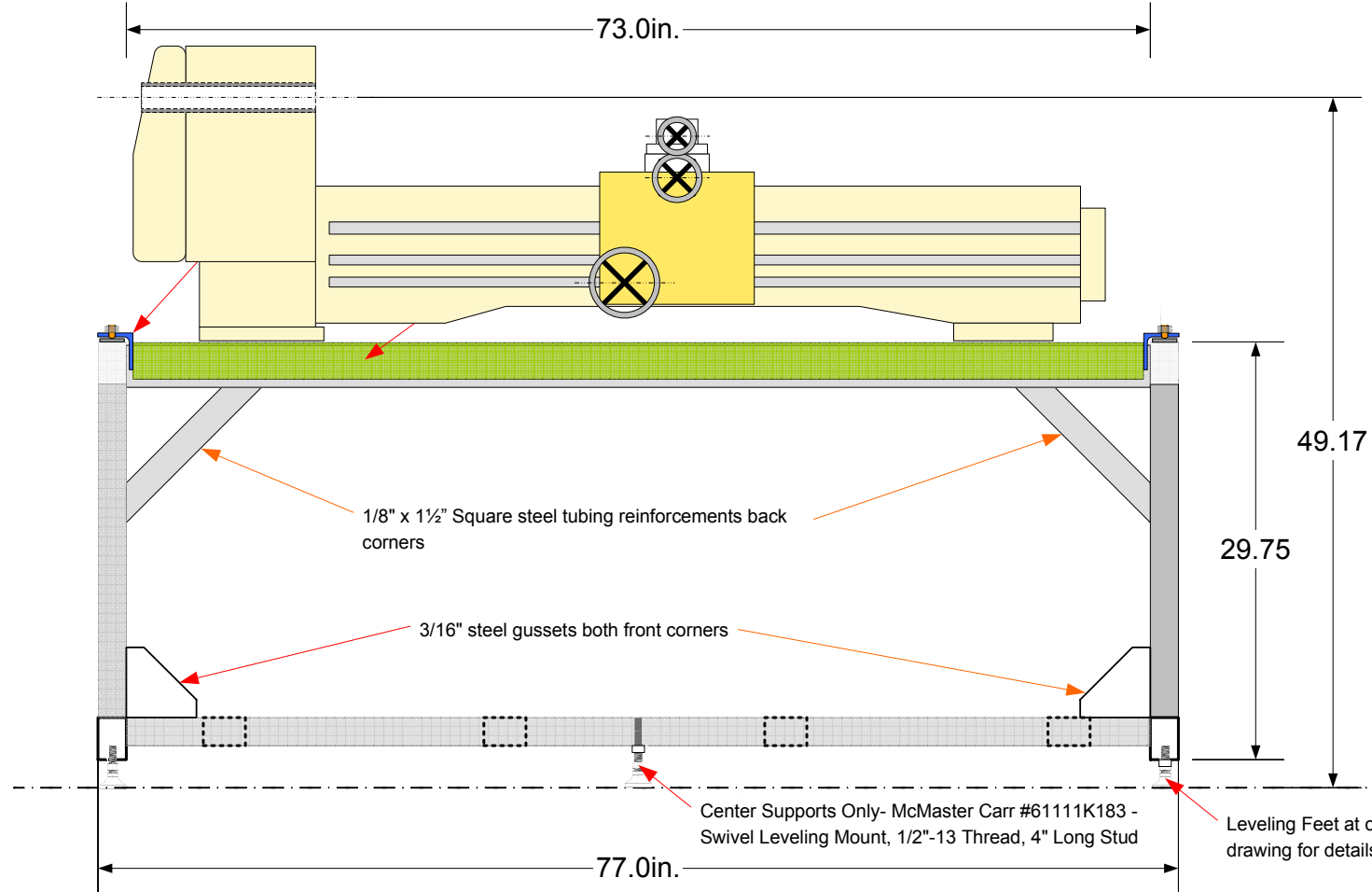
Note: All dimensions are approximate & in millimeters.

PM1340 Metal Lathe
The Best & Jacobs Full Custom Edition

Best Services - Bespoke Wood & Metal David P. Best, designer	Sept. 2016 Rev 1
---	---------------------



All stand components 2 x 3 x 1/8" rectangular hot-rolled steel w welded joints unless otherwise noted



PM1340 Metal Lathe
The Best & Jacobs Full Custom Edition
Best Services - Bespoke Wood & Metal
David P. Best, designer

Sept. 2016
Rev 1

1/2"-20 Hex-bolts

Leveling Set Screws
McMaster Carr #92765A647 -
Easy-Adjust Oval Point Set
Screw, Alloy Steel, 1/2"-20
Thread, 3/4" Long

McMaster Carr #90521A236 -
Grade 2H Steel Extra-Wide
Hex Nut 1/2"-20 Thread Size,
7/8" Wide, 31/64" High Welded
to Base

1/2"-20 oversized nut
welded to Angle for
set screw

1/2"-20 Hex-bolt

1/2"-20 Hex-socket set screw for
leveling - all 4 corners

2.25" x 1/4" Angle

Welded Joint

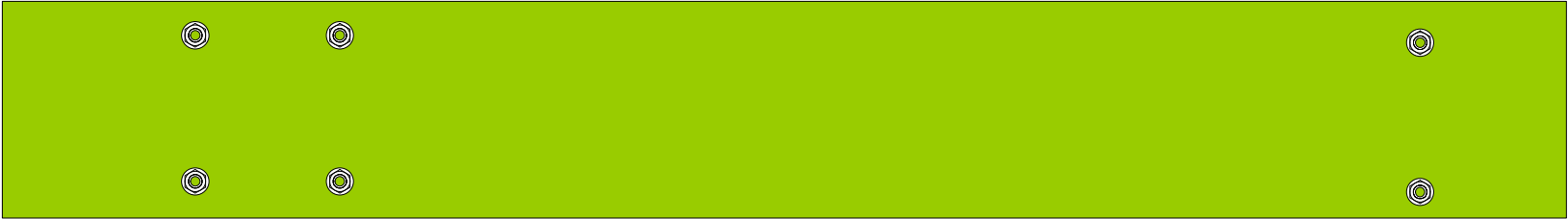
1/4" CR Plate welded to leg
drilled/tapped for 1/2"-20 securing
Hex-bolts in 8 locations

10" x 1/4" HR Channel -
Lathe bolted to this platform

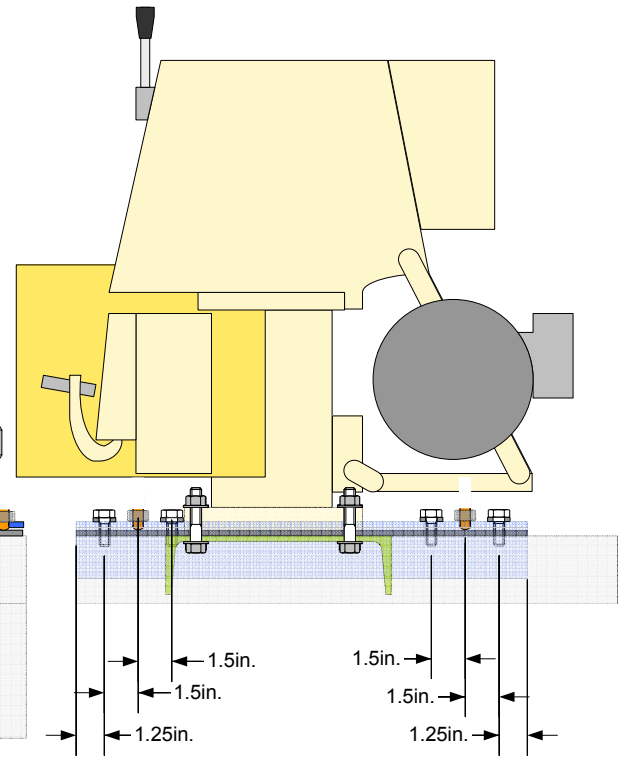
Leveling Feet - Both Ends -
McMaster Carr #61111K167 -
Swivel Leveling Mount, 1/2"-20
Thread, 2" Long Bolt, 4000 lb Load

Lathe Stand Leveling Details

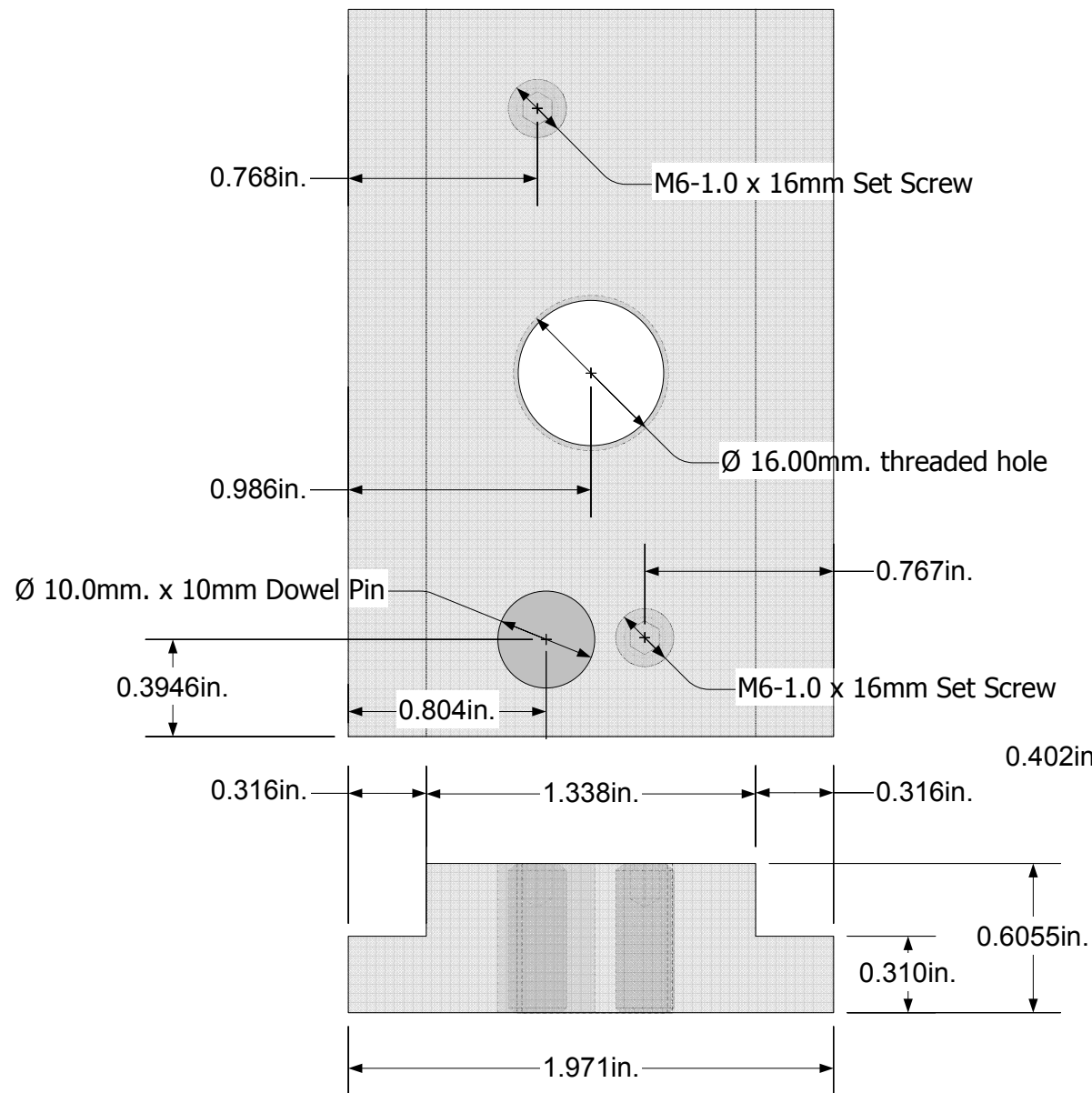
PM1340 Metal Lathe The Best & Jacobs Full Custom Edition	
Best Services - Bespoke Wood & Metal David P. Best, designer	Sept. 2016 Rev 1



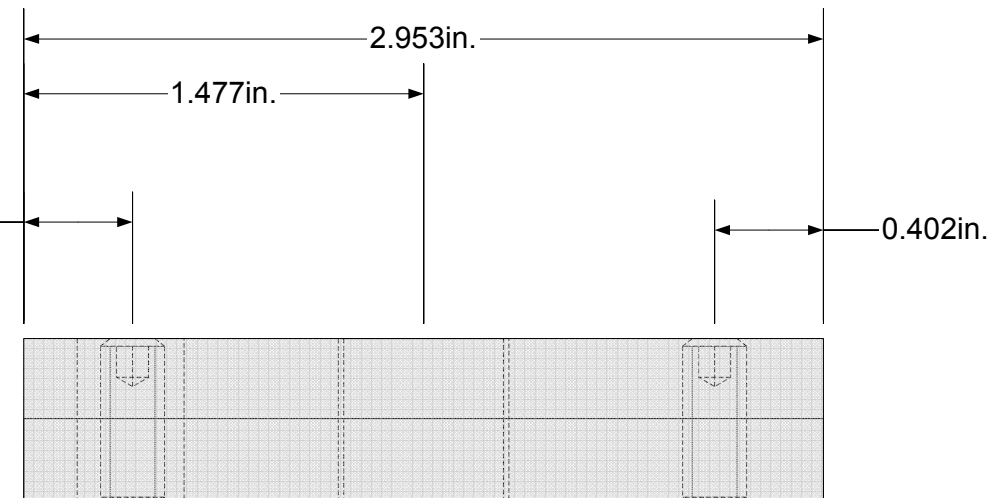
Lathe Mounting Fasteners - Grade 5 Steel
Serrated Flange-Head Cap Screw, 1/2"-13 Thread,
2-1/2" Long & Flange-Head Hex Nuts



Lathe Mounting Details



Precision Matthews PM-1340 Lathe
Compound T-Nut
as installed on standard machine

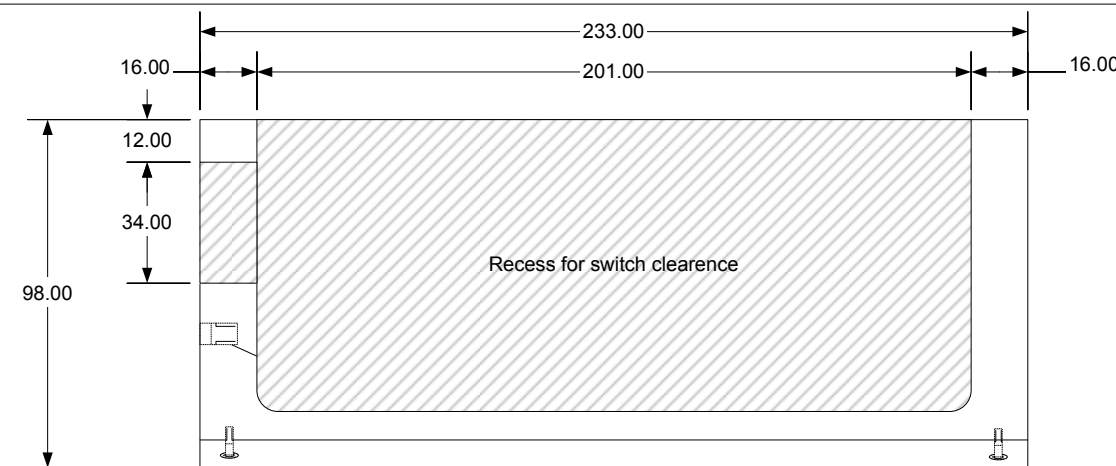


PM1340 Metal Lathe
The Best & Jacobs Full Custom Edition

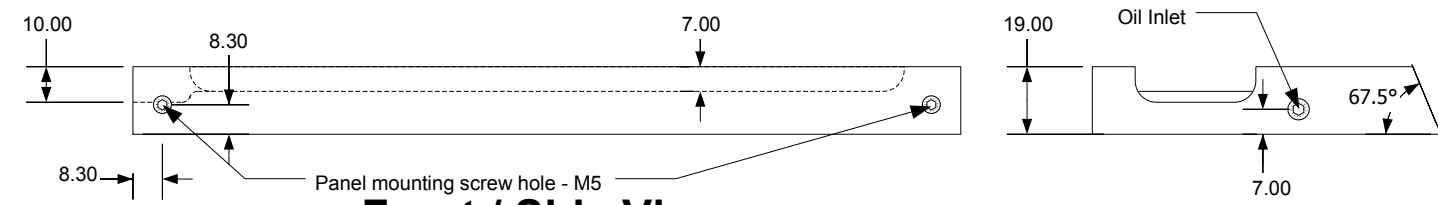
Best Services - Bespoke Wood & Metal
David P. Best, designer

Sept. 2016
Rev 1

Bijur single-point oil distribution plate

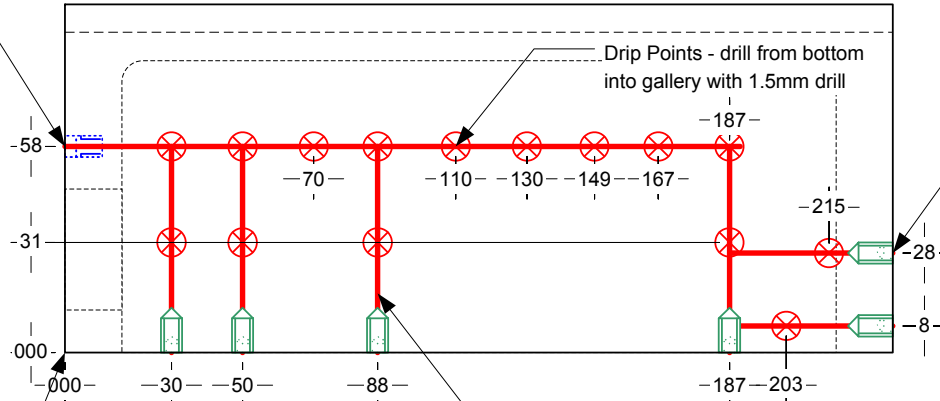


Top View



Front / Side View

- Parts List for PM1340 Oil Distribution System
- Bijur Manual Oil Distribution Pump
- CTA-8 Type Hand-Pull (Left) Manual Lubricators Bijur 8cc
 - Available from Supra Machine Tool, Inc.
 - 2320 E Valencia Dr Fullerton, CA 92831
 - Tel: 714-871-5558
 - <http://www.ebay.com/itm/CTA-8-Type-Hand-Pull-Left-Manual-Lubricators-Bijur>
- Oil Distributuion hose: Bijur pump to oil tray
- PPST30 24" High Pressure Flexible Hose (600mm) for Lubrication System 4mm B
 - Available from Supra Machine Tool, Inc.
 - 2320 E Valencia Dr Fullerton, CA 92831
 - Tel: 714-871-5558
 - <http://www.ebay.com/itm/PPST30-24-High-Pressure-Flexible-Hose-600mm-for>
- Brass Elbow - 8mmF/8mmM
- Trico FE-1011M
 - Available from Summit Pump, Inc
 - 3168 S. Pinetree Rd
 - Oneida, WI 54155
 - Ph: 920-869-4800
 - <http://www.trico-oilers.com/Street-Elbow-90-Degree-M8x10-x-M8x10-Trico-FE>
- 0.196" Diameter, 12" long Aircraft Extension Drill Bit
- <http://www.mscdirect.com/product/details/83240325>
- 5mm Drill Bit jobbers length
- 6mm tap & 5.2mm pilot drill
- 8mm tap and 6.9mm pilot drill



Bottom View

All dimensions in millimeters unless otherwise noted.

PM1340 Metal Lathe The Best & Jacobs Full Custom Edition	
Best Services - Bespoke Wood & Metal David P. Best, designer	Sept. 2016 Rev 1

