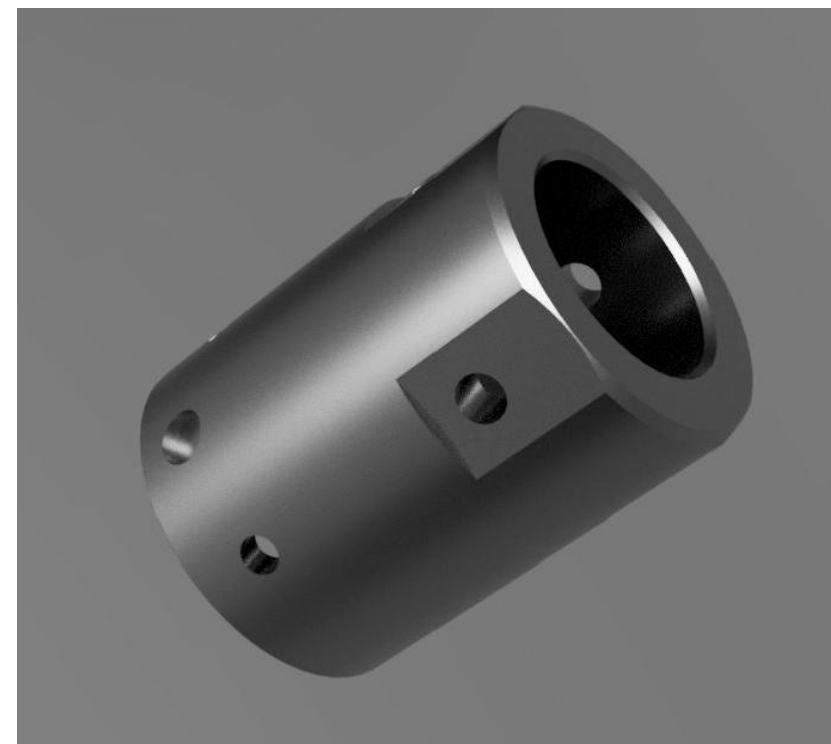
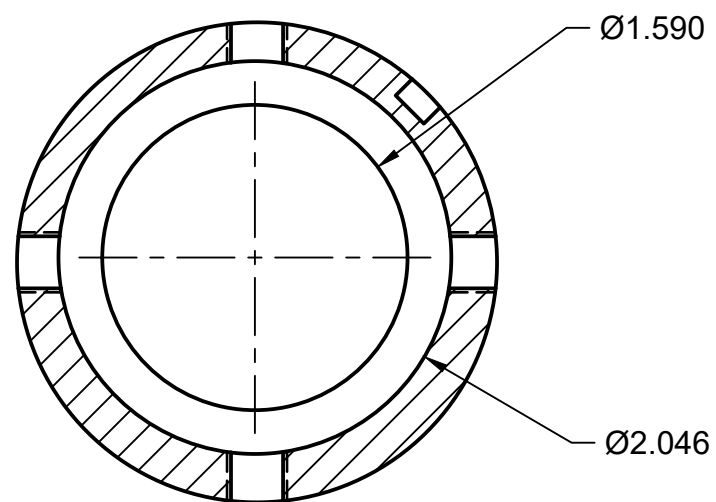


SECTION A-A



**Notes:**

- Spider made of 4140 chrome moly heavy wall tubing
- Determine actual bore diameter needed to fit specific lathe
- Setscrews for workpiece holding  $\frac{3}{8}$ " - 24 x 1.25" log (McMaster #91375A650); add brass tips for small diameter workpieces
- Setscrews for spindle connection use  $\frac{5}{16}$ "-24 x  $\frac{5}{16}$ " long, nonmarring tip (McMaster #94495A271)
- Add socket for magnet as needed for tachometer, locate as necessary to fit configuration of pickup
- Chamfer OD and bores and smooth to eliminate sharp edges



SECTION B-B

		PROJECT		
		PM1340GT Upgrades		
		TITLE		
		Lathe Spider		
		M. Jacobs concept		
APPROVED		SIZE	CODE	DWG NO
CHECKED		B		10-15-17- I
DRAWN	Alan H	10/15/2017	SCALE 1:1	WEIGHT
			SHEET 1/1	