

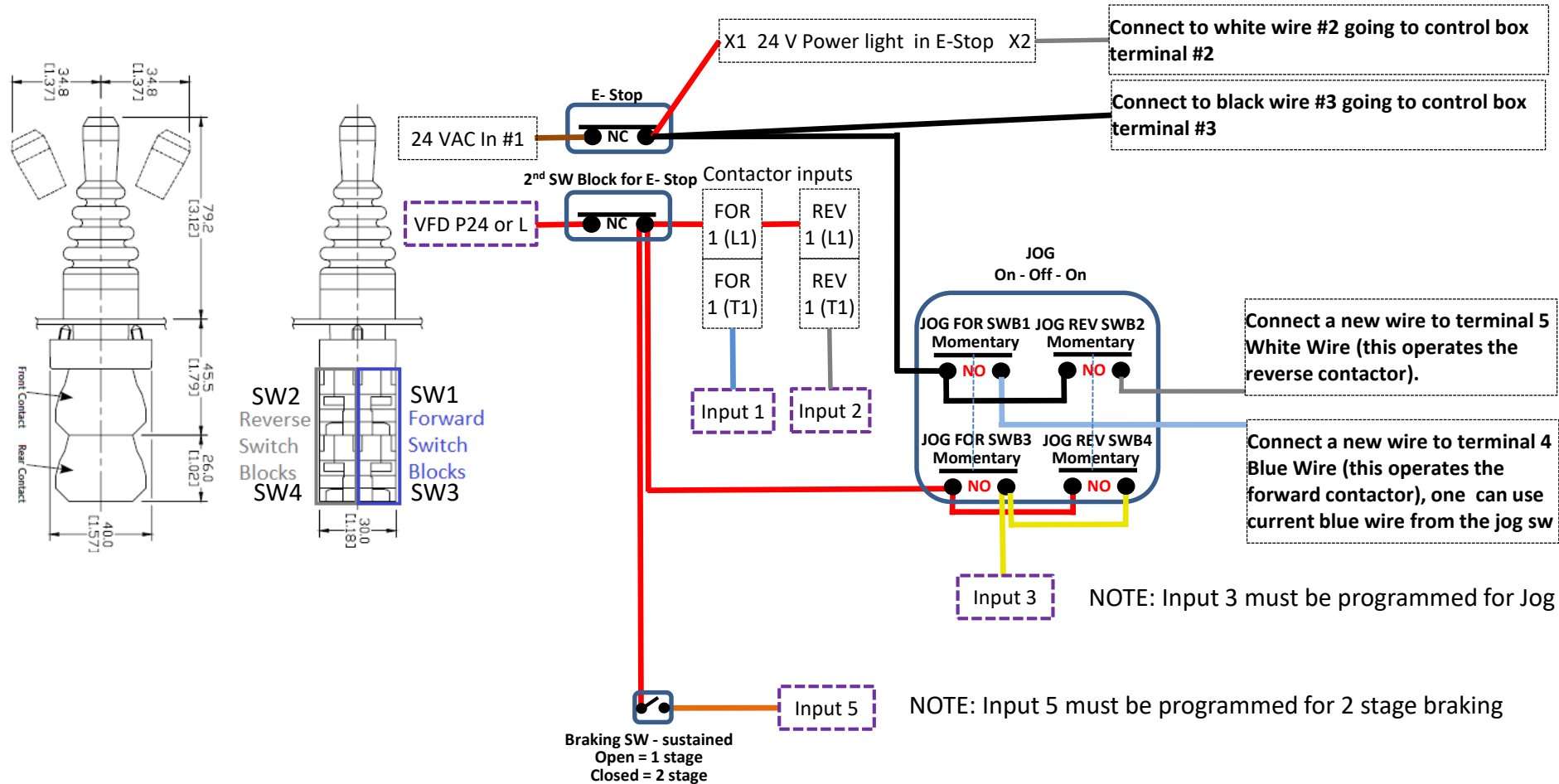
Two way Joystick Jog using For/Rev contactors for Hitachi WJ200

ECX Series 22mm Plastic Joystick ECX3510 and ECX1040-2

(two additional NO switch blocks). Total of 4 NO switch blocks.

Lighted E-Stop with TWO NC switch blocks (GCX1226-24L + ECX1030, AR22V0L-01E3R + AR9B291)

Optional: 1 and 2 Stage Braking



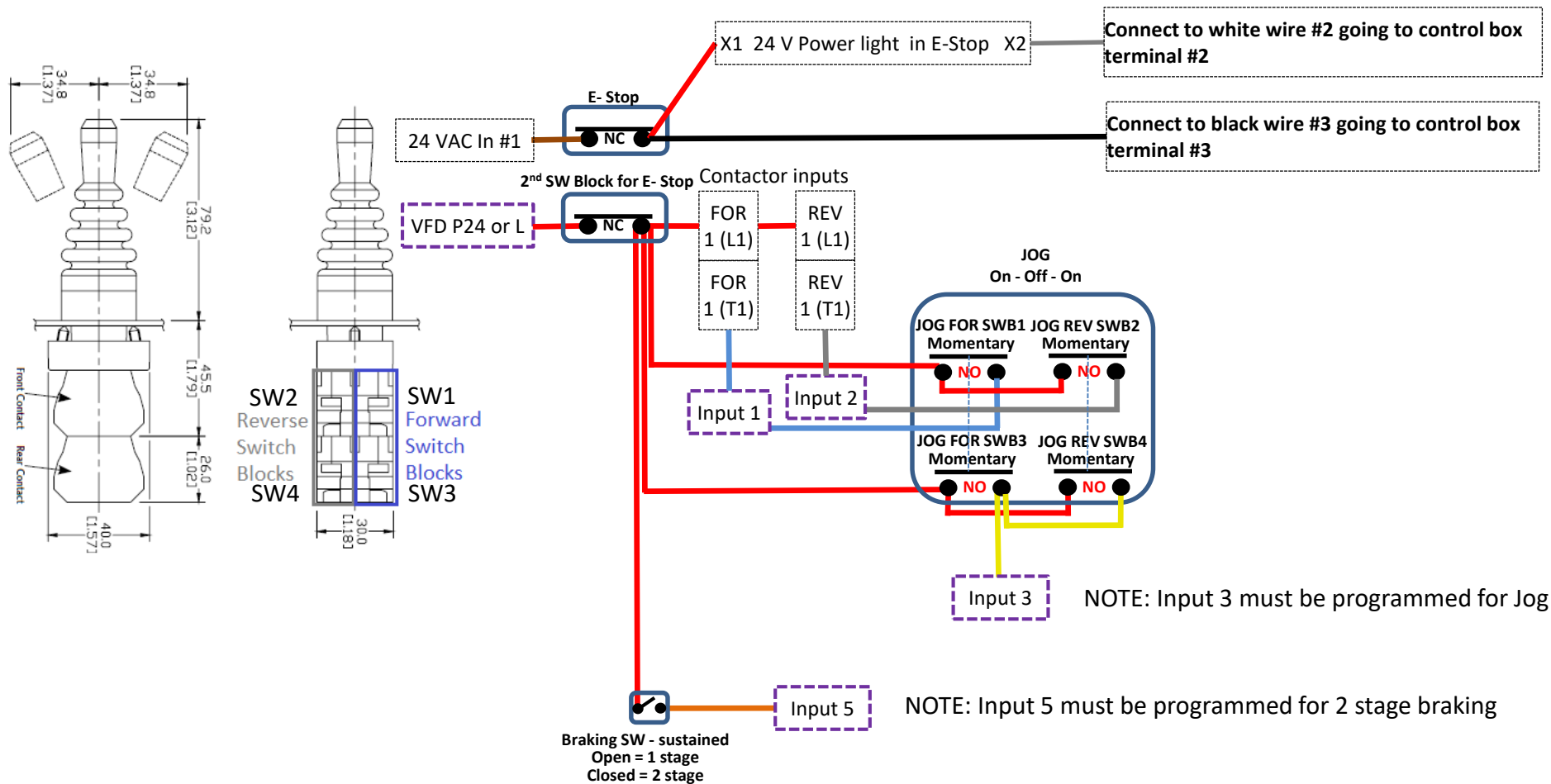
Two way Joystick Jog using For/Rev direct connect to VFD inputs for Hitachi WJ200

ECX Series 22mm Plastic Joystick ECX3510 and ECX1040-2

(two additional NO switch blocks). Total of 4 NO switch blocks.

Lighted E-Stop with TWO NC switch blocks (GCX1226-24L + ECX1030, AR22V0L-01E3R + AR9B291)

Optional: 1 and 2 Stage Braking



Two way Joystick Jog using For/Rev with diodes direct connect to VFD inputs for Hitachi WJ200

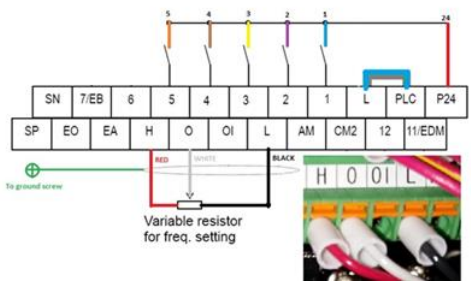
ECX Series 22mm Plastic Joystick ECX3510 *Total of 2 NO switch blocks.*

Lighted E-Stop with TWO NC switch blocks (GCX1226-24L + ECX1030, AR22V0L-01E3R + AR9B291)

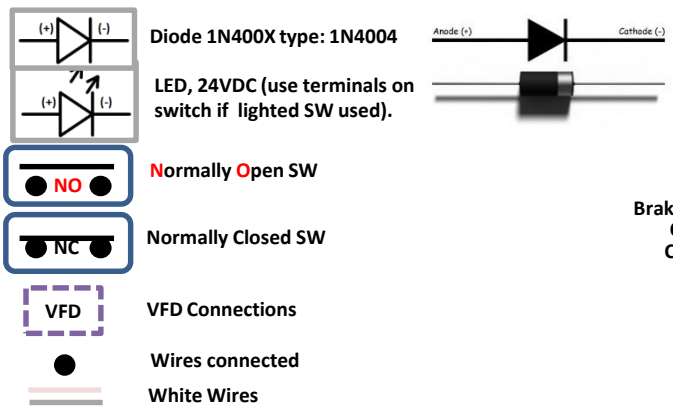
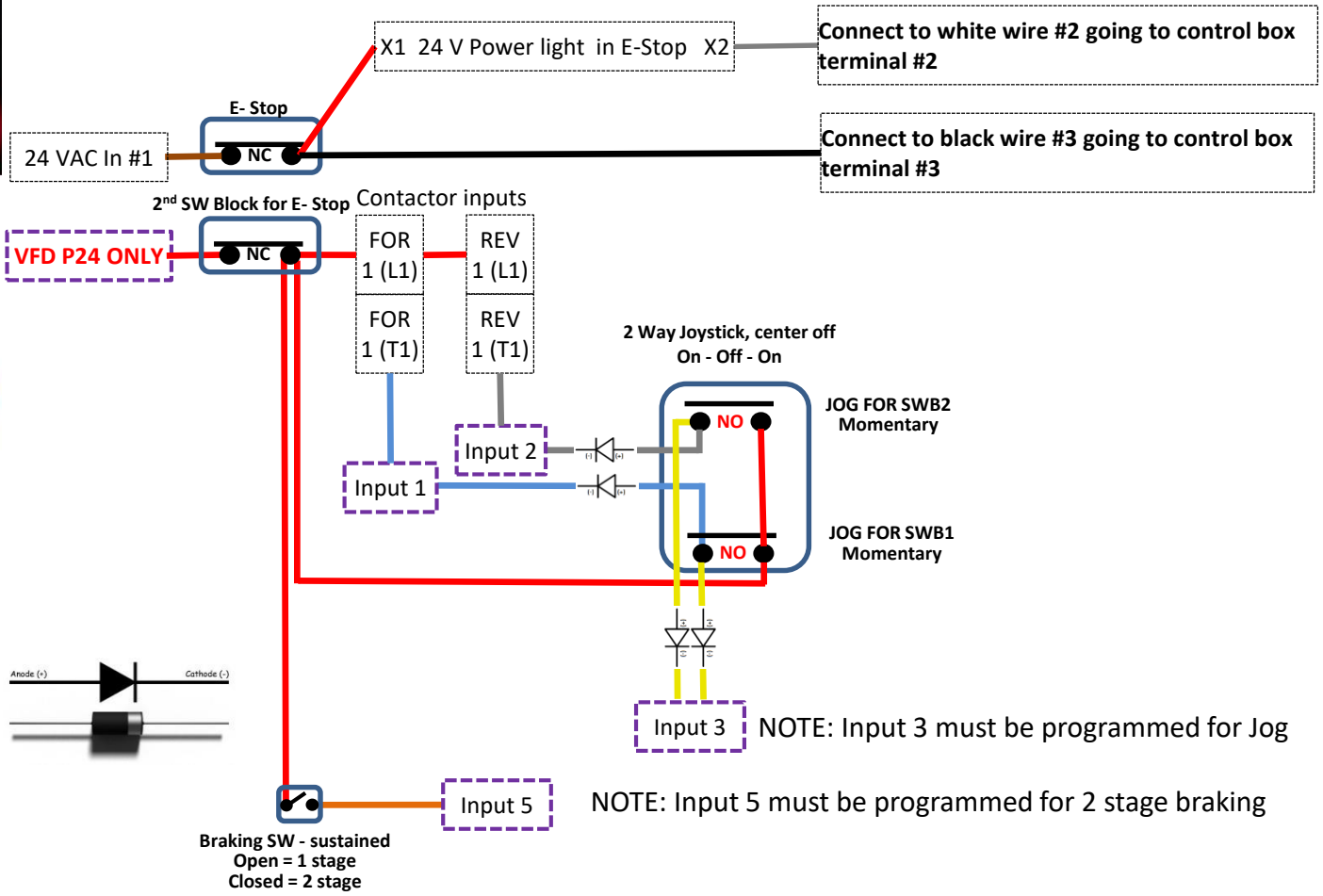
Optional: 1 and 2 Stage Braking



Wiring sample of control logic terminal (source logic)



VFD wired for Source Logic, jumper must be between L and PLC. P24 connected to E-Stop



NOTE: Input 3 must be programmed for Jog

NOTE: Input 5 must be programmed for 2 stage braking