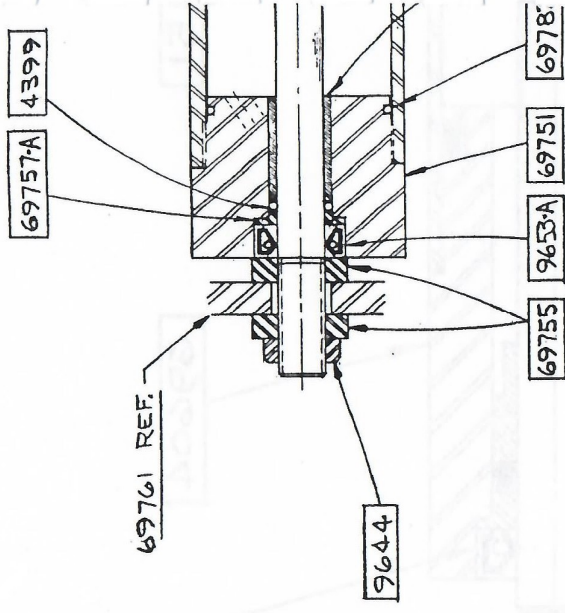
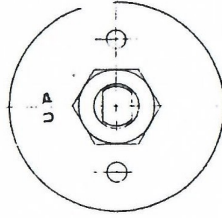


TO MOVE. CLOCKWISE	REMOVE FROM SHOULDER
1 DEGREE	.00009
2 DEGREES	.00017
5 DEGREES	.00043
10 DEGREES	.00087
15 DEGREES	.00130
20 DEGREES	.00174
30 DEGREES	.00260
45 DEGREES	.00391
60 DEGREES	.00521
90 DEGREES	.00781
120 DEGREES	.01042
135 DEGREES	.01177
180 DEGREES	.01563



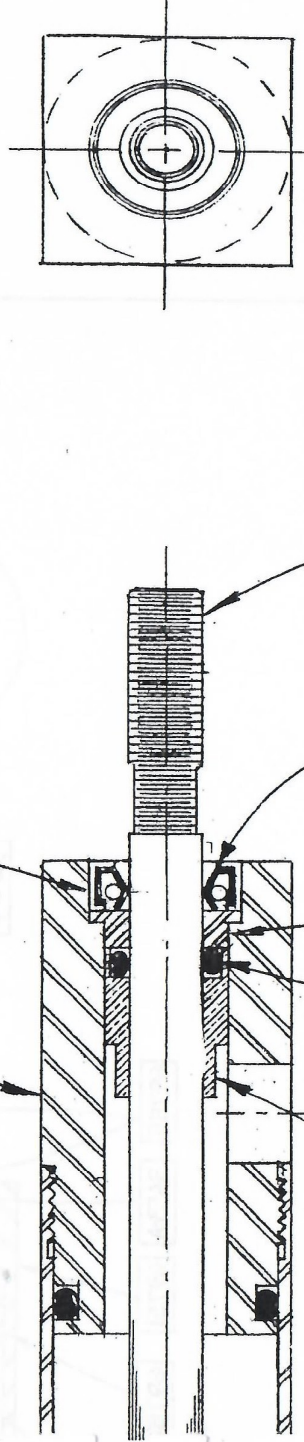
PART NO.	REQ.	DESCRIPTION
9644	1	3/8-24 HEX LOCK NUT
4399	1	1/8ID x 1/20D "O" RING
9650	1	5/16ID x 7/16OD "O" RING
70932-A	1	1 1/4 I.D. x 1 1/2 O.D. "O" RING
8509	1	FINISHED WASHER - 5/16 SCR
69782	2	1 7/8ID x 1/20D "O" RING
9653-A	1	#3669 OIL SEAL - "CHICAGO RAWHIDE"
70846	2	"O" RING BACKUP WASHER
69770	1	5/16-24 HEX JAM NUT
69758	1	CROSSFEED CYL. MOUNTING RING
69757A	1	SEAL BACKUP WASHER
69756	1	PISTON ROD BEARING
69755	2	PISTON ROD SHOULDER NUT
69754-B	1	PISTON
69753	1	PISTON ROD
69752	1	CYLINDER BODY
69751	1	FRONT CYLINDER END
69750	1	REAR CYLINDER END
PART NO.	REQ.	DESCRIPTION

QTY	DESCRIPTION	QTY	DESCRIPTION
2	EXPANDER	1	9/16" OD X 3/8" ID, 0" RING
2	STOP WASHER	1	1218 INT. LOCKWASHER
2	EXPANDER GUIDE		
1	PISTON GUIDE	2	PRF-902-17 "0" RING
1	PISTON ROD BEARING	1	3687 OIL SEAL "CH1"/RAW.
1	REAR CYLINDER END	1	5/16" 24 ELASTIC STOP NUT
1	FRONT CYLINDER END	1	"0" RING BACK-UP WASHER
1	PISTON ROD	2	EXPANDER SPRING
1	CYLINDER TUBE	2	PISTON CUPS

This technical drawing shows a cross-sectional view of a mechanical assembly. The base is a large rectangular block. In the center of the base, there is a dashed circle. On either side of this central dashed circle, there are two solid circles, each with a crosshair indicating its center. Above the base, there is a vertical component consisting of a rectangular block with a series of horizontal lines, suggesting a threaded or slotted structure, mounted on a small rectangular base.

15

69604



9553-A

4400 9561-A

9653-A

17152

[illegible]

HEAT TREAT.	FINISH	USED ON	NO. REQ.	TOLERANCE ON FRACTIONS ± 0.010 ON DECIMALS AS SHOWN
		6-12 CHALLENGER	1	

BOYAR-SCHULTZ CORPORATION
BROADVIEW, ILL.