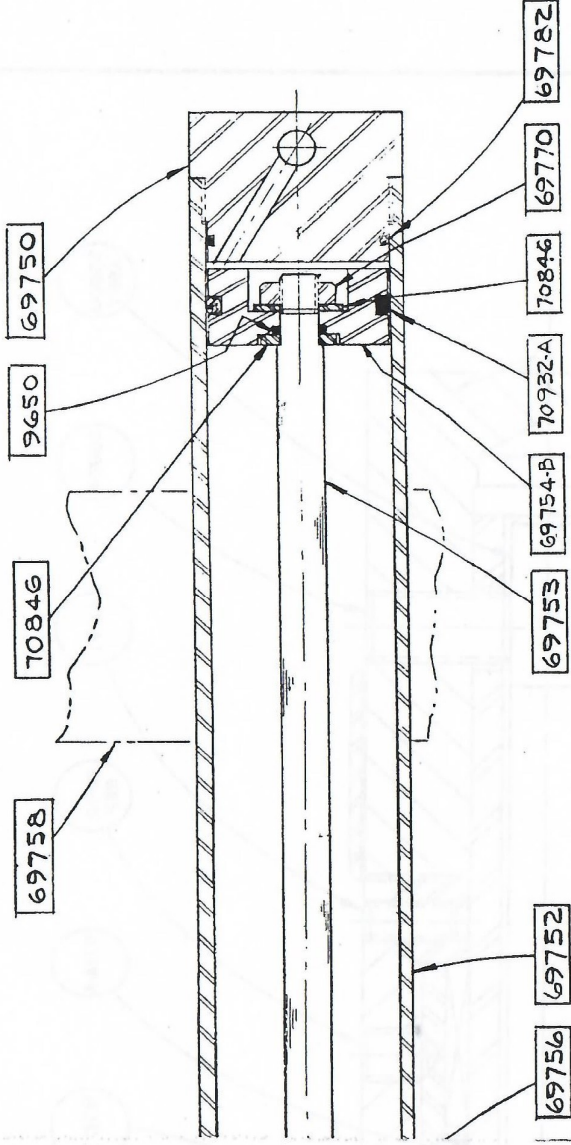
[illegible]

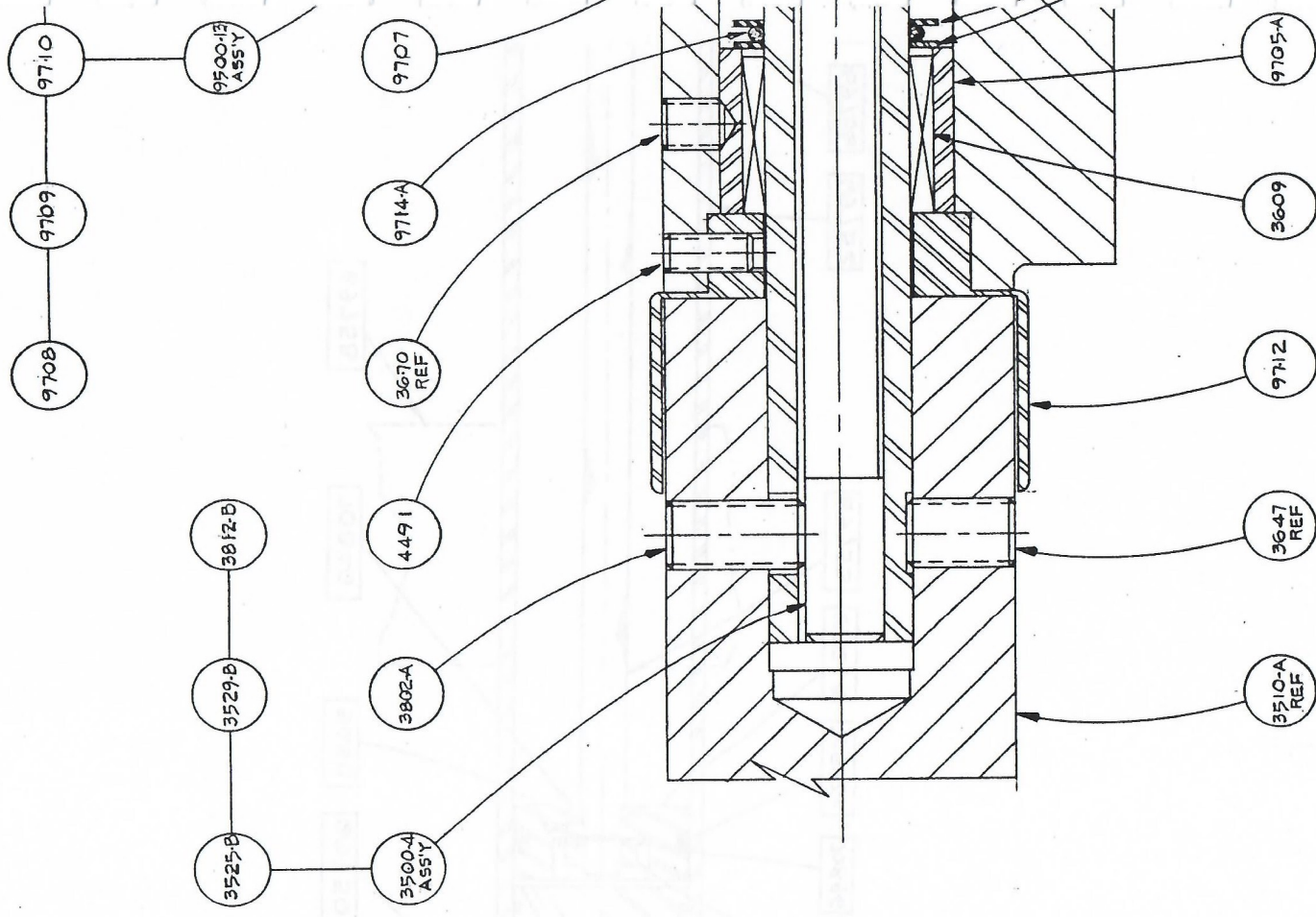


NOTE:
 END CAPS MUST BE ALIGNED
 "UP" MARKS MUST BE ON VERTICAL ϕ

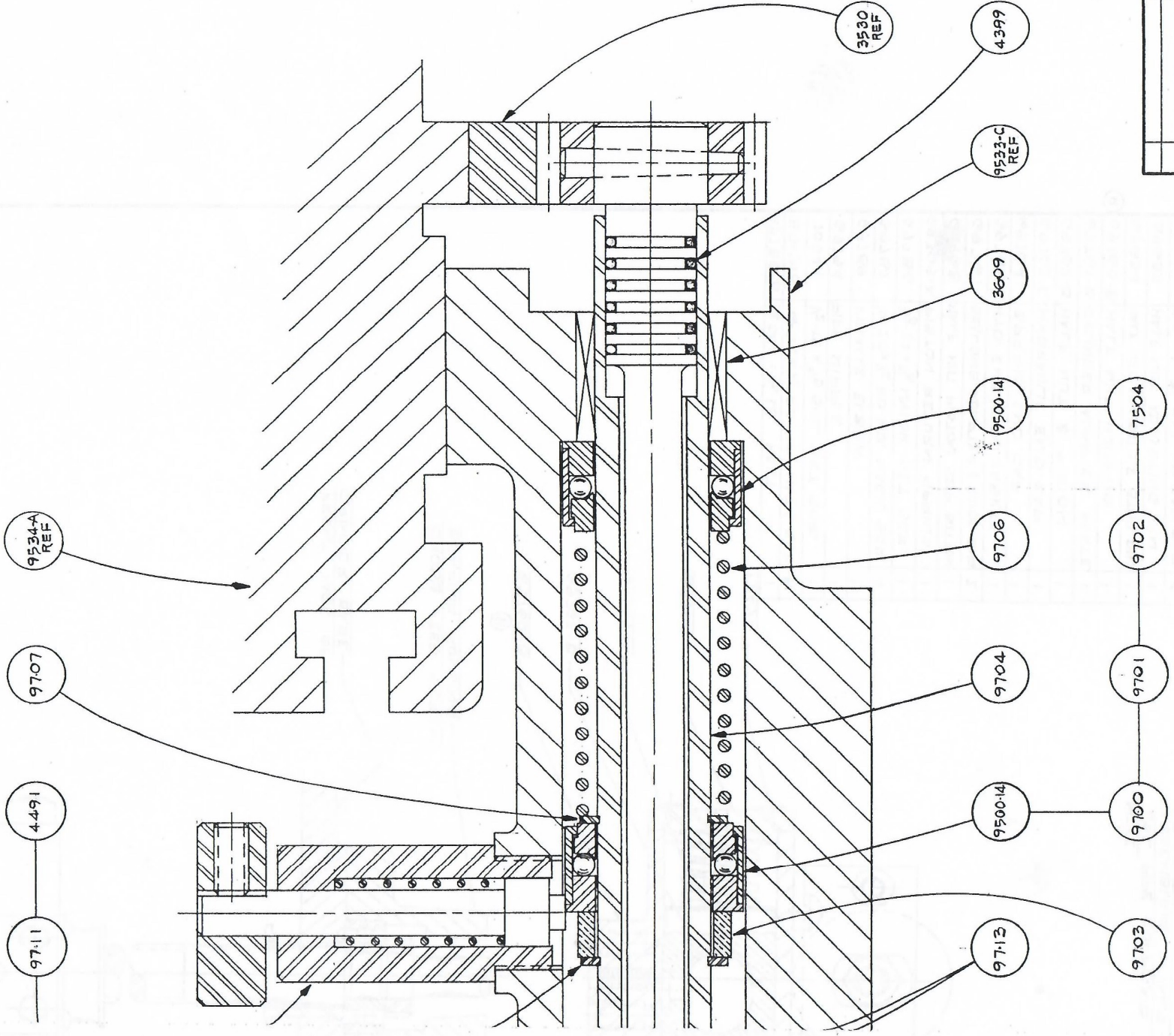
ISSUE	CHANGE	DATE	BY
PART NAME			
CROSSFEED CYLINDER			
DRAWN <u>BNP</u> 8-7-62			
CHECKED			
SCALE <u>Full</u> <u>SOF</u>			
BOYAR-SCHULTZ CORPORATION			
BROADVIEW, ILL.			

MATERIAL	HEAT TREAT	FINISH	USED ON G-12 G-13 G-14 G-15 G-16 G-17 G-18 G-19 G-20 G-21 G-22 G-23 G-24 G-25 G-26 G-27 G-28 G-29 G-30 G-31 G-32 G-33 G-34 G-35 G-36 G-37 G-38 G-39 G-40 G-41 G-42 G-43 G-44 G-45 G-46 G-47 G-48 G-49 G-50 G-51 G-52 G-53 G-54 G-55 G-56 G-57 G-58 G-59 G-60 G-61 G-62 G-63 G-64 G-65 G-66 G-67 G-68 G-69 G-70 G-71 G-72 G-73 G-74 G-75 G-76 G-77 G-78 G-79 G-80 G-81 G-82 G-83 G-84 G-85 G-86 G-87 G-88 G-89 G-90 G-91 G-92 G-93 G-94 G-95 G-96 G-97 G-98 G-99 G-100	NO. REQ. 1	TOLERANCE ON DECIMALS AS SHOWN
----------	------------	--------	---	---------------	--------------------------------------

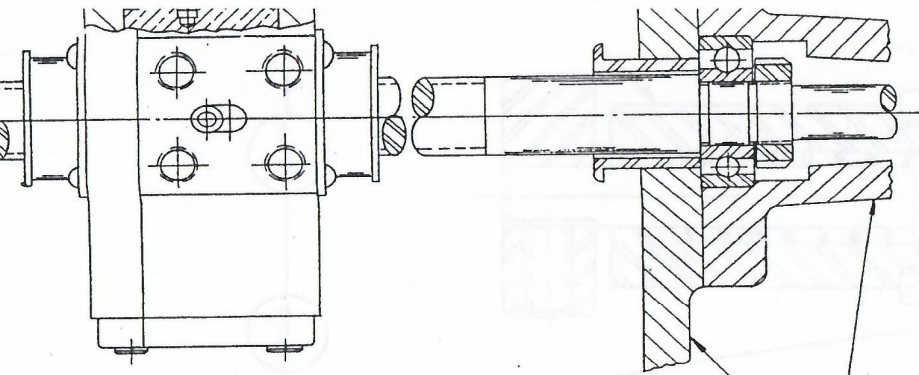
NOTE
TABLE DISENGAGE ASSEMBLY # 9500-13
IS SHOWN 90° OUT OF POSITION



9500-14-0007



TOLERANCE ON FRACTIONS .010 ON DECIMALS .005 UNLESS OTHERWISE SPECIFIED		NO. REQ.	USED ON	FINISH	HEAT TREAT.	MATERIAL
			HYD G-12			
			GRINDER			
SCALE		DOUBLE	S.O.F			
DRAWN NM		BOYAR-SCHULTZ CORPORATION				
CHECKED		BROADVIEW, ILL				
PART NAME		TABLE FEED ASSEMBLY				
DATE		9-19-68				
BY						
CHANGE						
ISSUE						



FRONT FACE OF
GRINDER BASE

CROSS FEED SCREW
BEARING HOUSING

(A)

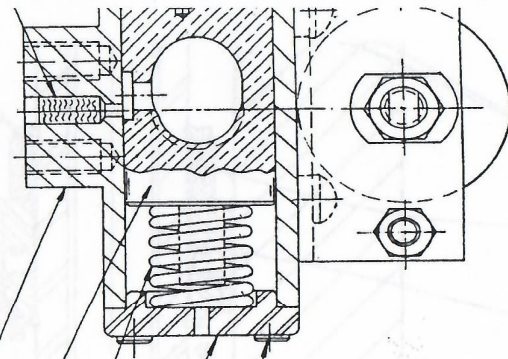
69760-B

69762-B

69769-A

69764

19292



PART NO.	DESCRIPTION	REQ
69788-B	1/4 DIA. x 1/2 LG. FELT	1
150-918	*G-32 x 1/4 RD. HD. MACH. SCR	8
70941	1/2-13 x 3/8 SOC. SET SCR.	1
69794	PIPE NIPPLE	1
69789	FEMALE ELBOW	1
69787	1/4-20 x 1/2 RD. HD. MACH. SCR.	4
69786	3/8-24 x 3/8 NYLOK SET SCR.	1
69769-A	PISTON RETURN SPRING	1
69768	HALF NUT PISTON STOP BUTTON	1
69767	BELLOWS ADAPTER & GUIDE RING	2
69765	HYD. END CAP GASKET	1
69764	SPRING END CAP	1
69763-A	HYDRAULIC END CAP	1
69762-B	HALF NUT & PISTON	1
69761-B	CYLINDER ADAPTER PLATE	1
69760-B	HALF NUT HOUSING	1
69634	HALF NUT ADJUSTABLE STOP PIN	1
69633	HALF NUT ADJUSTING PIN	1
19292	*10-32 x 3/8 SOC. HD. CAP SCR.	4
18156	*10-32 x 5/8 SOC. HD. CAP SCR.	4
9647	1/4-20 HEX. NUT	2
9632	1/4 SPRING LOCKWASHER	4
4403	1" I.D. x 1 1/4 O.D. "O" RING	1
4396	3/16 I.D. x 5/16 O.D. "O" RING	1
2875	1/4-20 x 1 3/4 SOC. SET SCR.	2

(A)

NOTE:
USE PIPE COMPOUND W/
ASSEMBLING DETAILS G