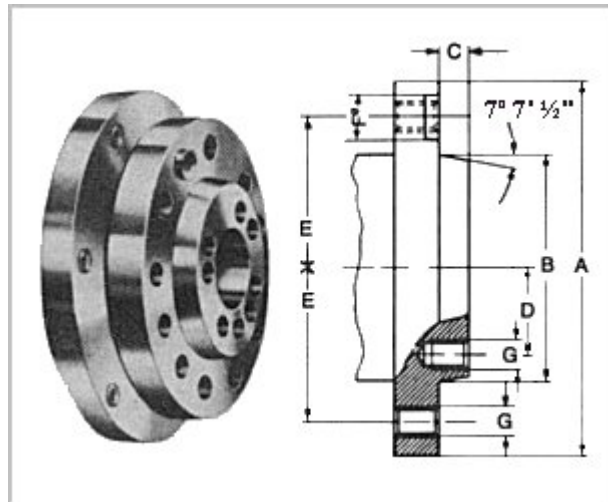


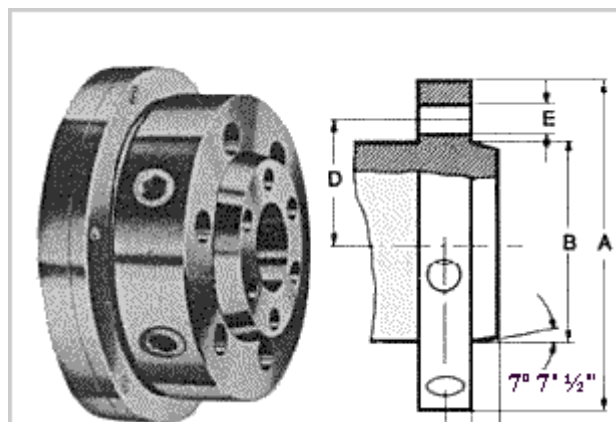
Specifications For American Lathe Spindle Noses

Spindle Type "A-1"



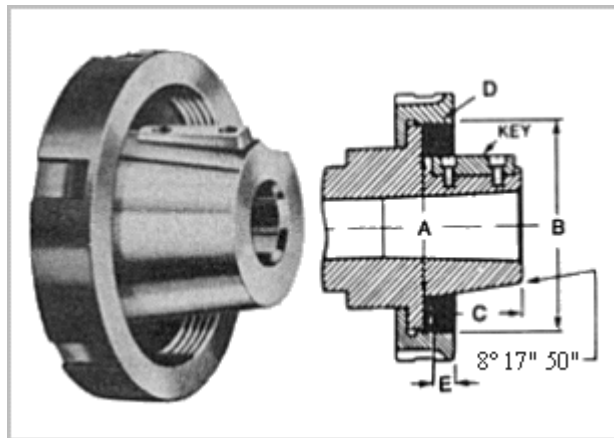
Size	A	B	C	D	E	F	NC-3
A1-5"	5-1/4	3.25050	.5625	1.2187	2.0625	.6525	7/16-14
A1-6"	6-1/2	4.18800	.6250	1.6250	2.6250	.7500	1/2-13
A1-8"	8-1/4	5.50075	.6875	2.1875	3.3750	.9375	5/8-11
A1-11"	11	7.75075	.7500	3.2500	4.6250	1.1250	3/4-10
A1-15"	15	11.2510	.8125	4.8750	6.5000	1.3750	7/8-9
A1-20"	20-1/2	16.2510	.8750	7.2500	9.1250	1.6250	1-8

Camlock Spindle Type "D-1"



Spindle Nose Size	A	B	C	D	E +0.002
D1-3"1	3-5/8	2.12500 +0.00025	7/16	1.3910 +0.002	0.59370
D1-4"1	4-5/8	2.50050 +0.0005	7/16	1.6250 +0.003	0.65620
D1-5"1	5-3/4	3.25050 +0.0005	1/2	2.0625 +0.003	0.78125
D1-6"1	7-1/8	4.18800 +0.0005	9/16	2.6250 +0.003	0.90625
D1-8"1	8-7/8	5.50075 +0.0005	5/8	3.3750 +0.003	1.03125
D1-11"	11-3/4	7.75075 +0.0005	11/16	4.6250 +0.006	1.21875

Long Taper Key Drive Type "L"



Spindle Nose Size	A +0.002	B	C	D	E	Key
LOO	2.750	3.745	2	6TPI	9/16	3/8 x 3/8 x 1-1/2
LO	3.250	4.496	2-3/8	6TPI	5/8	3/8 x 3/8 x 1-3/4
L1	4.125	5.996	2-7/8	6TPI	3/4	5/8 x 5/8 x 2-3/8
L2	5.250	7.745	3-3/8	5TPI	1	3/4 x 3/4 x 2-7/8
L3	6.500	10.370	3-7/8	4TPI	1-1/8	1 x 1 x 3-1/4