

PRODUCT INFORMATION PACKET

marathon®
Motors

Model No: 182THTY7726
Catalog No: Y541A
3,1800,TENV,182TC,3/60/230/460
1000:1 Speed Ratio



Regal and Marathon are trademarks of Regal Beloit Corporation or one of its affiliated companies.
©2019 Regal Beloit Corporation, All Rights Reserved. MC017097E

REGAL

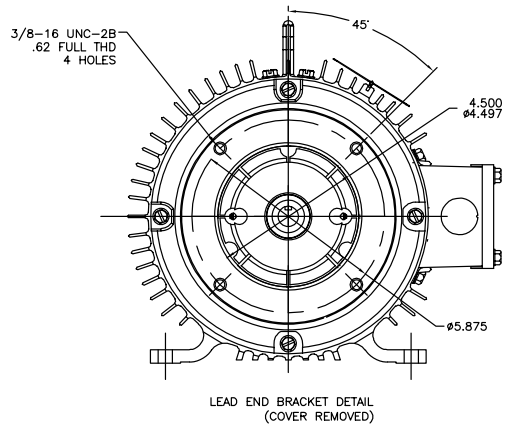
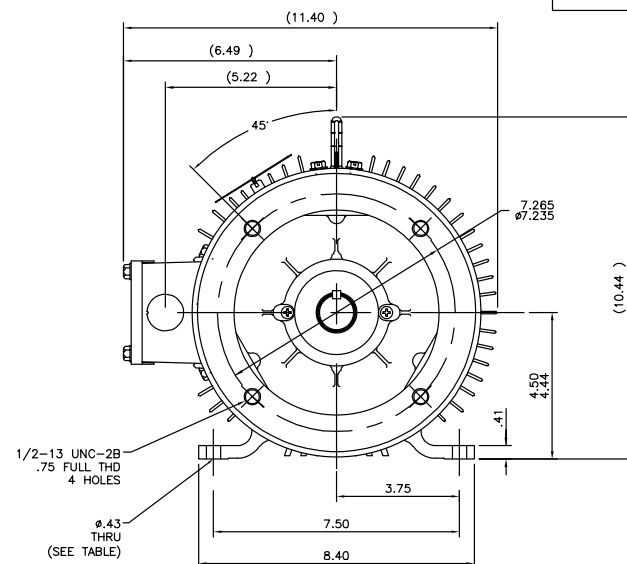
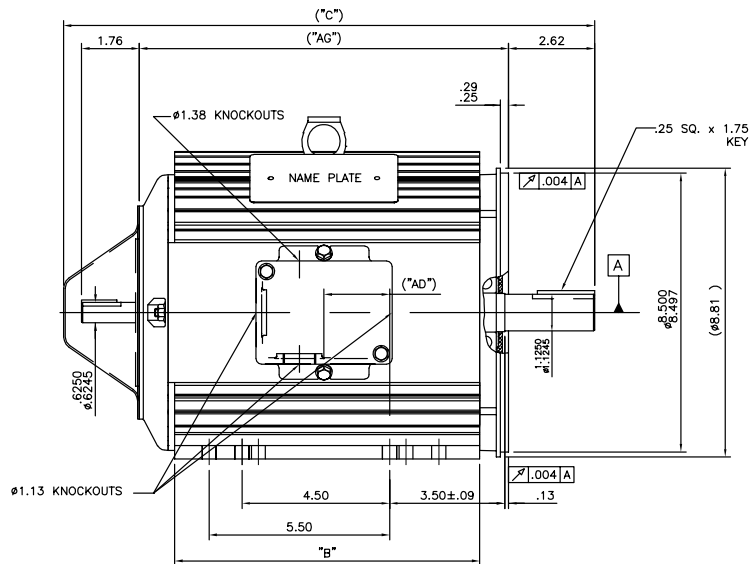


Nameplate Specifications

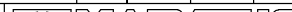
Output HP	3 HP	Output KW	2.2 kW
Frequency	60 Hz	Voltage	230/460 V
Current	8.2/4.1 A	Speed	1755 RPM
Service Factor	1	Phase	3
Efficiency	87.5 %	Duty	Continuous
Insulation Class	F	Design Code	INV
KVA Code	N	Frame	182TC
Enclosure	Totally Enclosed Non Ventilated	Overload Protector	No
Ambient Temperature	40 °C	Drive End Bearing Size	6207
Opp Drive End Bearing Size	6206	UL	Recognized
CSA	Y	CE	Y
IP Code	43		

Technical Specifications

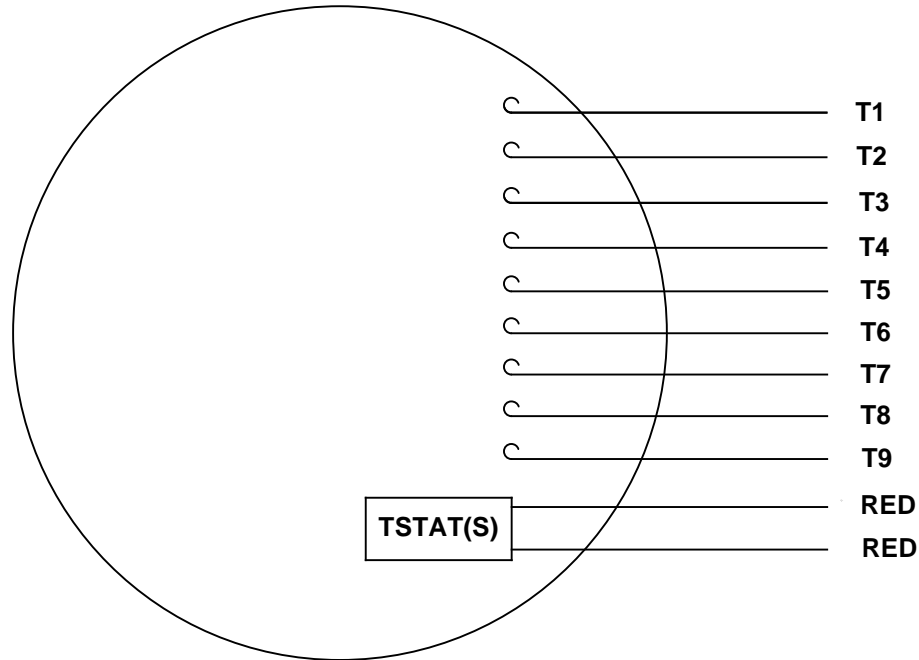
Electrical Type	Squirrel Cage Inverter Duty	Starting Method	Inverter Only
Poles	4	Rotation	Reversible
Mounting	Rigid Base	Motor Orientation	Horizontal
Drive End Bearing	Ball	Opp Drive End Bearing	Ball
Frame Material	Aluminum	Shaft Type	T
Overall Length	16.19 in	Frame Length	9.50 in
Shaft Diameter	1.125 in	Shaft Extension	2.62 in
Assembly/Box Mounting	F1/F2 Capable		
Outline Drawing	036119ME-950	Connection Diagram	005010.20ME



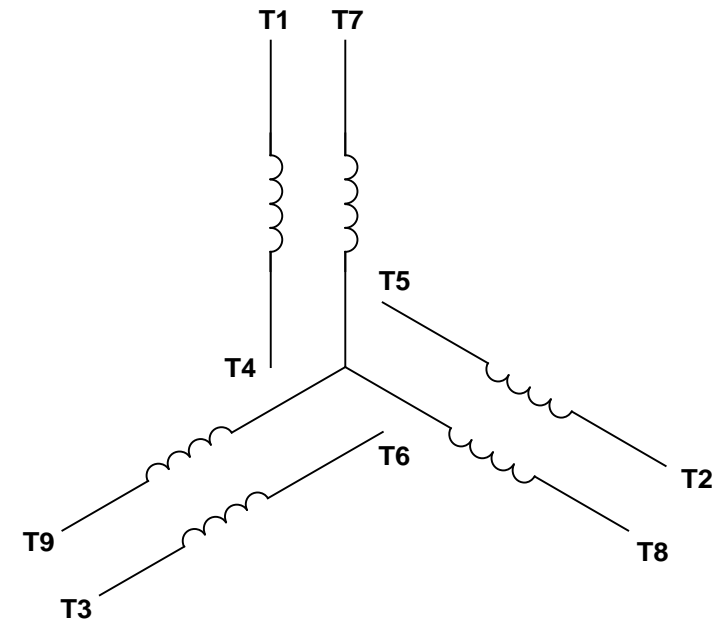
950	16.19	2.00	9.3	11.26	12
DASH NO	"C"	"AD"	"B"	"AG"	FOOT HOLES

				TOLERANCES UNLESS SPECIFIED DEC. INCHES				DRAWN PWR 02/03/11	
				.X ±.1				CHK ST 02/03/11	
				.XX ±.03		TITLE 182/184T-RIGID-TENV-C FACE OUTLINE		APPD	
				.XXX ±.005				SCALE 3=B	
				.XXXX ±.0005		MAT'L BRAKE/ENCODER PROVISION		REF 035977ME	
NO.		REVISION		BY & DATE		CHK ANG ±1/2°		FINISH	
THIS DRAWING IN DESIGN AND DETAIL IS OUR PROPERTY AND MUST NOT BE USED EXCEPT IN CONNECTION WITH OUR WORK ALL RIGHTS OF DESIGN AND INVENTION ARE RESERVED THIS IS AN ELECTRONICALLY GENERATED DOCUMENT - DO NOT SCALE THIS PRINT				RFP		CAD FILE 036119ME		SIZE	
				DIST				DRAWING NO. B 036119ME	

VIEW FROM OUTSIDE OF MOTOR AT SWITCH END.



LINE LEADS



VOLTAGE	L1	L2	L3	JOIN & INSULATE
HIGH	T1	T2	T3	(T4, T7) (T5, T8) (T6, T9)
LOW	T1, T7	T2, T8	T3, T9	T4, T5, T6

RBC PROPRIETARY AND CONFIDENTIAL INFORMATION
This document is the property of REGAL BELOIT CORPORATION ("RBC") including its subsidiaries and divisions and contains proprietary information of RBC. This document is loaned on the express condition that neither it nor the information contained therein shall be disclosed to others without the express written consent of RBC, and that the information shall be used by the recipient only as approved expressly by RBC. This document shall be returned to RBC upon its request. This document may be subject to certain restrictions under U.S. export control laws and regulations.

				TOLERANCES UNLESS SPECIFIED			DRAWN RDW 04/13/04	
				DEC	INCHES		CHK	
				.X	±.1		APPR	
				.XX	±.01		SCALE	1:1
				.XXX	±.005		REF	
--	REDRAWN IN SOLIDWORKS	VJB 02/08/11		.XXXX	±.0005	TITLE EXTERNAL WIRING DIAGRAM 3 PHASE		FMF 129027
NO	REVISION	BY & DATE	CHK	ANG	±1/2°	FINISH		PAGE OF
THIRD ANGLE PROJECTION				RFP	PREV	SIZE	DRAWING NO	
				NETWORK FILE NAME 00501020ME		A	005010-20ME	
							REV	--

CERTIFICATION DATA SHEET

Model#:

182THTY7726 AA

WINDING#:

T84180 NONE 3

CONN. DIAGRAM:

005010.20ME

ASSEMBLY:

F1/F2 CAPABLE

OUTLINE:

036119ME-950

TYPICAL MOTOR PERFORMANCE DATA

HP		KW	SYNC. RPM	F.L. RPM	FRAME	ENCLOSURE	KVA CODE	DESIGN					
3		2.24	1800	1755	182TC	TENV	N	INV					
PH	Hz	VOLTS	FL AMPS	START TYPE	DUTY	INSL	S.F	AMB°C	ELEVATION				
3	60	230/460	8.2/4.1	INVERTER ONLY	CONTINUOUS	F4	1.0	40	3300				
FULL LOAD EFF: 87.5		3/4 LOAD EFF: 84		1/2 LOAD EFF: 82.5		GTD. EFF		ELEC. TYPE		NO LOAD AMPS			
FULL LOAD PF: 78.5		3/4 LOAD PF: 73		1/2 LOAD PF: 61		87.5		SQ CAGE INV DUTY		4.6 / 2.3			
F.L. TORQUE		LOCKED ROTOR AMPS		L.R. TORQUE		B.D. TORQUE		F.L. RISE°C					
9 LB-FT		92 / 46		34 LB-FT 378		49.3 LB-FT 548		75					
SOUND PRESSURE @ 3 FT.		SOUND POWER		ROTOR WK^2		MAX. WK^2		SAFE STALL TIME		STARTS /HOUR		APPROX. MOTOR WGT	
62 dBA		72 dBA		0.42 LB-FT^2		0 LB-FT^2		0 SEC.		0		77 LBS.	

EQUIVALENT WYE CKT.PARAMETERS (OHMS PER PHASE)

R1	R2	X1	X2	XM
1.578	1.802	2.838	2.091	94.13
RM	ZREF	XR	TD	TD0
0	1	0	0	0

*** SUPPLEMENTAL INFORMATION ***

DE BRACKET TYPE	ODE BRACKET TYPE	MOUNT TYPE	ORIENTATION	SEVERE DUTY	HAZARDOUS LOCATION	DRIIP COVER	SCREENS	PAINT
C-FACE	BRAKE OR ENCODER	RIGID	HORIZONTAL	FALSE	NONE	FALSE	NONE	BLACK (ENAMEL)
BEARINGS		GREASE		SHAFT TYPE	SPECIAL DE	SPECIAL ODE	SHAFT MATERIAL	FRAME MATERIAL
DE	OPE							
BALL	BALL	POL YREX EM		T	NONE	NONE	1144 STRESSPROOF (C-223)	ALUMINIUM
6207	6206							

THERMO-PROTECTORS				THERMISTORS		CONTROL		SPACE /n HEATERS	
THERMOSTATS		PROTECTORS	WDG RTDs	BRG RTDs					
TSTATS (INC)		NOT	NONE	NONE	NONE	FALSE	NONE VOLTS		

If Inverter equals NONE, contact factory for further Information

* N		INVERTER TORQUE: CONSTANT 1000.1	
O		INV. HP SPEED RANGE: 2.0 X BASE SPEED	
T		ENCODER: PROVISIONS ONLY	
E		NONE NONE	
S		NONE NONE PPR	
*		BRAKE: PROVISIONS ONLY NONE	

NONE	P/N	NONE	
NONE		NONE	
NONE FT-LB		NONE V	NONE HZ

DATE: 06/27/2017 01:23:23 AM

FORM 3531 REV.3 02/07/99

** Subject to change without notice.

Data Sheet

Date: 1/4/2019

Customer:

Attention:

Submitted by:

FAREEDA DUDEKULA

182THTY7726

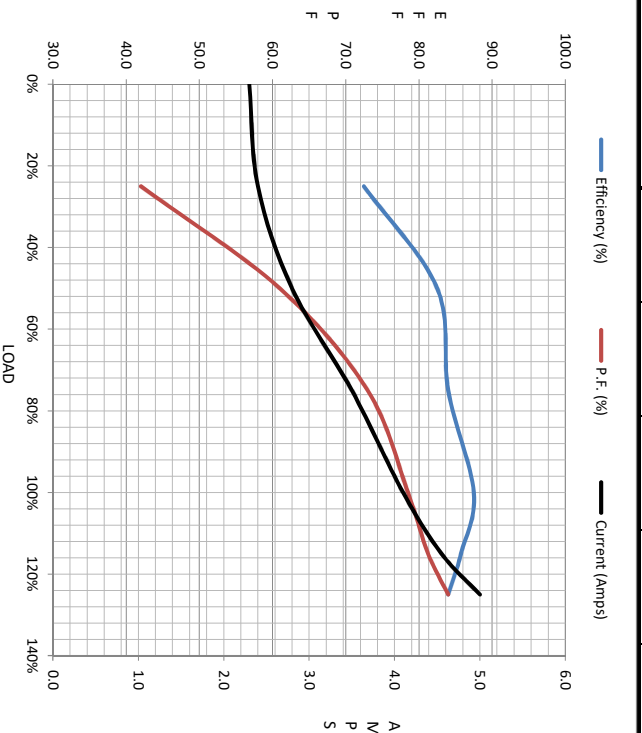
Submittal

Data @ 460 V

Motor Load Data								
	0%	25%	50%	75%	100%	115%	125%	LR
Load								
Current (amps)	2.30	2.40	2.80	3.5	4.1	4.6	5.0	46.0
Torque (ft-lb)	0.00	2.20	4.4	6.7	9.0	10.2	11.3	34.0
RPM	1800	1790	1780	1765	1755	1745		0
Efficiency (%)		72.5	82.5	84.0	87.5	86.8	84.0	
P.F. (%)	10.5	42.0	61.0	73.0	78.5	81.3	84.0	60.5

Motor Speed Data

	LR	Pull-Up	BD	Rated	Idle	Information Block
Speed (RPM)	0	130	1318	1755	1800	
Current (Amps)	46.0	46.9	31.8	4.1	2.30	
Torque (ft-lb)	34.0	34.0	49.3	9.0	0.00	
					Sync. RPM	
					HP	1800
						3.0



Information Block				
HP	3.0			
Sync. RPM	1800			
Frame	182			
Enclosure	TENV			
Construction	TTL			
Voltage	230/460 V			
Frequency	60 Hz			
Design	INV			
LR Code letter	N			
Service Factor	1.15			
Temp Rise @ FL	75 °C			
Duty	CONT			
Ambient	40 °C			
Elevation	3,300 feet			
Rotor/Shaft wk²	0.42 Lb-Ft²			
Ref Wdg	T84180 NONE			
Sound Pressure @ 1M	62 dBA			
VFD Rating	CONSTANT 1000:1			
Outline Dwg	036119ME-950			
Conn. Diag	005010.20ME			
Additional Specifications:				
0				
0				
EQUIV CKT (OHMS / PHASE)				
R1	R2	X1	X2	Xm
1.5/780	1.8020	2.8380	2.0910	94.1300

Speed -Torque Curve

