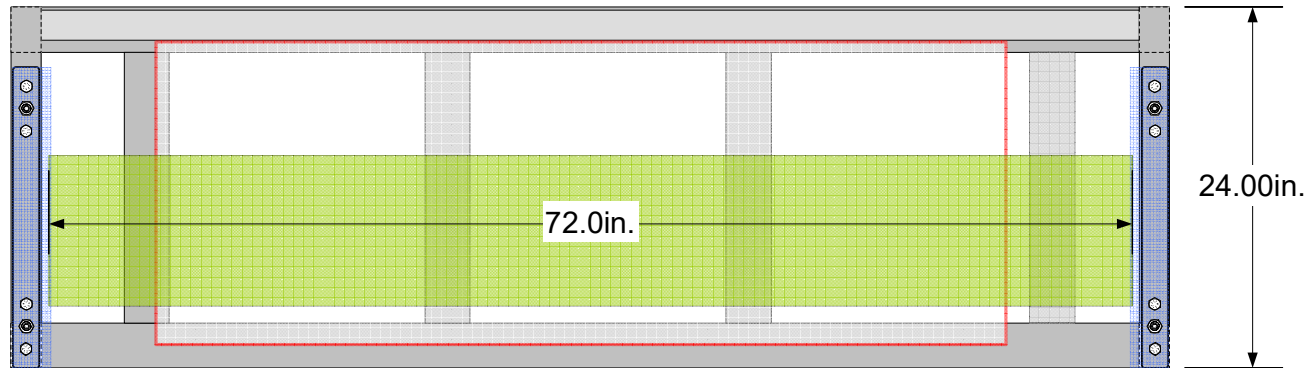


Note: All dimensions are approximate & in millimeters.

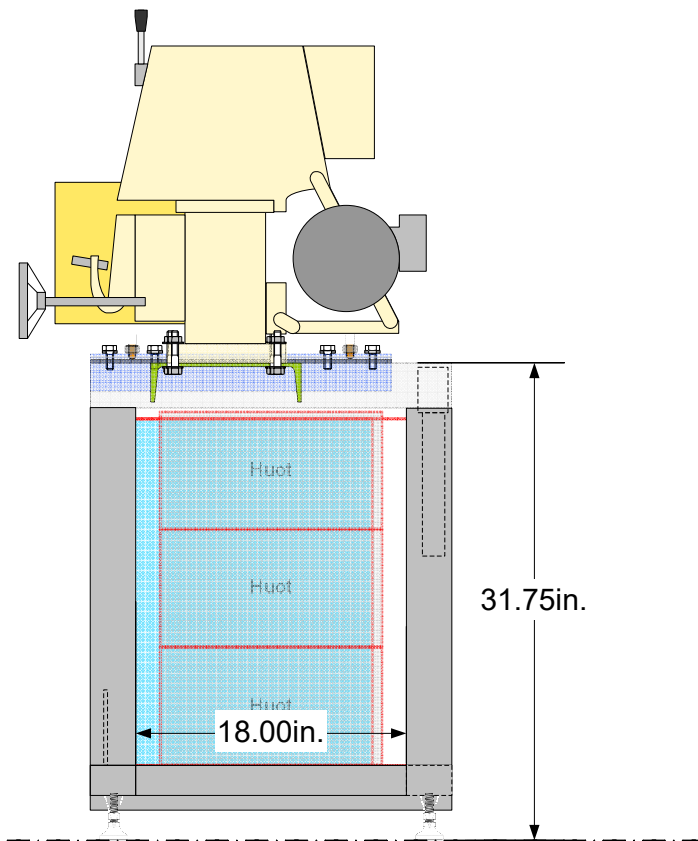
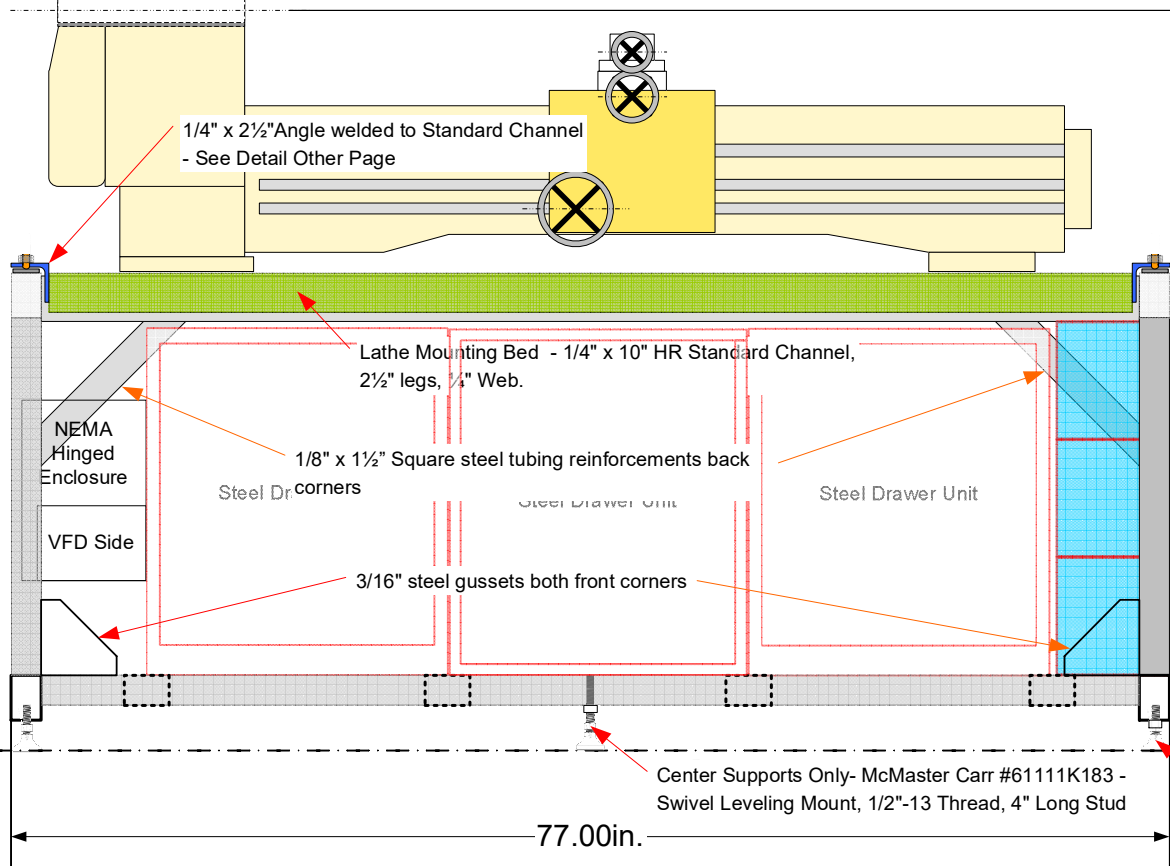
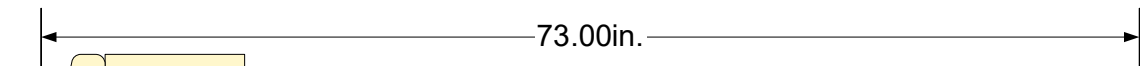
PM1340 Metal Lathe  
The Best & Jacobs Full Custom Edition

Best Services - Bespoke Wood & Metal  
David P. Best, designer

June 2017  
Rev 1



All stand components 2 x 3 x 1/8" rectangular hot-rolled steel w welded joints unless otherwise noted



Leveling Feet at corners - see other drawing for details.

PM1340 Metal Lathe The Best & Jacobs Full Custom Edition	
Best Services - Bespoke Wood & Metal David P. Best, designer	June 2017 Rev 1

1/2"-20 Hex-bolts

Leveling Set Screws  
McMaster Carr #92765A647 -  
Easy-Adjust Oval Point Set  
Screw, Alloy Steel, 1/2"-20  
Thread, 3/4" Long

McMaster Carr #90521A236 -  
Grade 2H Steel Extra-Wide  
Hex Nut 1/2"-20 Thread Size,  
7/8" Wide, 31/64" High Welded  
to Base

1/2"-20 oversized nut  
welded to Angle for  
set screw

1/2"-20 Hex-bolt

1/2"-20 Hex-socket set screw for  
leveling - all 4 corners

2.25" x 1/4" Angle

Welded Joint

1/4" CR Plate welded to leg  
drilled/tapped for 1/2"-20 securing  
Hex-bolts in 8 locations

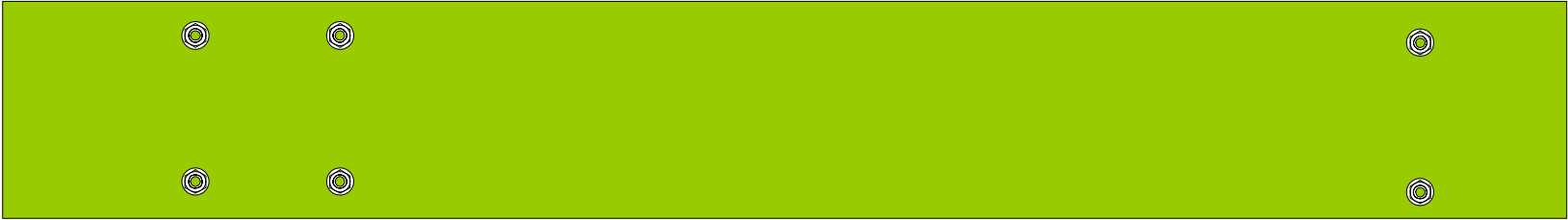
10" x 1/4" HR Channel -  
Lathe bolted to this platform

Leveling Feet - Both Ends -  
McMaster Carr #61111K167 -  
Swivel Leveling Mount, 1/2"-20  
Thread, 2" Long Bolt, 4000 lb Load

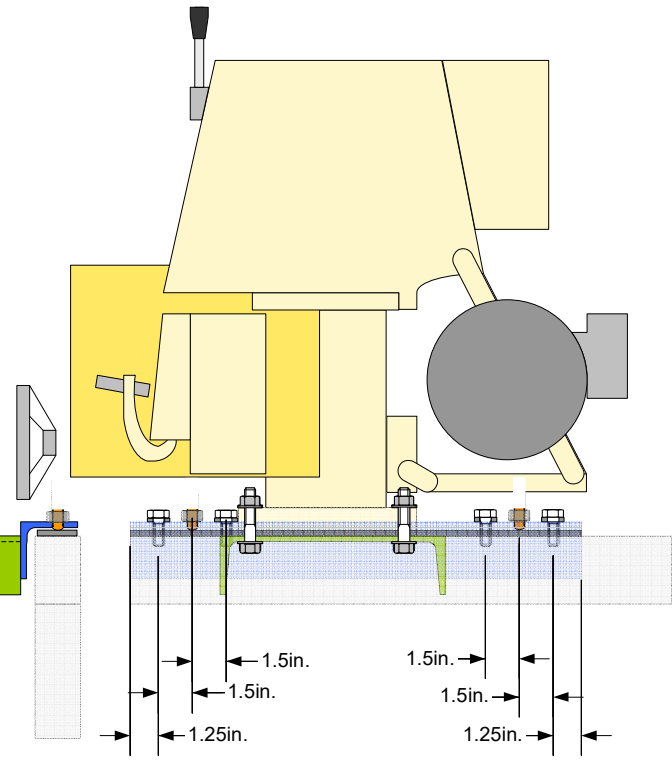
## Lathe Stand Leveling Details

PM1340 Metal Lathe  
The Best & Jacobs Full Custom Edition  
Best Services - Bespoke Wood & Metal  
David P. Best, designer

June 2017  
Rev 1



Lathe Mounting Fasteners - Grade 5 Steel  
Serrated Flange-Head Cap Screw, 1/2"-13 Thread,  
2-1/2" Long & Flange-Head Hex Nuts



Lathe Mounting Details

PM1340 Metal Lathe The Best & Jacobs Full Custom Edition	
Best Services - Bespoke Wood & Metal David P. Best, designer	June 2017 Rev 1

