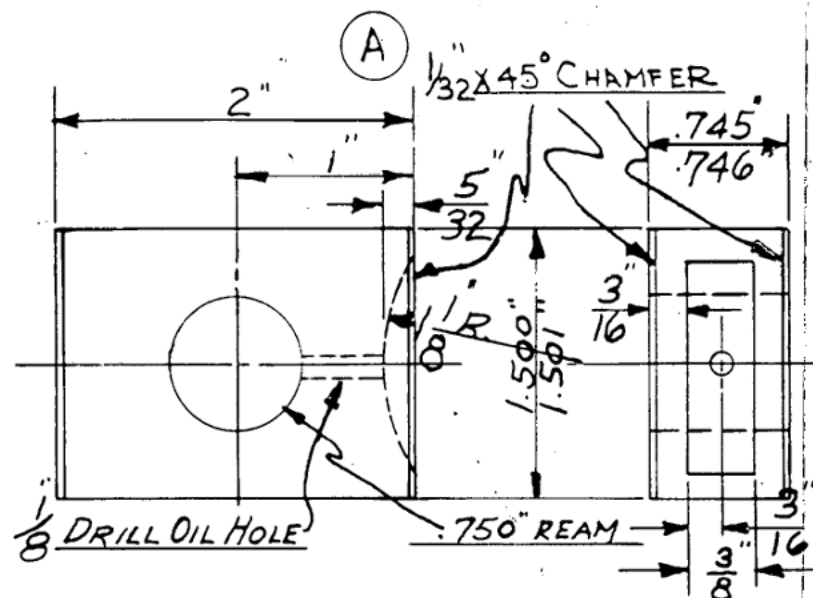


Unless Otherwise Specified—Fractional Dim. -- OR -- .005" —Remove Burrs and Sharp Corners. Finish:—f1 1/32": f2 1/16": f3 3/32": f4 1/8"



		Turned 1/32" x 45° chamfer				
2611		1st oil groove, Mach. #62. Sac. 1st open belt.		2		
2667		Oil 1/8" oil hole Atlas		3		
218		using both sides 180 at once. Mach. #401.		4		
Study No.	PCS.	DESCRIPTION	Opr. No.	RATE	SET UP	
8-14-41	A	Chamfer Added	HDM			
DATE	SYM.	WAS	Auth. by	DATE	SYM.	WAS



ATLAS PRESS CO.  
KALAMAZOO, MICH.

## CRANK PIN BLOCK

USED ON — — S78

MAT'L.— Oilite  
H.T.—

REQ'D.—	WT.—
---------	------

DR. B<sup>y</sup>—W. B.

CK. By—

DATE— 7-26-37

SCALE— FULL

S7-19